

# The Big John Premium



P 1300 788 778 • F 1300 788 878  
E [info@rba.com.au](mailto:info@rba.com.au) • W [www.rba.com.au](http://www.rba.com.au)



**MADE IN THE U.S.A.**

RBA8186-853 02/20

## Installation Instructions

 **MADE IN THE U.S.A.**

[www.rba.com.au](http://www.rba.com.au)

# 9 Easy Step-by-Step Instructions for Installing the Big John Premium Toilet Seat

## Step 1



Screw flanges all the way up so that there are no threads showing

## Step 2



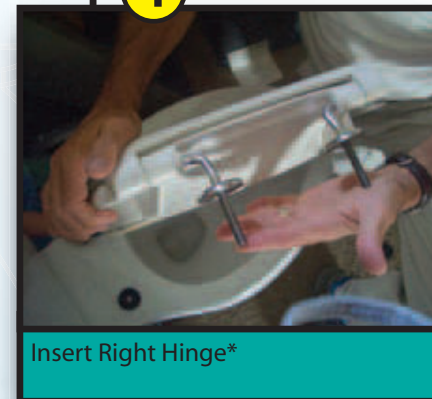
Hinges are marked right and left

## Step 3



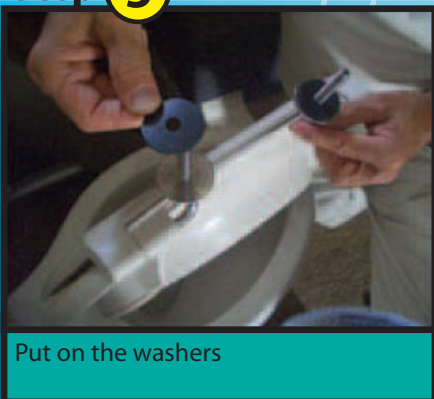
Insert the Left Hinge through the seat and lid on the Left side\*

## Step 4



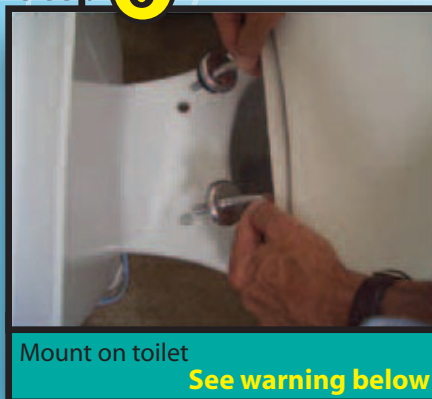
Insert Right Hinge\*

## Step 5



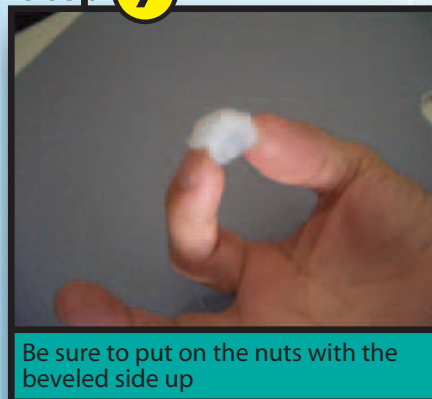
Put on the washers

## Step 6



Mount on toilet  
**See warning below**

## Step 7



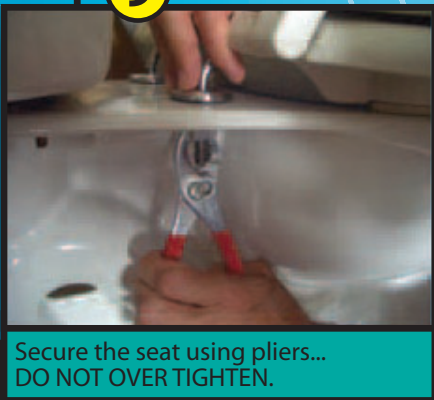
Be sure to put on the nuts with the beveled side up

## Step 8



Finger tighten the nuts...make sure that the seat is mounted properly

## Step 9



Secure the seat using pliers...  
**DO NOT OVER TIGHTEN.**

NOTE: Suitable for toilets with seat fixing centres of 130 - 140mm.

\*Left / Right Hinges - Refers to the left and right mounting holes on the toilet when facing it.

\*Note: Because of the size of this injection moulded seat & lid, from time to time there may be formlines evident.



**WARNING: ADJUST FLANGES SO THE BUMPERS SIT FLAT ON THE TOILET BEFORE TIGHTENING NUTS. Cracking or breaking around the hinges is a result of improper installation and IS NOT covered by the warranty.**

  
www.rba.com.au