

# INSTALLATION, OPERATION AND MAINTENANCE INSTRUCTIONS



**RBA8910-500 Series**

Sensor & Push Button Operated Outdoor Bottle Filler



Model	Outdoor Bottle Filler Pedestal Mounted
Date	17/06/14

Supersedes all previous

# INSTALLATION, OPERATION AND MAINTENANCE INSTRUCTIONS

## Note to Installer

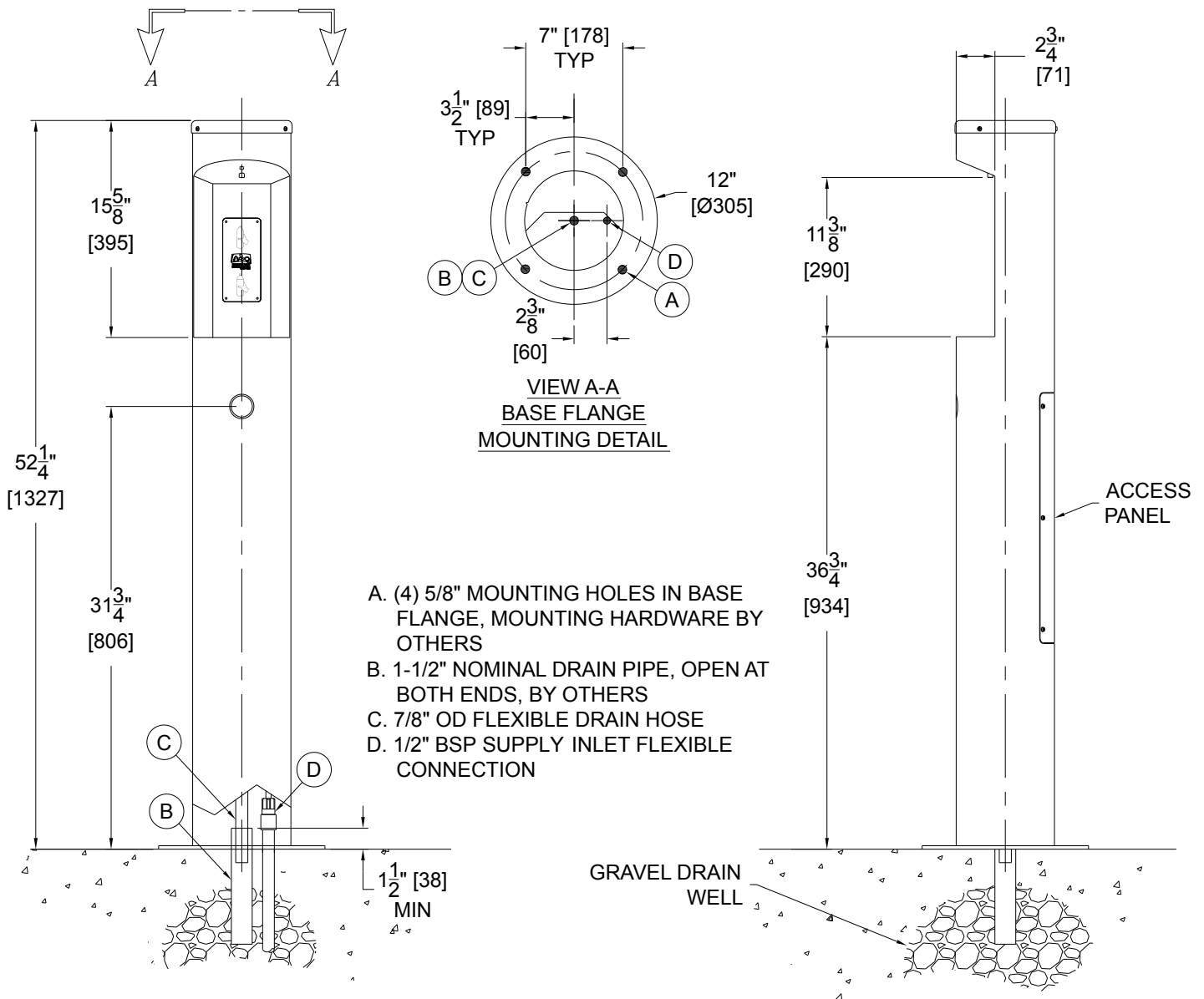
- Please leave this documentation with the owner of the fixture when finished.
- Please read this entire booklet before beginning the installation.
- Check your installation for compliance with plumbing, electrical and other applicable codes.
- Unit to be installed in accordance with AS3500.1 & AS 3500.2 and other local codes.

## Rough-in and Dimensional Drawing

### GENERAL NOTES

1. All dimensions are in inches [mm].
2. Dimensions shown are for recommended adult height. Adjust vertical dimensions as necessary to comply with federal, state, & local codes.
3. Water lines from chiller to foundation should be covered with sponge foam rubber or ice water type insulation of adequate thickness.

### OUTDOOR PEDESTAL MOUNTED BOTTLE FILLER



\* Meets US ADA requirements

# INSTALLATION, OPERATION AND MAINTENANCE INSTRUCTIONS

## Prior to Installation

### IMPORTANT

1. Read all installation instructions carefully, before proceeding.
2. Carefully remove fixture from packaging, preventing scratching or damage.
3. Unit is provided with six AA alkaline batteries.
4. Provide mounting surface, sufficient to support the fixture and loads on the fixture.
5. Provide rough-ins as shown on the roughing-in and dimensional drawing, including water supply, drain pipe and gravel drain well. (See page 2 for rough-in details)
6. Completely flush water supply lines of all foreign debris, before connecting to the fixture.

## Installation Instructions - Outdoor Bottle Filler

### INSTALLATION (SEE DRAINAGE & MOUNTING ROUGHING-IN PAGE 2)

1. Locate the unit over rough-ins on mounting pad, mark mounting holes in base flange.
2. Tilt the unit down on its side, next to the mounting location. Install ½" mounting anchors (by others). Optional -IAP (in-ground anchor plate) which is cast into the concrete, is available.
3. Feed the 7/8" OD flexible drain tube into the open ended drain tube. Connect the ½" male BSP fitting to a potable water supply. Then tilt the unit into place, making sure that the tubing is not pinched or kinked. Secure the base flange to the mounting pad.
4. Connect the battery pack to matching battery wire terminals. When connected the unit is active.
5. Test for leaks and proper operation, and then install the access panel.

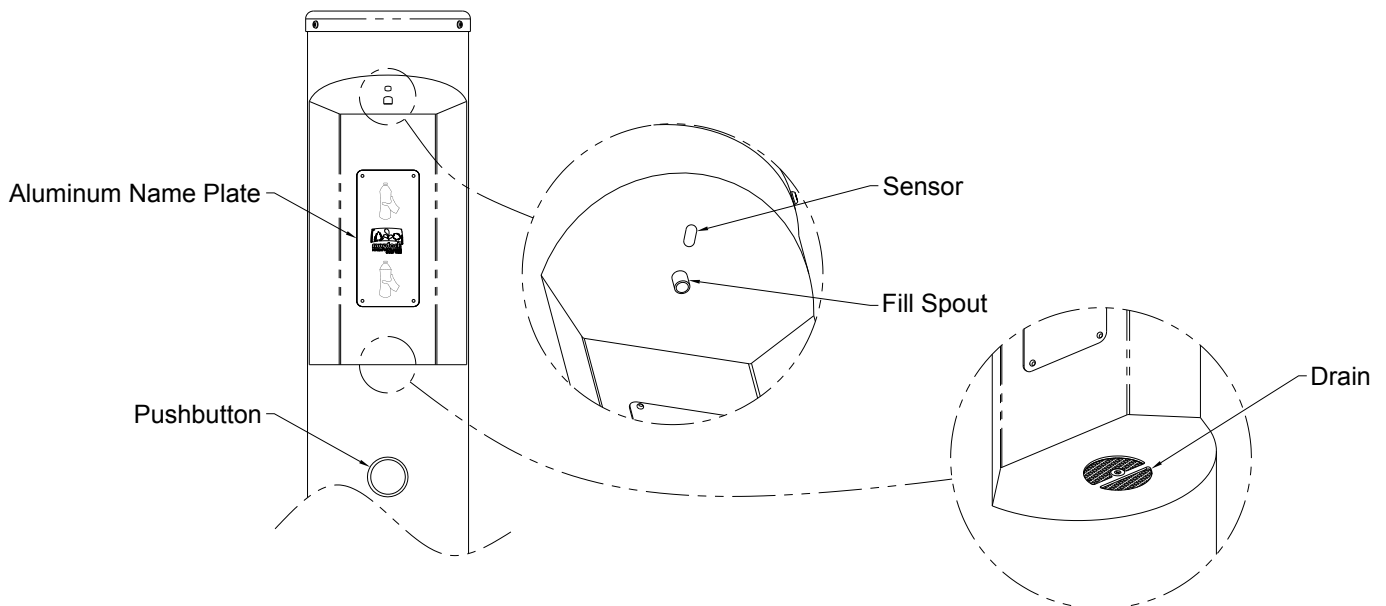
## Start Up Procedure

Air within the bottle filler system or the structure supply piping will cause an irregular spout outlet stream until purged out by incoming water. Press and hold pushbutton until steady water stream is achieved.

### OPERATION INSTRUCTIONS

**Hand operation:** Hold container to be filled just below the filler tube in the center of the unit, then push pushbutton. When the container is almost filled, release the pushbutton.

**Sensor Operation:** Hold container to be filled just below the sensor in the center of the filler spout and then move the container upward and water flow will start automatically. When the container is almost filled, lower the container below the sensor until the water stops flowing. (see label on the bottle filler)



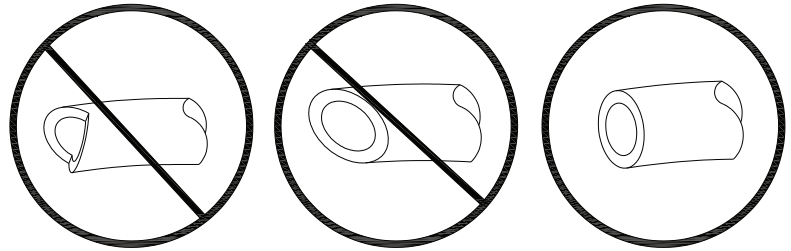
# INSTALLATION, OPERATION AND MAINTENANCE INSTRUCTIONS

## Push-in Fitting Installation

**Note:** Fittings and tube should be kept clean, bagged and undamaged prior to installation.

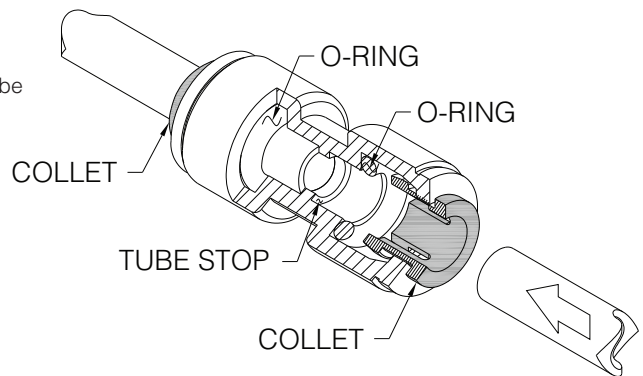
### TO CUT TUBE

Cut to fit length of 1/4" PE tubing and remove any burrs or sharp edges. Ensure that the outside diameter is free from score marks. Tube ends should be square.

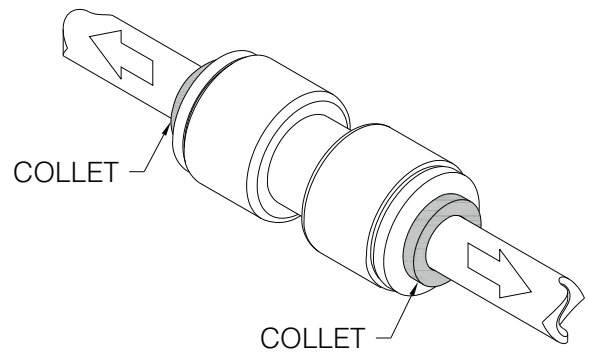


### INSERTING THE TUBE

1. Firmly and fully insert the tubing end into the push-in fitting up to the tube stop located approximately 1/2" deep.

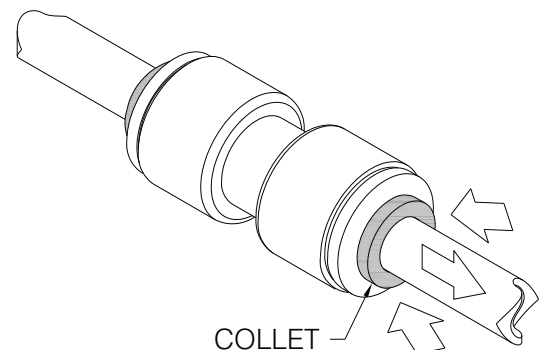


2. Pull on the fitted tubing to ensure it is secure. Tube should not come free from the fitting. Water test the connection assembly prior to leaving the site to ensure there are no leaks.



### DISCONNECTING THE TUBE

To disconnect the tube from the fitting ensure that the water line is depressurized. Push collet square towards the push-in fitting body and hold. While holding the collet in, pull on the PE tubing to remove from the push-in fitting.



## Trouble Shooting

### GENERAL TROUBLE SHOOTING

1. Restricted Or No Water Flow
  - a. Ensure water supply service stop valve is fully open.
  - b. Verify minimum 200 kpa supply line flow pressure
  - c. Check for twists or kinks in outlet tubing.
  - d. Check for debris in y-strainer
  - e. Check for blockages in outlet
  - f. Refer to Air-Trol trouble shooting guide

### SENSOR TROUBLE SHOOTING

1. If Light Within Sensor Does Not Flash When User Is Within Range:
  - a. Verify 9VDC output of battery pack
  - b. Replace batteries.
  - c. Battery polarity crossed. Replace battery pack, sensor may be damaged and also need replacement.
  - d. Sensor in "Security Mode" after 30 seconds of constant detection. Remove source of detection and wait 30 seconds before checking.
  - e. Sensor is picking up a highly reflective surface. Eliminate cause of reflection and wait 30 seconds before checking.
  - f. Replace sensor.
2. If Light Within Sensor Lens Flashes Once When Use Is Within Range:
  - a. Repair bad connection from sensor to solenoid.
  - b. There is debris or scale in the solenoid assembly. Remove solenoid, pull out plunger and spring. Clean with scale remover solution.
  - c. There is debris or scale in the center or two holes in convolution of the water diaphragm. Remove and clean.

---

## Cleaning & Maintenance Guide

### FOR POWDER COATED UNITS

Units should be cleaned using a mild soap solution with a sponge or cotton cloth. Wipe down surfaces then rinse with clean water.

### FOR STAINLESS STEEL UNITS

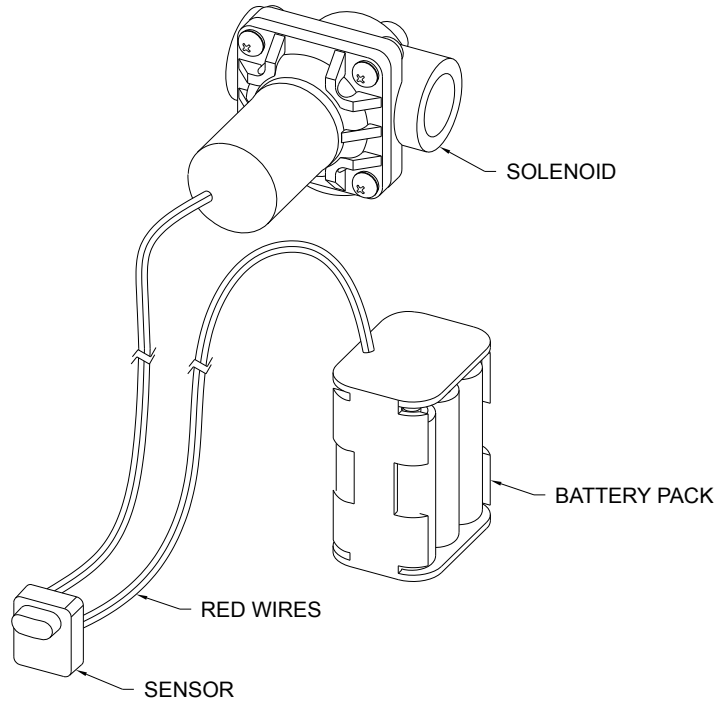
1. To remove water spots or rust spots, stainless steel cleaner/polish on a cloth is recommended.
2. If there are stubborn spots or if you wish to treat a scratch, synthetic abrasive general purpose pads such as scotch brite are recommended.
3. Apply stainless steel cleaner/ polish to the synthetic abrasive pads and carefully rub the panel with the grain.
4. DO NOT use harsh chemicals, abrasive or petroleum based cleaners. Use of these will void the Murdock warranty. DO NOT use abrasives on powder coated units.
5. Stainless steel should be kept clean at all times. If a coating of stainless steel cleaner/polish is maintained, stainless steel surfaces will retain their new, clean, polished appearance indefinitely.
6. Periodically remove access panel of cooler and clean out inline "Y" strainer

# INSTALLATION, OPERATION AND MAINTENANCE INSTRUCTIONS

## Cleaning & Maintenance Guide Continued...

### BATTERY REPLACEMENT

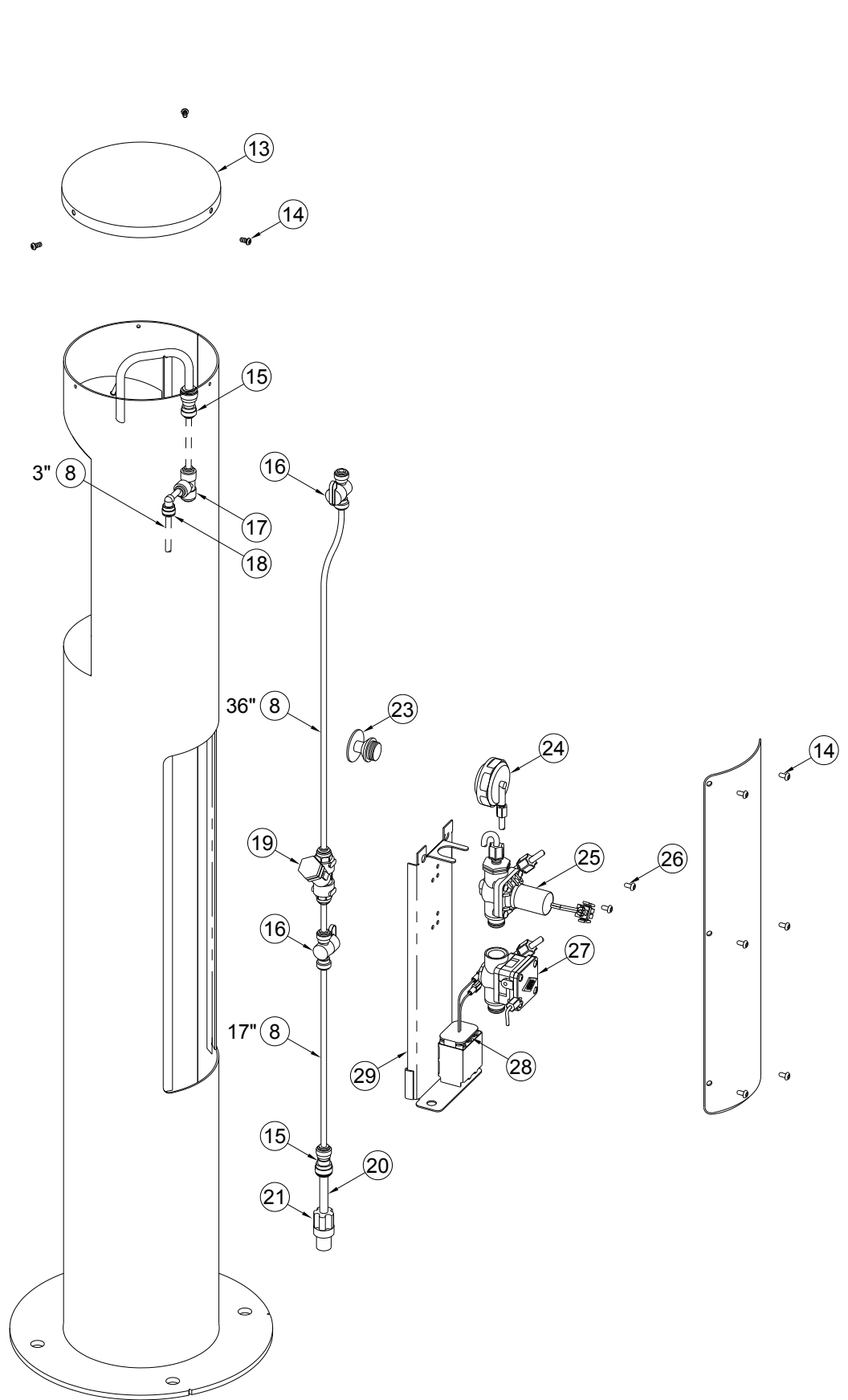
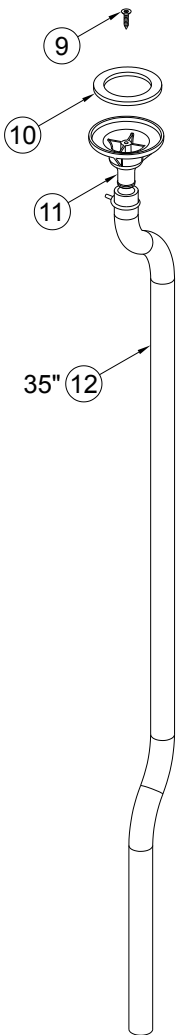
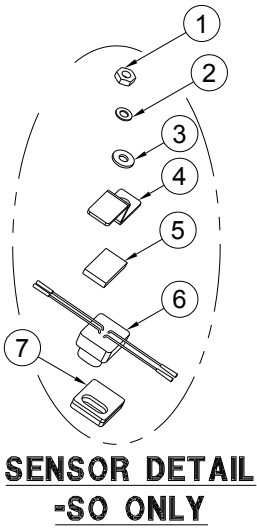
1. Remove the access panel from the back of the unit and pull the battery pack out of the metal battery box. Do not disconnect the wires from the battery pack unless necessary.
2. Replace the six alkaline AA batteries while observing polarity.
3. Put the battery pack back in the metal box and test for proper operation. Then re-install the access panel.



## Push Button and Fountain Parts Breakdown

ITEM #	PART NUMBER	DESCRIPTION	ITEM #	PART NUMBER	DESCRIPTION
1	0302-003-000	#8-32 Hex Nut	20	2170-002-500	3/8" OD Low Density PE Tubing
2	6527-108-000	#8 Internal Tooth Lock Washer	21	1895-005-000	3/8 OD Tube x 1/2" BSP Male CNNCTR
3	0331-023-000	#8 SS Flat Washer	22	7012-313-000	Replacement Filter Cartridge
4	7013-010-199	Nano Sensor Bracket	23	7002-125-002	Freeze Resistant Pushbutton
5	7013-019-199	Foam Tape	24	2566-025-002	Pushbutton Sub Assy
6	7013-057-002	Nano spacer Assy	25	2570-130-001	Replacement 9-12 V DC Solenoid Valve
7	7013-009-001	Nano Sensor Spacer	26	0112-011-000	#10-32 x 3/8" CNTR RJCT Screw
8	2169-000-000	1/4" OD Blue Tubing	27	2570-101-001	Replacement Non-Metering Air-Trol Valve
9	0124-033-000	#8-32 Self Tapping Screw	28	7013-046-001	6 AA Battery Pack
10	7000-006-000	Drain Adapter Gasket	29	7013-073-199	Valve Mounting Channel
11	7003-182-000	Drain Adapter		7013-044-199	Valve Mounting Channel For -PF
12	7013-074-199	7/8" OD Flex Drain Tube	30	7007-008-199	Pet Fountain Strainer
13	6520-500-000	Bottle Filler Lid	31	7000-006-000	Drain Adapter Gasket
14	0112-001-000	#10-31 x 3/8" Hex Screw	32	7013-049-001	Pet Fountain Bowl Assy
15	1895-123-000	1/4" x 3/8" OD Tube Push-In Fitting	33	1895-125-000	1/4" NPT x 1/4" OD Push-In Connection
16	7000-420-000	1/4 Turn Shut-Off Valve	34	2361-011-000	3/8" NPT x 1/4" NPT Female Reducer
17	1895-710-000	1/4" Push-In Union Tee	35	7013-063-199	3/8" SS Pipe
18	1895-709-000	1/4" Push-In Elbow	36	4102-250-000	5/8" Barbed Tee
19	7000-021-000	1/4" NPT "Y" Strainer	37	7013-049-002	Pet Fountain Bowl Assy

# INSTALLATION, OPERATION AND MAINTENANCE INSTRUCTIONS



# INSTALLATION, OPERATION AND MAINTENANCE INSTRUCTIONS



## Notes

---

---

---

---

---

---

---

---

---

---

---

---

---

---

---

---

---

---

---

---

---

## Contact Us

**1300 788 778**  
[www.rba.com.au](http://www.rba.com.au)  
[sales@rba.com.au](mailto:sales@rba.com.au)

**SYDNEY**  
Level 1, 32 Frederick St  
Oatley, 2223

**MELBOURNE**  
Unit 9, 56 Norcal Rd  
Nunawading, 3131

**BRISBANE**  
Unit 13, 54 Nealdon Dr  
Meadowbrook, 4131

**0800 722 111**  
[www.rbagroup.co.nz](http://www.rbagroup.co.nz)  
[sales@rbagroup.co.nz](mailto:sales@rbagroup.co.nz)

**AUCKLAND**  
300 Richmond Road  
Grey Lynn 1021