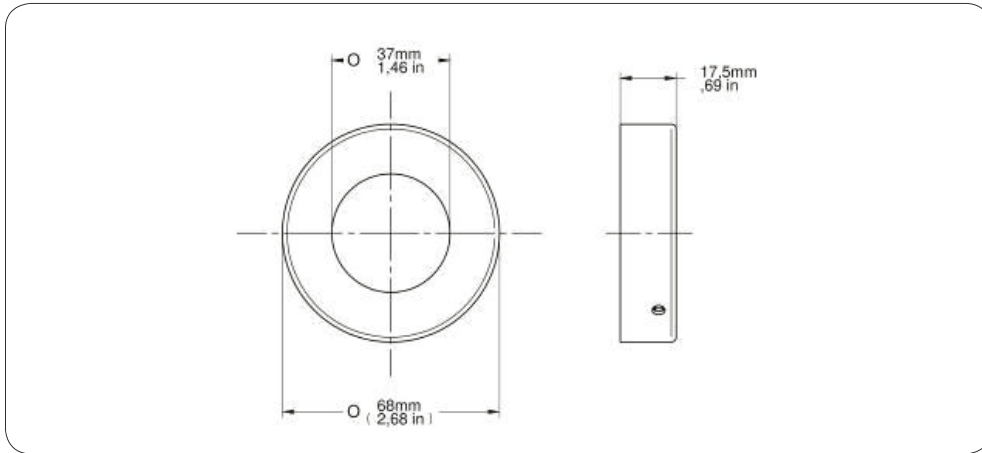


Dimensions & Rough In



**Note:** This product should be installed, by suitably qualified persons, in a fit for purpose application, to suitable materials, using suitable fixings and comply with any relevant codes. It should be inspected periodically for signs of wear and tear that may affect performance or safety.

Dimensions are subject to manufacturer's tolerance of +/-10mm. Rough-in should be completed with each fixture.

**Important:** Installation Instructions are subject to change without notice.

Please visit [www.rba.com.au](http://www.rba.com.au) for latest revision.



RBA1053-999-001

Anti-vandal Retainer



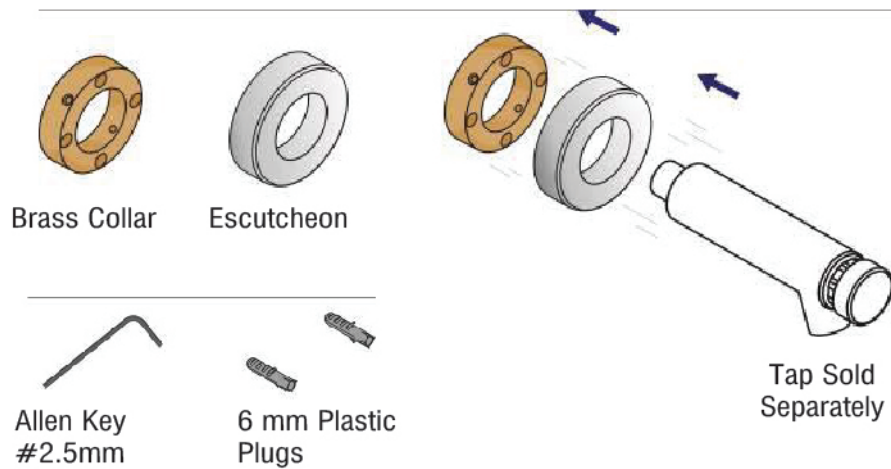
To Suit RBA1053 Series



Model	RBA1053-999-001
Date	07/03/19
Doc#	ii/rba1053 series /0319

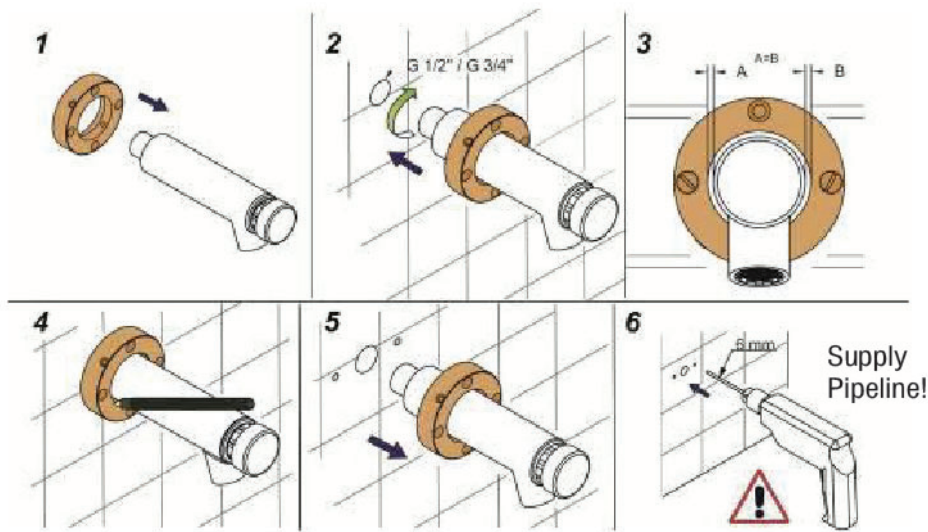
Supersedes all previous

Components



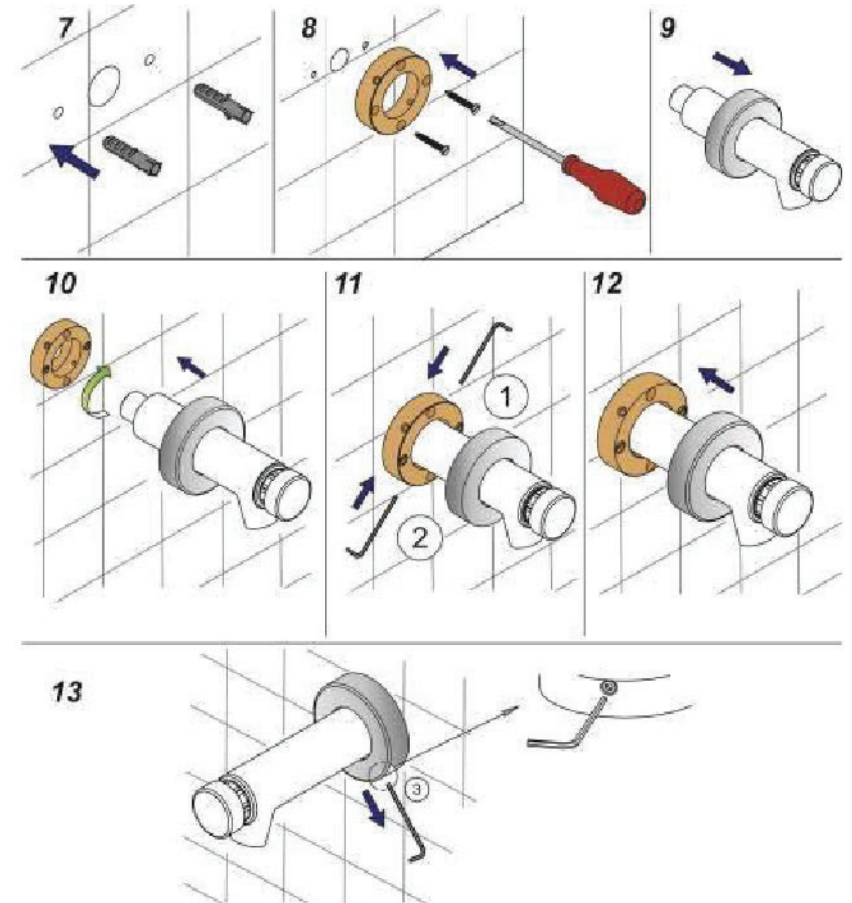
INSTALLATION

The anti-vandal retainer secures the tap to the wall, as follows:



! CAUTION: be careful not to hit supply pipeline when drilling.

INSTALLATION



The retainer in its correct position

