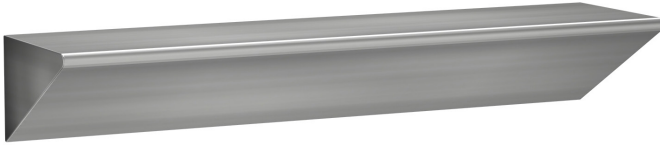


Models RBA8121-100 RBA8121-144



Materials & Features

Stainless Steel Shelf is hygienic, highly vandal resistant and is manufactured from heavy-gauge, type 304 stainless steel. All exposed welds are seamless and ground smooth to match the external surface which is satin finish.

Technical Detail

Material: 304 Stainless Steel
Finish: Satin

Available Models

- RBA8121-100** Stainless Steel Shelf - Front Fixed (Pictured)
- RBA8121-144** Stainless Steel Shelf - Fixed From Rear [typically requires plumbing duct]

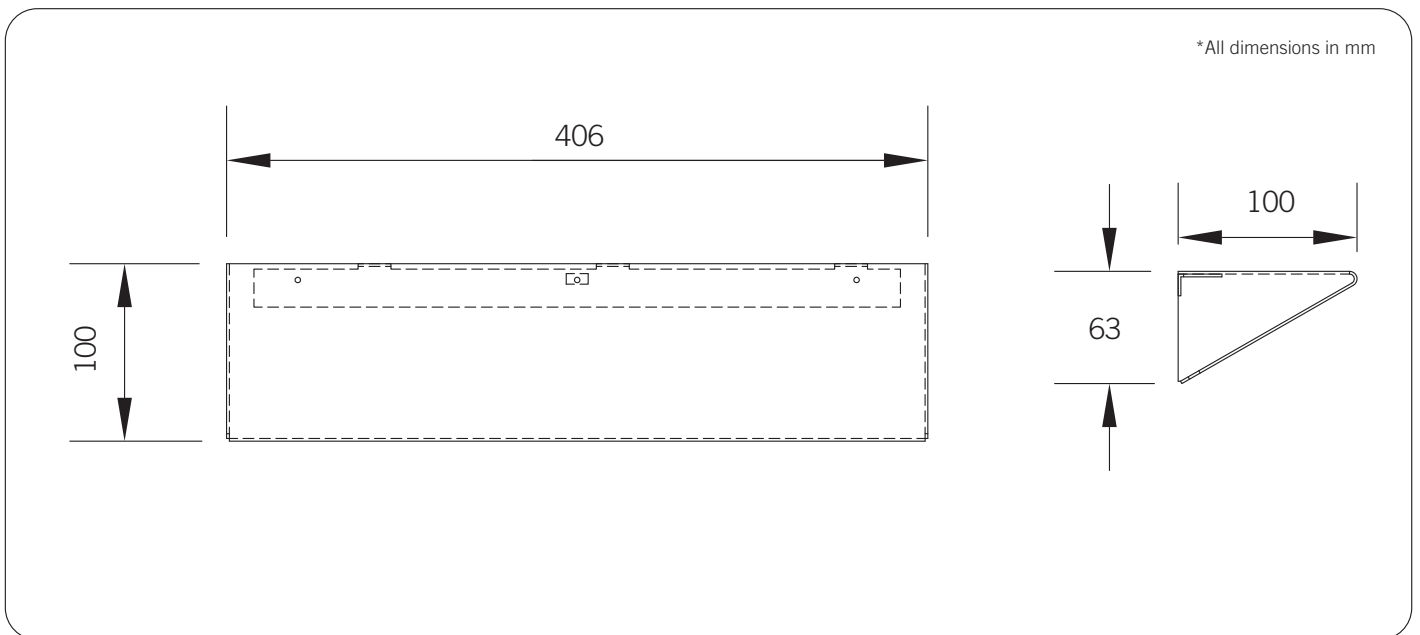
Related Products

- RBA8140-100** Ligature Resistant Toilet Roll Holder
- RBA8519-100** Ligature Resistant Shower Set

Installation

Ensure wall construction is capable of supporting the unit. Wall fixings supplied by others. Consult Installation Instructions for further details.

Important: Installation instructions and current rough-in details should be furnished with each fixture. Do not rough in without certified dimensions. Dimensions are subject to manufacturer's tolerance of +/-10mm.



Global-Mark.com.au®
Sourced/ Supplied under OMS

As improvements in the design and performance of RBA products are continuous, specifications may be subject to change without notice. The illustrations and descriptions herein are applicable to production as of the date of this Technical Data Sheet. Revised 06/21 © 2021 by RBA Group TD/Models RBA8121-100, RBA8121-144/0621