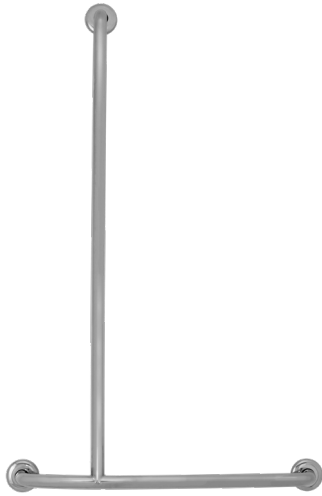


## Model RBA4118-923



### Materials & Features

Stainless steel shower T-Rail meets the requirements of AS1428.1-2009 when installed correctly. The snap flanges conceal the fixings.

### Technical Detail

Rail: 32mm [Dia], 304 Bright Polished Stainless Steel  
 Fixings: By others  
 SWL: 1100N

### Available Model

**RBA4118-923** Shower T-Rail Bright Polished, Left Hand

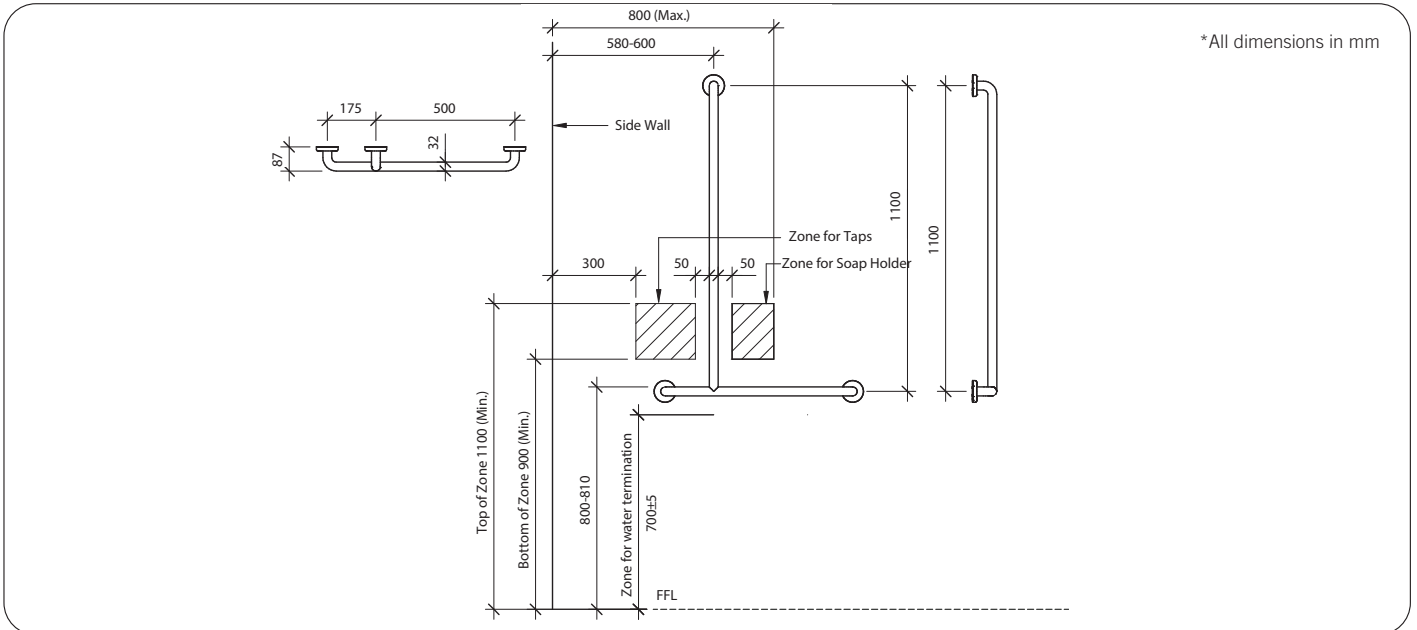
### Related Products

**RBA4118-921** Shower T-Rail Bright Polished, Right Hand  
**RBA4171-101** Shower Curtain Rail + 2 Curtains & Hooks  
**RBA4110-941** Handset, Hose & Lever Mixer Kit

### Installation

Warning: Grab rails are no stronger than the anchors or walls to which they are attached and must be firmly secured in order to support the loads for which they are intended.

**Important:** Installation instructions and current rough-in details should be furnished with each fixture. Do not rough in without certified dimensions. Dimensions are subject to manufacturer's tolerance of +/-10mm.



As improvements in the design and performance of RBA products are continuous, specifications may be subject to change without notice. The illustrations and descriptions herein are applicable to production as of the date of this Technical Data Sheet. Revised 04/21 © 2021 by RBA Group TD/Model RBA4118-923/0421