

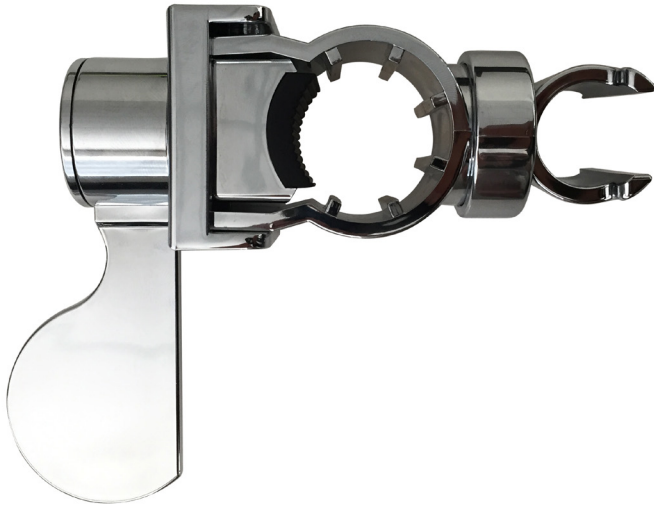
Model RBA4110-999-007

Materials and Features

Constructed from chrome plated plastic and rubber grip pad. The handset slider is designed to be installed on a 32mm diameter stainless steel shower rail. The lever handle allows for ease of use for public washrooms, offices, end of trip facilities, schools, nursing homes, stadiums, airports and accesible installations.

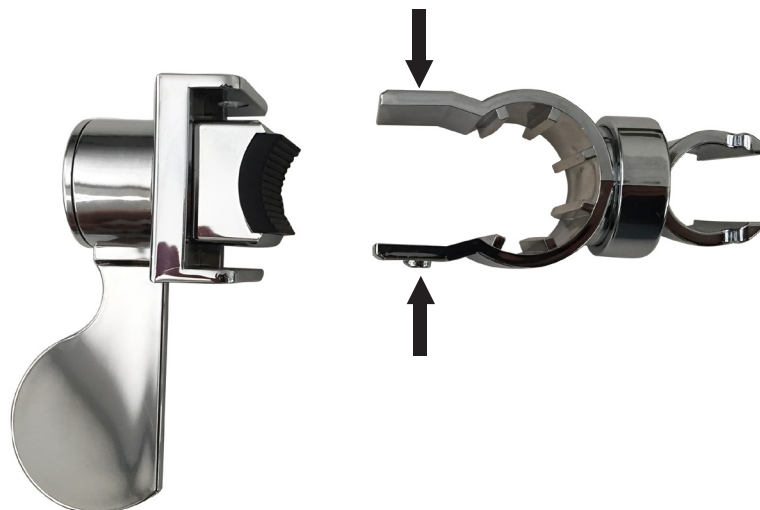
Installation

1. Pull unit apart into two pieces by squeezing centre rail component that will unlatch retaining clips. Refer Figure 1 for detail.
2. Place rail component around 32mm diameter stainless rail. Ensure shower handset holder is clicked into upright position.
3. Clip unit back together while mounted on rail.



Function

When lever arm is in the horizontal position unit will grip to grab rail. Push lever Up or Down into the vertical position to slide up or down the rail and adjust the location of the handset. Once in required location, move lever back to the horizontal position to lock on to the grab rail. You are also able to adjust the angle of the handset holder by rotating it to the required preset positions.



*All dimensions in mm

Figure 1. Push Ends to Clip and Unclip slider