

Model RBA2740-002



Materials & Features

Constructed from #304 stainless steel, this ligature resistant unit is recessed and features a ligature resistant stainless steel bubbler, bottle filler, integral drain and self-closing push button. Includes an instantaneous water cooler, ensuring incoming water is immediately chilled. Smooth radiused design eliminates sharp corners and conceals all fixings and pipework. Suitable for indoor installation only.

Technical Detail

Inlet Connection:	1/2" BSP
Outlet Connection:	40mm BSP waste
Water Pressure:	200 – 500kPa
Basin & Housing:	1.5mm, type 304 stainless steel
Refrigerant:	R-134a
Power Requirement:	220 VAC, 50Hz, single phase
Capacity:	30L/hr drinking water at 10°C [incoming 27°C, ambient 32°C]

Available Models

RBA2740-001

Recessed Ligature Resistant Water Cooler

RBA2740-002

Recessed Ligature Resistant Water Cooler & Bottle Filler [shown]

RBA2740-003

Recessed Ligature Resistant Bottle Filler

Related Products

RBA8130-200

Dignity Suite™ Ligature Resistant Hook | White

RBA8519-114

5 Star [5.9L/m] Coolum Commercial Showerhead

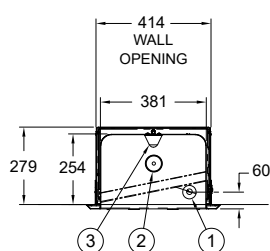
RBA8117-100

Stainless Steel Mirror

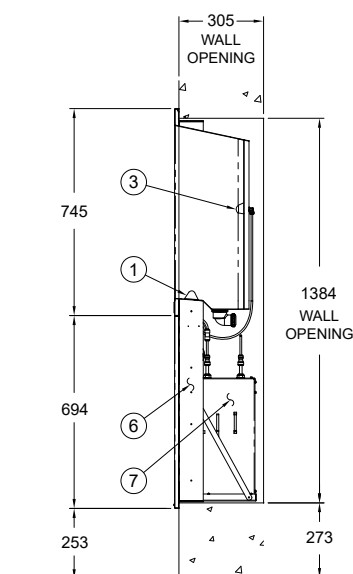
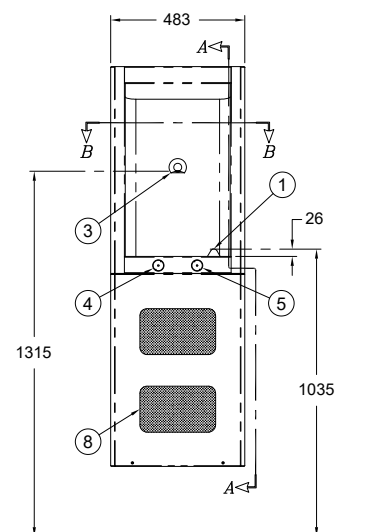
For best results, unit should be inspected and cleaned regularly as per the instructions in the RBA Product Warranty, Cleaning Care Guide, available on our websites.

Note: For Australia, Installation shall be in accordance with the PCA [Plumbing Code of Australia] and any relevant local authority requirements.

Important: Installation instructions and current rough-in details should be furnished with each fixture. Do not rough in without certified dimensions. Dimensions are subject to manufacturer's tolerance of +/-10mm. RBA recommends viewing fixtures under the same lighting conditions where they are to be installed.



1. LIGATURE RESISTANT BUBBLER
2. LIGATURE RESISTANT STRAINER
3. OPTIONAL -BF LIGATURE RESISTANT CUP/BOTTLE FILLER
4. VANDAL RESISTANT PUSHBUTTON ACTUATOR FOR CUP/BOTTLE FILLER
5. VANDAL RESISTANT PUSHBUTTON ACTUATOR FOR BUBBLER
6. MOUNTING FRAME ASSEMBLY
7. 8.0 GPH CHILLER
8. VENTILATION PANEL



As improvements in the design and performance of RBA products are continuous, specifications may be subject to change without notice.

The illustrations and descriptions herein are applicable to production as of the date of this Technical Data Sheet. Revised 12/25 © 2025 by RBA Group TD/Model RBA2740-002/1225



Please note: While RBA takes all reasonable measures to ensure our ligature resistant products consistently perform as advertised, we do not perform load testing on every item. RBA strongly recommends all customers perform their own load testing on each item prior to installation and at regular intervals throughout the life of the product.

RBA does not offer or warrant any of our products as 'anti-ligature' as no product can be truly ligature-free. RBA will not be liable for any claims, losses or damage arising from ligature attachment to our products. It is the responsibility of the purchaser and installer to ensure supplied products are suitable for the environments they are to be installed into.