

MODELS

SECURITY BASIN

RBA8880-100

Security Basin | Satin [shown]

RBA8880-777-002

Security Basin | Enviroglaze® White



As improvements in the design and performance of RBA products are continuous, specifications may be subject to change without notice. The illustrations and descriptions herein are applicable to production as of the date of this Installation Instructions Sheet. Revised 09/25 © 2025 by RBA Group II/Model RBA8880-series/0925

Description

Manufactured from stainless steel with all exposed surfaces in satin finish. Trap fully enclosed. Rear fixed option available on request. Fully concealed fixings. Radiused corners and tapware for ligature and vandal resistance. Tapware included.

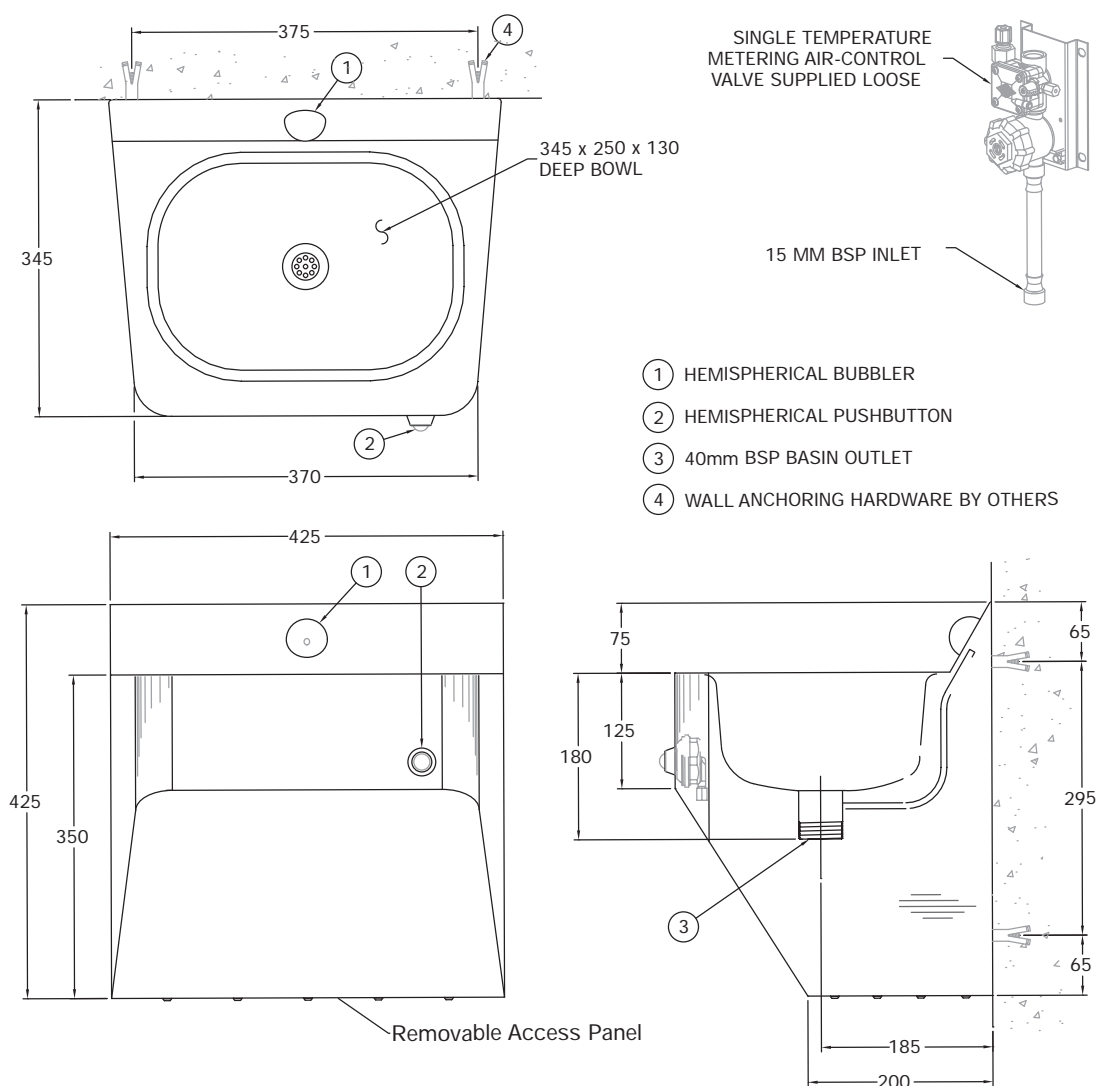
Components supplied

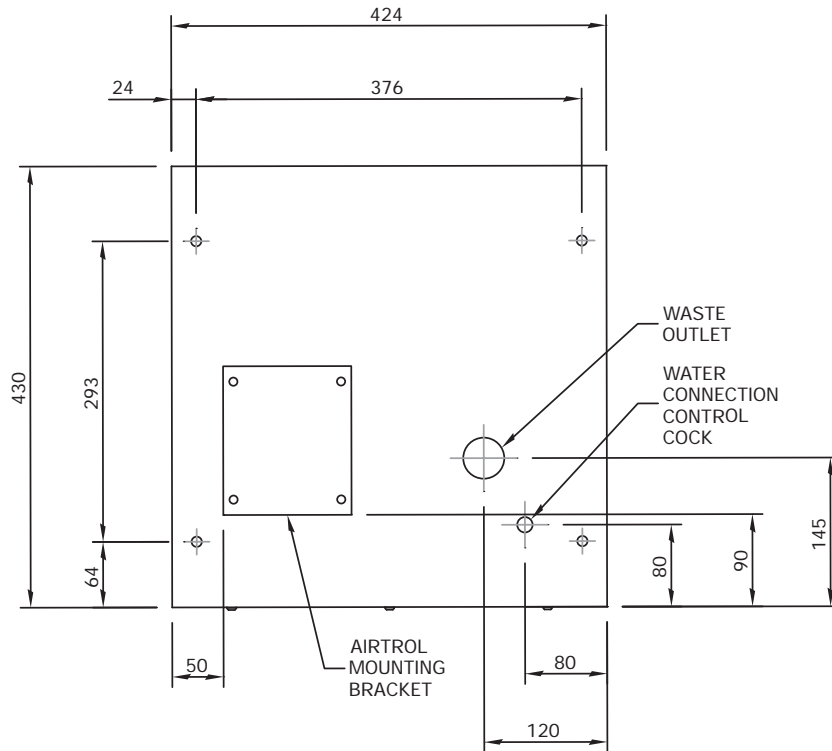
- Security Basin
- RBA8511-series Pneumatic Air-Trol
- 40mm Waste Outlet
- Torx Security Bit
- Water and Air Tubes

Components supplied by others

- 40mm P-Trap
- Fixings

Rough-In





Installation Notes

- Please leave this documentation with the owner of the fixture when finished.
- Please read the entirety of this booklet before commencing installation. Check your installation for compliance with relevant local standards.
- Unit is to be installed in accordance with the Plumbing Code of Australia [PCA] and AS/NZS3500.
- Installation Instructions are subject to change without notice. Please visit our websites for latest revision

Refer to the Installation Instructions for the RBA8511-series Pneumatic Air-Trol for specific valve requirements. If the Air-Trol valve is to be located within the basin frame, the water supply should be terminated with a mini-cock [by others] as in the above diagram. Waste outlet location as marked on diagram is to suit a 40mm plastic P-trap [by others]. This location may vary depending on the trap used and should be confirmed prior to rough-in.

Installation

1. Determine the required mounting height.
2. Install the Air-Trol valve onto the wall using appropriate fixings [by others] as per the rough-in. Thoroughly flush the supply line and then connect the Air-Trol valve.
3. Remove the access panel from the bottom of the basin using the provided security bit. Ensuring the basin is level, fix it to the wall through the four fixing points marked on the rough-in using appropriate fixings [by others].
4. Fit the P-trap [by others] and make the necessary water and air-tube connections.
5. Adjust the flow time [referring to the Installation Instructions for the RBA8511-series Pneumatic Air-Trol] and check for leaks, etc.
6. Replace the access panel.



Note: This product should be installed, by suitably qualified persons, in a fit for purpose application, to suitable materials, using suitable fixings and comply with any relevant codes. It should be inspected periodically for signs of wear and tear that may affect performance or safety.

Dimensions are subject to manufacturer's tolerance of +/-10mm. Rough-in should be completed with each fixture.

Important: Installation Instructions are subject to change without notice. Please visit **our websites** for latest revision.