

MODEL

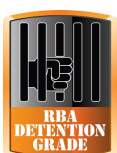
RECESSED TOILET ROLL HOLDER

RBA8140-100

Recessed Toilet Roll Holder | Stainless

RBA8140-117

Recessed Toilet Roll Holder | White



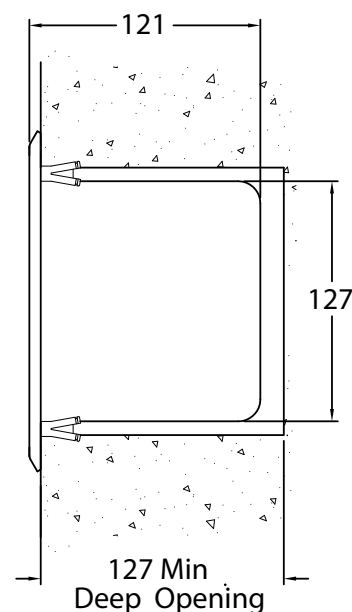
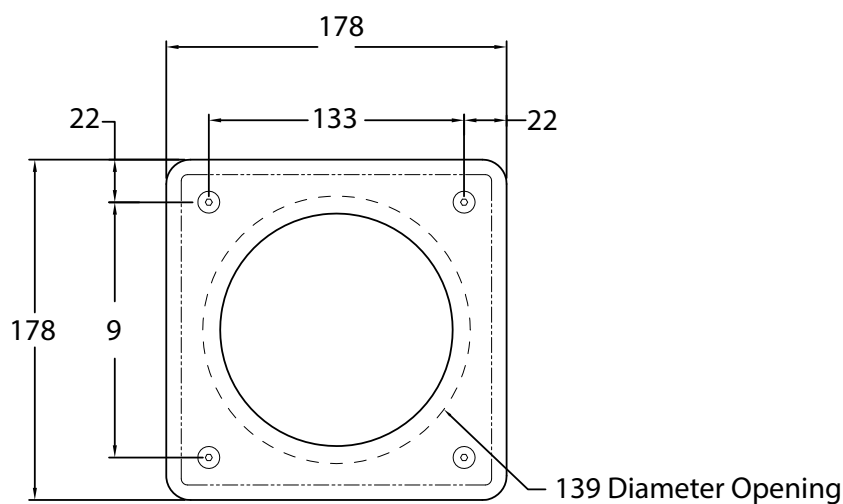
As improvements in the design and performance of RBA products are continuous, specifications may be subject to change without notice. The illustrations and descriptions herein are applicable to production as of the date of this Installation Instructions Sheet. Revised 12/25 © 2025 by RBA Group II/RBA8140-100-Series/1225

Description

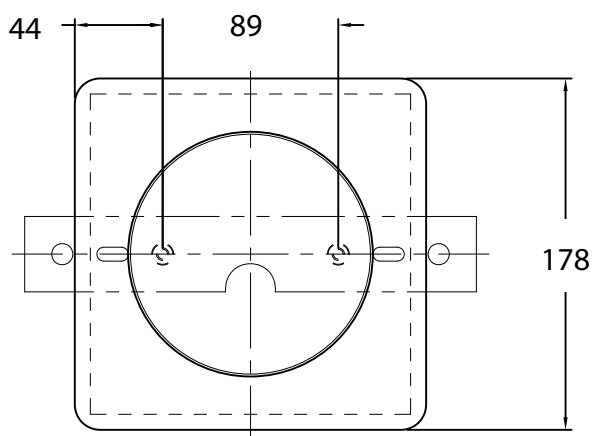
Manufactured from stainless steel with all exposed surfaces in satin finish. Rear fixed option available on request. Countersunk drill-holes to accommodate fixings. Bevelled faced plate for ligature resistance.

Dimensions & Rough In

Front Fix



Rear Fix



*All dimensions in mm

Installation Notes

- Please leave this documentation with the owner of the fixture when finished.
- Please read the entirety of this booklet before commencing installation. Check your installation for compliance with relevant local standards.

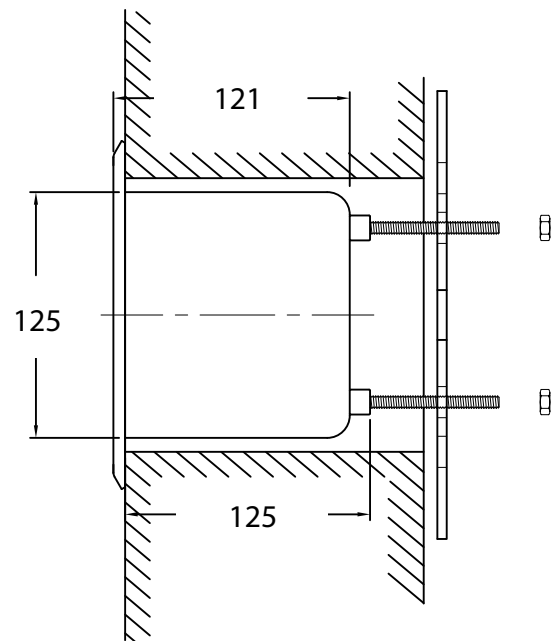
Front Fix Installation Instructions

1. Installation requires a rough wall opening of approximately, 139mm dia. x 127mm [D].
2. Using toilet roll holder as a template, locate mounting point.
3. Drill holes for wall anchors [by others]. Install anchors.
4. Secure paper holder to wall using 1/4" - 20 UNC Vandal resistant screws [provided].
5. If required, seal with anti-pick sealant [by others] to eliminate gaps between wall and fixtures.

Rear Fix Installation Instructions

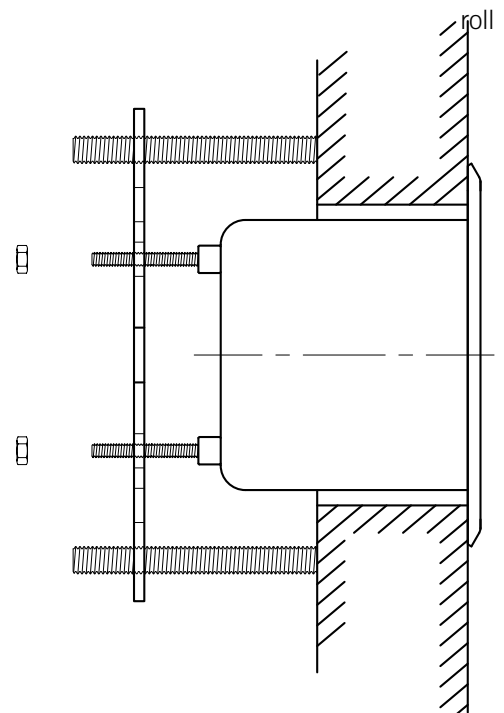
Wall 3mm thick or greater

1. Hand tighten threaded rods into nuts on back of recessed paper holder. Place the recessed paper holder in wall opening.
2. From chase side, place back plate over studs screw nuts onto rods, & tighten.
3. If required, seal with anti-pick sealant [by others] to eliminate gaps between wall and fixtures.



Wall less than 3mm thick

1. Hand tighten threaded rods into nuts on back of recessed toilet holder. Place the recessed paper holder in wall opening.
2. From chase side, place back plate over studs screw nuts onto rods.
3. Thread 1/2" studs through plate & tighten against wall to secure unit.
4. If required, seal with anti-pick sealant [by others] to eliminate gaps between wall and fixtures.





Please note: While RBA takes all reasonable measures to ensure our ligature resistant products consistently perform as advertised, we do not perform load testing on every item. RBA strongly recommends all customers perform their own load testing on each item prior to installation and at regular intervals throughout the life of the product.

RBA does not offer or warrant any of our products as 'anti-ligature' as no product can be truly ligature-free. RBA will not be liable for any claims, losses or damage arising from ligature attachment to our products. It is the responsibility of the purchaser and installer to ensure supplied products are suitable for the environments they are to be installed into.

Note: This product should be installed, by suitably qualified persons, in a fit for purpose application, to suitable materials, using suitable fixings and comply with any relevant codes. It should be inspected periodically for signs of wear and tear that may affect performance or safety.

Dimensions are subject to manufacturer's tolerance of +/-10mm. Rough-in should be completed with each fixture.

Important: Installation Instructions are subject to change without notice. Please visit **our websites** for latest revision.