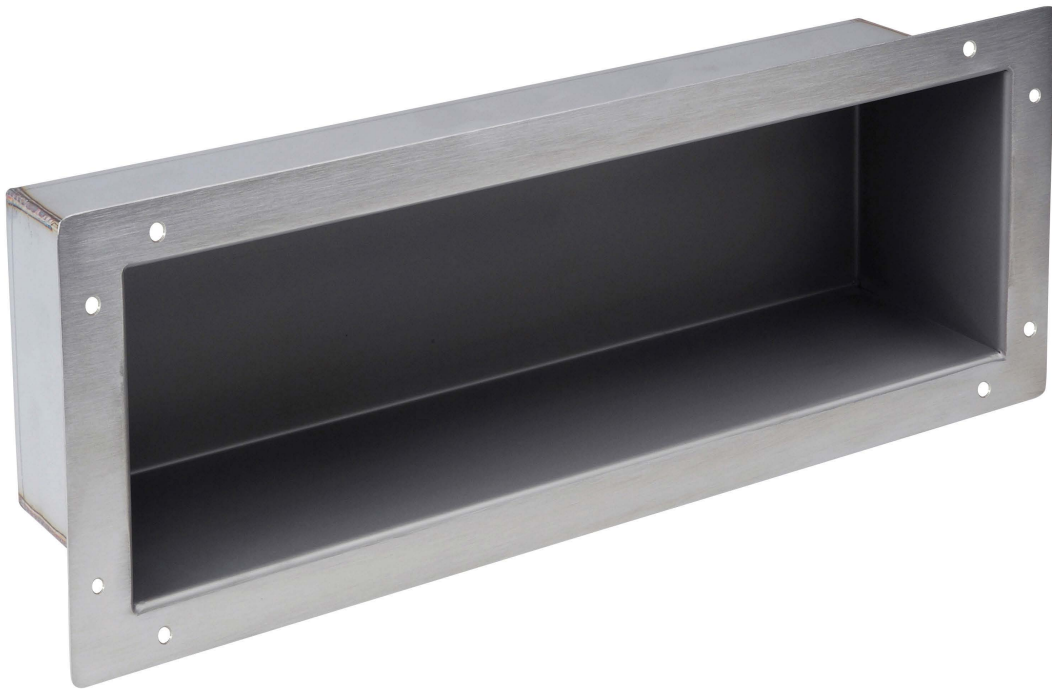


MODEL

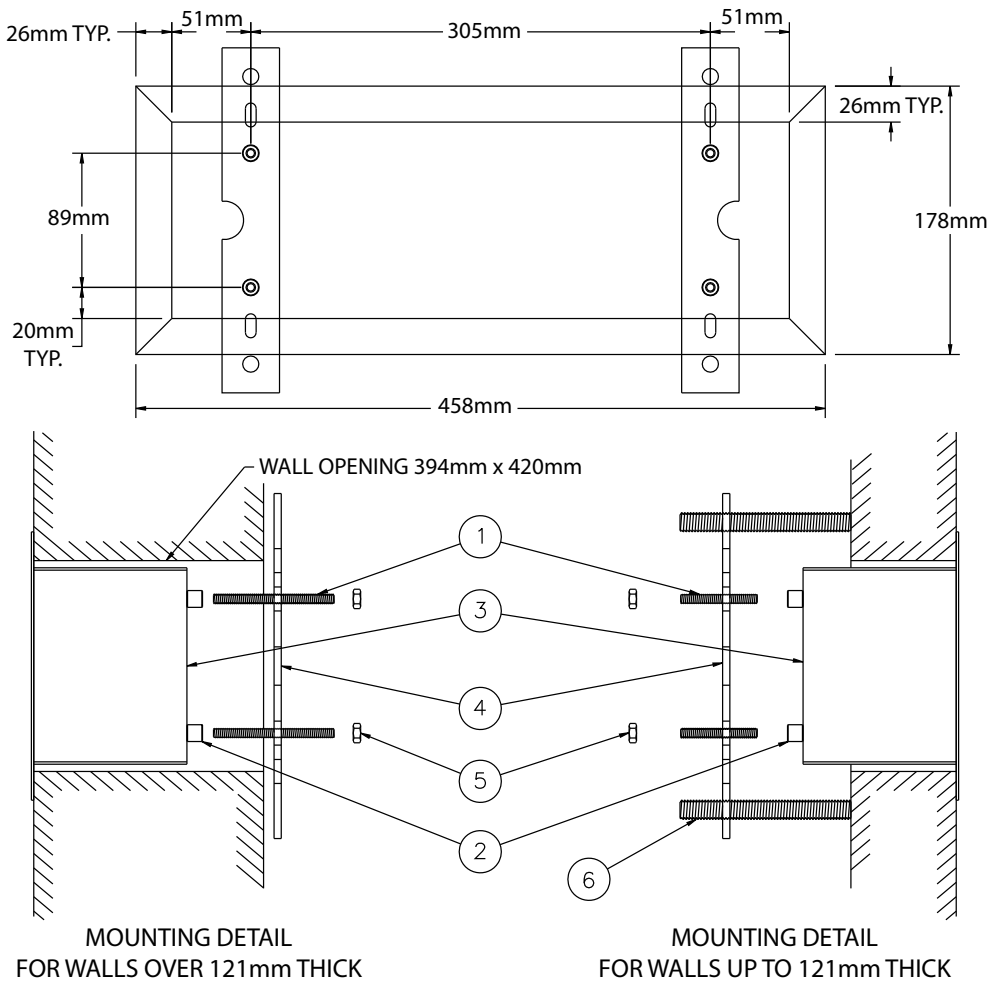
RECESSED SHELF

RBA8120-100
RBA8120-117

Recessed Shelf Stainless Steel | Satin
Recessed Shelf Stainless Steel | Enviroglaze® White



Rough-Ins & Dimensional Drawings



Installation Instructions

Walls over 121mm thick

1. Hand tighten mounting studs (1) into nuts (2) on back of recessed shelf (3). Place shelf (3) in wall opening.
2. From chase side, place back (4) over studs (1), screw nuts (5) on to studs (1) and tighten. Note: Do not exceed 9Nm max. torque on mounting nuts (5).

Walls up to 121mm thick

1. Hand tighten mounting studs (1) into nuts (2) on back of recessed shelf (3). Place shelf (3) in wall opening.
2. From chase side, place back (4) over studs (1), screw nuts (5) on to studs (1). Thread 1/2" studs (6) through plate (4) & tighten against wall to secure shelf (3).

Note: This product should be installed, by suitably qualified persons, in a fit for purpose application, to suitable materials, using suitable fixings and comply with any relevant codes. It should be inspected periodically for signs of wear and tear that may affect performance or safety. Dimensions are subject to manufacturer's tolerance of +/-10mm. Rough-in should be completed with each fixture. Important: Installation Instructions are subject to change without notice. Please visit www.rba.com.au for latest revision