

MODEL

WALL MOUNTED DRINKING FOUNTAIN

RBA8900-018

Wall Mounted Drinking Fountain



As improvements in the design and performance of RBA products are continuous, specifications may be subject to change without notice. The illustrations and descriptions herein are applicable to production as of the date of this Installation Instructions Sheet. Revised 10/24 © 2024 by RBA Group II/Model RBA8900-018/1024

This product is to be installed in accordance with the Plumbing Code of Australia (NCC Vol. 3), AS/NZS3500.1 and AS/NZS3500.2 as well as any other applicable requirements subject to the jurisdiction under which the product may be installed. Please read the entirety of this booklet before commencing installation. Please leave this booklet with the owner of the fixture when finished.

The drinking fountain is “wall mounted” and should preferably be fixed to a masonry wall with suitable wall anchors provided by others.

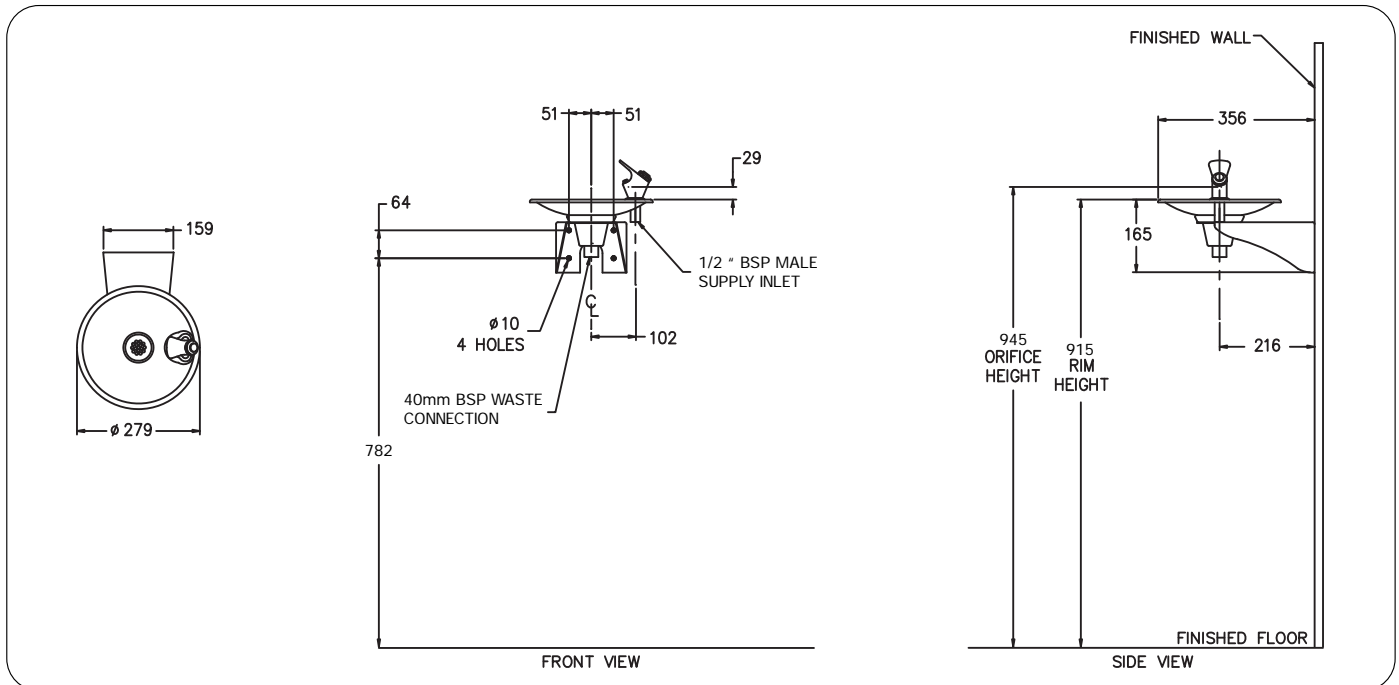
Technical Data

Inlet Connection:	G½B
Outlet Connection:	40mm BSP waste
Water Pressure:	200-500kPa
Water Temperature:	4-30°C
Basin and Housing:	1.6mm, type 304 Stainless Steel

Components Supplied

- Stainless steel drinking fountain
- Bubbler assembly
- Wall anchors [by others]

Dimensions



Installation

1. Check architects drawing for mounting and details.
2. Place the unit in the required location and mark up fixing locations.
3. Place unit and then fix unit to wall using appropriate anchors and bolts supplied by others.
4. Mount bubbler assembly.
5. Flush water lines to remove solids from the pipe lines before making required supply and drainage connections.
6. Turn on water and test for leaks.

NOTE: BUBBLER WILL NOT TOLERATE DIRT OR GRIT AND WILL NOT SHUT OFF IF CONTAMINATED.

Spare Parts

RBA Code No.	Description
RBA8900-999-002	Replacement Cartridge

Troubleshooting

Problem	Solution
Restricted or no water flow	<ol style="list-style-type: none"> Ensure water supply service stop valve is fully open. Check the water inlet “Y” Strainer. Sediment from the main supply can get trapped in the screen along with installation materials such as pipe dope and flux. The screen should be cleaned and checked on a regular basis and replace if needed.
Water flows continuously	<ol style="list-style-type: none"> Ensure cartridge is not blocked with dirt by removing and cleaning cartridge. Then reinsert cartridge. Cartridge may be damaged and needs replacing [see spare parts section].
If there is a leak under the knob	<ol style="list-style-type: none"> Check if screws are loose. If loose, tighten the brass screw under the white flow adjustent screw. Cartridge may be damaged and needs replacing [see spare parts section].
If flow stream is particularly short or long	<ol style="list-style-type: none"> Verify minimum 200kPa and maximum 500kPa supply line flow pressure. Check if cartridge adjustment is required by removing button, adjust the white screw in the cartridge in a clockwise direction to reduce, or counter clockwise to increase.