



COMMERCIAL WASHROOM



RBA1882-100-005

Nautilus WC Electronic Dual Flush Valve
Mains Pressure incl. Small Black Mounting Plate

Table of CONTENTS

Elouera Behind the Mirror	03
PVD Brushed Brass	05
PVD Gunmetal	07
Matte Black	09
Fino Collection	11
Baby Change	12
Accessible	13
Washroom Accessories	17
Public Amenities	22
Plumbing & Showers	24
Mental Healthcare	27
Bariatric	28
Changing Places	29

ELOUERA BEHIND THE MIRROR



Designed and constructed in Australia.

Minimalist, frameless aesthetic conceals washroom fixtures behind mirror.

Integrates directly with existing Building Management Systems for consumable tracking.

Perfect for Green Star projects with industry-leading efficiency and waste-saving innovations.

Prioritise user health with hygienic sensor-operated and touch-free fixtures.

The latest from RBA Group, your local specialist in stylish and durable commercial bathroom fixtures. The Elouera Behind the Mirror System is a complete, convenient and clutter-free handwashing experience for premium projects looking to set themselves apart. Find out more at rba.com.au/elouera

Elouera Behind the Mirror fixtures are also available separately.



Elouera Behind the Mirror Soap Dispenser

RBA6200-004 | Foam
RBA6200-005 | Liquid

Type #304 stainless steel backing plate, satin finish. Sensor operated dispenser designed for installation within cabinetry. Chrome-plated brass nozzle includes intuitive adjustable sensor. 1L capacity. 96 [W] x 375 [H] x 107mm [D]



Elouera Behind the Mirror Paper Towel Dispenser

RBA6100-002
RBA6100-003 | w/ TowelMate®

Type #304 stainless steel, satin finish. Designed for installation within cabinetry. 400 C-fold or 525 multifold paper towels. Optional TowelMate® add-on reduces paper waste by up to 20%. 272 [W] x 300 [H] x 105mm [D]



Elouera Behind the Mirror Hand Dryer

RBA6300-002
RBA6300-003 | w/ Backing Plate

Type #304 stainless steel frame. High speed action quickly dries hands in 10-15s. Includes convenient Hot/Cold air switch. Optional stainless backing plate for installation flexibility. 200 [W] x 261 [H] x 121mm [D]



Bobrick Circular Waste Chute

B529 | Bright Polish
B532 | Satin Finish

Type #304 stainless steel. Designed for installation into a countertop to provide access to recessed waste bin.



PVD BRUSHED BRASS



öken Robe Hook

RBA1631-500

Heavy-duty brass, PVD Brushed Brass finish. Dual fixing points for durability. Radiused corners and edges to minimise catching. 22 [W] x 72 [H] x 30mm [D]



öken Toilet Roll Holder

RBA1631-512

Heavy-duty brass, PVD Brushed Brass finish. Dual fixing points for durability. Radiused corners and edges to minimise catching. 165 [W] x 25 [H] x 60mm [D]



öken Double Toilet Roll Holder

RBA1631-522

Heavy-duty brass, PVD Brushed Brass finish. Dual fixing points for durability. Radiused corners and edges to minimise catching. 300 [W] x 25 [H] x 60mm [D]



ända Accessible Shelf

RBA1631-506

Heavy-duty brass, PVD Brushed Brass finish. Frosted acrylic shelf. Radiused corners and edges to minimise catching. 395 [W] x 29 [H] x 147mm [D]



Coogee Sensor Tap Basin Mount

RBA1301-500

Lead-free DZR brass, PVD Brushed Brass finish. 6 Star WELS rating [6 LPM]. Sensor activation minimises common touchpoints. Easy installation and maintenance. Includes battery backup for continuous operation. 46 [dia.] x 175 [H] x 140mm [D]



Coogee Sensor Tap Wall Mount

RBA1311-500

Lead-free DZR brass, PVD Brushed Brass finish. 6 Star WELS rating [6 LPM]. Sensor activation minimises common touchpoints. Easy installation and maintenance. Includes battery backup for continuous operation. 60 [dia.] x 61 [H] x 199mm [D]



5 Star Shower T-Rail Kit

RBA4805-711 | T-Rail only
RBA4805-721 | T-Rail Kit

Type #304 stainless steel, PVD Brushed Brass finish. 6.0 LPM, 5 Star WELS. Handset and hose [1.5m in length] in Brushed Brass. Modular design allows rail to be positioned as LH, RH or centred. 675 [W] x 1096mm [H]



Paper Towel Dispenser

RBA1655-100

Type #304 stainless steel, PVD Brushed Brass finish. 400 C-fold or 525 multifold capacity. Hemmed opening for added safety. 282 [W] x 360 [H] x 100mm [D]



Accessible Backrest

RBA4805-601

Type #304 stainless steel frame. PVD Brushed Brass finish. White polyurethane backrest pad. Site adjustable. 607 [W] x 164 [H] x 458mm [D] max



Folding Shower Seat

RBA4157-777-006

1.2mm Type #304 stainless steel, PVD Brushed Brass finish frame. Self-draining white phenolic seat. Support legs fold away when not in use. 960 [W] x 480 [H] x 400mm [D]



Straight Rail



RBA4805-030 | 300mm
RBA4805-045 | 450mm
RBA4805-090 | 900mm

Type #304 stainless steel,
 PVD Brushed Brass finish.
 Concealed fixings.
 [Length] x 32mm [dia.]

Ambulant 90° Grab Rail Ambidextrous



RBA4805-450

Type #304 stainless steel,
 PVD Brushed Brass finish.
 Unit is ambidextrous, allowing
 installation as LH or RH rail.
 450 [W] x 450mm [H]

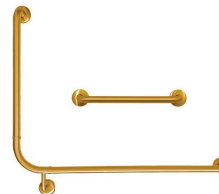
90° LH + 450 Straight Grab Rail Set



RBA4805-345

Type #304 stainless steel,
 PVD Brushed Brass finish.
 Incl. 450mm straight rail.
 950 [W] x 700mm [H]

90° RH + 450 Straight Grab Rail Set



RBA4805-346

Type #304 stainless steel,
 PVD Brushed Brass finish.
 Incl. 450mm straight rail.
 950 [W] x 700mm [H]

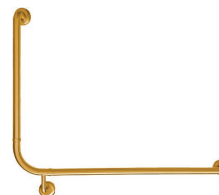
Accessible 90° Grab Rail | LH



RBA4805-901

Type #304 stainless steel,
 PVD Brushed Brass finish.
 950 [W] x 700mm [H]

Accessible 90° Grab Rail | RH



RBA4805-911

Type #304 stainless steel,
 PVD Brushed Brass finish.
 950 [W] x 700mm [H]

PVD GUNMETAL



oken Robe Hook

RBA1631-600

Heavy-duty brass, PVD Gunmetal finish. Dual fixing points for durability. Radiused corners and edges to minimise catching. 22 [W] x 72 [H] x 30mm [D]



oken Toilet Roll Holder

RBA1631-612

Heavy-duty brass, PVD Gunmetal finish. Dual fixing points for durability. Radiused corners and edges to minimise catching. 165 [W] x 25 [H] x 60mm [D]



oken Double Toilet Roll Holder

RBA1631-622

Heavy-duty brass, PVD Gunmetal finish. Dual fixing points for durability. Radiused corners and edges to minimise catching. 300 [W] x 25 [H] x 60mm [D]



enda Accessible Shelf

RBA1631-606

Heavy-duty brass, PVD Gunmetal finish. Frosted acrylic shelf. Radiused corners and edges to minimise catching. 395 [W] x 29 [H] x 147mm [D]



Coogee Sensor Tap Basin Mount

RBA1301-600

Lead-free DZR brass, PVD Gunmetal finish. 6 Star WELS rating [6 LPM] Sensor activation minimises common touchpoints. Easy installation and maintenance. Includes battery backup for continuous operation. 46 [dia.] x 175 [H] x 140mm [D]



Coogee Sensor Tap Wall Mount

RBA1311-600

Lead-free DZR brass, PVD Gunmetal finish. 6 Star WELS rating [6 LPM] Sensor activation minimises common touchpoints. Easy installation and maintenance. Includes battery backup for continuous operation. 60 [dia.] x 61 [H] x 197mm [D]



5 Star Shower T-Rail Kit

RBA4806-711 | T-Rail only
RBA4806-721 | T-Rail Kit

Type #304 stainless steel, PVD Gunmetal finish. 6.0 LPM, 5 Star WELS. Handset and hose [1.5m in length] in Gunmetal. Modular design allows rail to be positioned as LH, RH or centred. 675 [W] x 1096mm [H]



Paper Towel Dispenser

RBA1656-100

Type #304 stainless steel, PVD Gunmetal finish. 400 C-fold or 525 multifold capacity. Hemmed opening for added safety. 282 [W] x 360 [H] x 100mm [D]



Accessible Backrest

RBA4806-601

Type #304 stainless steel frame. PVD Gunmetal finish. White polyurethane backrest pad. Site adjustable. 607 [W] x 164 [H] x 458mm [D] max



Folding Shower Seat

RBA4157-777-007

12mm Type #304 stainless steel, PVD Gunmetal finish frame. Self-draining white phenolic seat. Support legs fold away when not in use. 960 [W] x 480 [H] x 400mm [D]



Straight Grab Rail

RBA4806-030 | 300mm
RBA4806-045 | 450mm
RBA4806-090 | 900mm

Type #304 stainless steel,
 PVD Gunmetal finish.
 Concealed fixings.
 [Length] x 32mm [dia.]



Ambulant 90° Grab Rail Ambidextrous

RBA4806-450

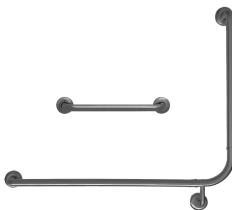
Type #304 stainless steel,
 PVD Gunmetal finish.
 Unit is ambidextrous, allowing
 installation as LH or RH rail.
 450 [W] x 450mm [H]



90° LH + 450 Straight Grab Rail Set

RBA4806-345

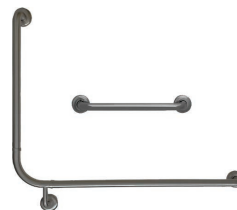
Type #304 stainless steel,
 PVD Gunmetal finish.
 Incl. 450mm straight rail.
 950 [W] x 700mm [H]



90° RH + 450 Straight Grab Rail Set

RBA4806-346

Type #304 stainless steel,
 PVD Gunmetal finish.
 Incl. 450mm straight rail.
 950 [W] x 700mm [H]



Accessible 90° Grab Rail | LH

RBA4806-901

Type #304 stainless steel,
 PVD Gunmetal finish.
 950 [W] x 700mm [H]



Accessible 90° Grab Rail | RH

RBA4806-911

Type #304 stainless steel,
 PVD Gunmetal finish.
 950 [W] x 700mm [H]



MATTE BLACK



Bobrick Accessible Safety Glass Mirror

RBA8117-102

Type #304 stainless steel angle frame, Matte Black finish. Tempered safety glass. Concealed wall hanger. 406 [W] x 990mm [H]



Vertical Liquid Soap Dispenser

RBA7742-777-002

Type #304 stainless steel, Matte Black finish. 1.2L capacity. 120 [W] x 205 [H] x 70mm [D]



Sensor Liquid Soap Sanitiser Dispenser

B2012-MBLK

Type #304 stainless steel, Matte Black finish. Sensor operated. 850ml capacity. Dispenses a wide range of liquid soaps and sanitisers. 108 [W] x 268 [H] x 107mm [D]



Recessed Hand Dryer

RBA7740-777-015

Type #304 stainless steel, Matte Black finish. Quiet dryer, only 70dBa. 17 second dry time. 300 [W] x 610 [H] x 100mm [RD]



Bobrick TrimlineSeries™ Towel & Waste | Mid

B38034-MBLK

Type #304 stainless steel, Matte Black finish. 600 C-fold or 800 multifold capacity. 14.4L waste capacity. Includes TowelMate® to reduce paper waste by up to 20%. 330 [W] x 1400 [H] x 92mm [RD]



Bobrick TrimlineSeries™ Towel & Waste | Small

B36903-MBLK

Type #304 stainless steel, Matte Black finish. 300 C-fold or 400 multifold capacity. 6L waste capacity. Includes TowelMate® to reduce paper waste by up to 20%. 330 [W] x 790 [H] x 90mm [RD]



Paper Towel Dispenser

RBA7742-777-003

Type #304 stainless steel, Matte Black finish. 400 C-fold or 525 multifold capacity. Hemmed opening for added safety. 280 [W] x 370 [H] x 105mm [D]



Double Toilet Roll Holder

RBA7740-777-018

Type #304 stainless steel, Matte Black finish. Concealed fixing plates for added vandal resistance. 315 [W] x 155 [H] x 120mm [D]



Jumbo Toilet Roll Holder

RBA7742-777-004

Type #304 stainless steel, Matte Black finish. Heavy-duty steel mounting plate for extra durability. Holds 1 jumbo toilet roll up to 255mm dia. Rounded serration for added safety. 275 [dia.] x 122mm [D]



äska Robe Hook

RBA1643-300

Heavy-duty brass, Matte Black finish. Dual fixing points for durability. Radiused corners and edges to minimise catching. 21 [W] x 65 [H] x 30mm [D]



Raffaello Straight Rail

RBA4600-018 | 366mm
RBA4600-028 | 516mm
RBA4600-038 | 666mm
RBA4600-048 | 816mm
RBA4600-058 | 1116mm
RBA4600-068 | 1029mm

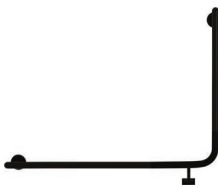
Type #304 stainless steel, Matte Black antibacterial finish. Rated to 150kg. Also available in chrome and white. [Length] x 32mm [dia.]



Raffaello 90° Ambulant Grab Rail

RBA4601-018

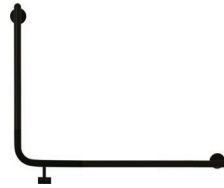
Type #304 stainless steel, Matte Black antibacterial finish. Unit is ambidextrous, allowing installation as LH or RH rail. Also available in chrome and white. 450 [W] x 450mm [H]



Raffaello 90° Accessible Grab Rail | LH

RBA4601-178

Type #304 stainless steel, Matte Black antibacterial finish. Rated to 150kg. Also available in chrome and white. 950 [W] x 742mm [H]



Raffaello 90° Accessible Grab Rail | RH

RBA4601-188

Type #304 stainless steel, Matte Black antibacterial finish. Rated to 150kg. Also available in chrome and white. 950 [W] x 742mm [H]



Accessible Backrest

RBA4150-102

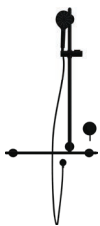
Type #304 stainless steel frame, Matte Black finish. White polyurethane backrest pad. Site adjustable. 607 [W] x 164 [H] x 458mm [D] max



Raffaello Drop Down Rail

RBA4603-098

Type #304 stainless steel, Matte Black antibacterial finish. Rails fold up when not in use. Available in chrome. 95 [W] x 170 [H] x 600mm [D]



5 Star Raffaello Shower T-Rail Kit

RBA4604-068 | Kit only
RBA4605-068 | w/ Mixer

Type #304 stainless steel, Matte Black antibacterial finish rail. 6 LPM, 5 Star WELS handset. Modular design allows rail to be positioned as LH, RH or centred. Also available in chrome. 666 [W] x 1090mm [H]



äska Shower Mixer

RBA1110-643 | Matte Black

DZR brass electroplated finish. Dual intuitive temperature indicators. Radiused corners and edges to minimise catching. 115 [dia.] x 109mm [D]



Shower Curtain Track Kit

RBA4177-561 | Track only
RBA4177-568 | Track w/ Curtain

25 [H] x 20mm [D] Anodised aluminium track in Matte Black. 1000mm ceiling support. Fully adjustable. Includes hooks and optional weighted taffeta shower curtain. 1635 [W] x 1635mm [D]



Folding Shower Seat

RBA4157-777-004

Stainless steel frame and brackets. Self-draining solid black phenolic seat. Certified low VOC. 960mm [W] x 355mm [D]

bobrick *fino* collection



Fino Collection Hand Dryer

B7179 | Satin Finish
B7179-MBLK | Matte Black

Seam welded type #304 stainless steel. Ultra-efficient high speed 200W operation. Under 12 second dry time. Available in PVD and custom finishes. 297 [W] x 342 [H] x 100mm [D]



Fino Collection Paper Towel Dispenser

B9262 | Satin Finish
B9262-MBLK | Matte Black

Seam welded type #304 stainless steel. 400 C-fold or 525 multifold paper towels. Includes TowelMate® to reduce paper waste by up to 20%. Available in PVD and custom finishes. 297 [W] x 343 [H] x 100mm [D]



Fino Collection Jumbo Toilet Roll Holder

B9890 | Satin Finish
B9890-MBLK | Matte Black

Seam welded type #304 stainless steel. 1 jumbo roll up to 255mm. Available in PVD and custom finishes. 297 [W] x 330 [H] x 128mm [D]



Fino Collection Waste Bin

B9279 | Satin Finish
B9279-MBLK | Matte Black

Seam welded type #304 stainless steel. 120L waste capacity. Available in PVD and custom finishes. 297 [W] x 607 [H] x 157mm [D]



Fino Collection Coat Hook

B9542 | Satin Finish
B9542-MBLK | Matte Black

Machined type #303 stainless steel. Dual fixing points for additional strength. Available in PVD and custom finishes. 34 [dia] x 64mm [D]



Fino Collection Single Toilet Roll Holder

B9543 | Satin Finish
B9543-MBLK | Matte Black

Machined type #303 stainless steel. Dual fixing points for additional strength. Available in PVD and custom finishes. 143 [W] x 34 [H] x 75mm [D]



Fino Collection Toilet Roll Holder

B9547 | Satin Finish
B9547-MBLK | Matte Black

Machined type #303 stainless steel. Dual fixing points for additional strength. Available in PVD and custom finishes. 266 [W] x 34 [H] x 75mm [D]



PVD Finishes Available

All Bobrick Fino Collection accessories are available in PVD brass, copper, bronze and black. Physical Vapour Deposition is a coating technique that vaporises a donor metal and lays a thin film of it over a recipient item. PVD coating is incredibly durable, easy to clean, and is much more environmentally friendly than traditional coating techniques.

BABY CHANGE



Koala Kare S/S Horizontal Baby Change Table

KB310-SSWM | Surface Mount
KB310-SSRE | Recessed

Type #304 stainless steel, satin finish. Microban® antimicrobial protection. Includes stainless steel bag hook.



Koala Kare S/S Vertical Baby Change Table

KB311-SSWM | Surfaced Mount
KB311-SSRE | Recessed

Type #304 stainless steel, satin finish. Microban® antimicrobial protection. Includes stainless steel bag hook.



Koala Kare S/S Baby Change Table

RBA7710-777-002 | Horizontal
RBA7710-777-004 | Vertical

Type #304 stainless steel, Matte Black finish. Includes Microban® antimicrobial protection. Includes stainless steel bag hook.



Koala Kare Designer High Chair

KB105-02 | Standard Harness
KB105-02-010 | Harness to suit AS4684

Seamless polypropylene construction. Attractive, scuff-resistant black finish. Stackable design saves on space. Standard 3-point harness included. 425 [W] x 749 [H] x 553mm [D]



Koala Kare Horizontal Baby Change Table

KB300-00 | Beige (shown)
KB300-01 | Grey
KB300-05 | White Granite

Polypropylene construction with steel chassis. Includes Microban® antimicrobial protection. 912 mm [W] x 527mm [H] in closed position.



Koala Kare Vertical Baby Change Table

KB301-00 | Beige
KB301-01 | Grey
KB301-05 | White Granite (shown)

Polypropylene construction with steel chassis. Includes Microban® antimicrobial protection. 527 [W] x 911mm [H] in closed position.



Koala Kare Horizontal Baby Change Table Stainless Veneer

KB300-01SS | Grey (shown)
KB300-05SS | White Granite

Polypropylene construction with steel chassis and veneer. Includes Microban® antimicrobial protection. Includes stainless steel bag hook. 912 [W] x 527mm [H] in closed position.



Koala Kare Vertical Baby Change Table Stainless Veneer

KB301-01SS | Grey
KB301-05SS | White Granite (shown)

Polypropylene construction with steel chassis and veneer. Includes Microban® antimicrobial protection. Includes stainless steel bag hook. 527 [W] x 911mm [H] in closed position.

ACCESSIBLE



Straight Grab Rail



RBA4000-030 | 300mm
RBA4000-045 | 450mm
RBA4000-060 | 600mm
RBA4000-070 | 700mm
RBA4000-090 | 900mm
RBA4000-100 | 1000mm

Type #304 stainless steel, satin finish. Additional sizes available on request. Concealed fixings. 32mm [dia.]



Steri+Shield™ Available

Not just a simple barrier. Available on all RBA Modular Grab Rails, Steri+Shield™ is a protective hygienic barrier that limits the build-up of soap and grime and actively inhibits microbial growth.

See the full range at rba.com.au/steri-shield

90° Ambulant Grab Rail



RBA4090-450

Type #304 stainless steel, satin finish. Unit is ambidextrous, allowing installation as LH or RH rail. RBA recommends ordering two for ambulant installations. 450 [W] x 450mm [H]

90° Accessible Grab Rail



RBA4090-901 | LH (shown)
RBA4090-911 | RH

Type #304 stainless steel, satin finish. To be used in conjunction with RBA4000-045. 950 [W] x 700mm [H]

90° Wraparound Grab Rail & Backrest Kit



RBA4150-229 | RH (shown)
RBA4150-230 | LH

Type #304 stainless steel, satin finish. White polyurethane backrest pad. Backrest is site adjustable. 992 [W] x 670 [H] x 1050mm [D]

90° Accessible + 450mm Straight Rail Kit



RBA4090-345 | LH (shown)
RBA4090-346 | RH

Type #304 stainless steel, satin finish. Accessible Rail: 950 [W] x 700mm [H] Straight Rail: 450mm [W]

40° Ambulant Grab Rail



RBA4040-001 | LH (shown)
RBA4040-002 | RH

Type #304 stainless steel, satin finish. RBA recommends ordering both LH and RH for ambulant installations. 986 [W] x 450mm [H]

40° Accessible Grab Rail



RBA4040-800 | LH (shown)
RBA4040-810 | RH

Type #304 stainless steel, satin finish. To be used in conjunction with RBA4000-045. 1383 [W] x 450mm [H]



Accessible Backrest

RBA4150-101

Type #304 stainless steel, satin finish. White polyurethane backrest pad. Site adjustable. 607 [W] x 164 [H] x 458mm [D] max



Modular Shower T-Rail

RBA4110-924

Type #304 stainless steel, satin finish. Modular design allows rail to be positioned as LH, RH or centred. 700 [W] x 1096mm [H]



5 Star Modular Shower T-Rail Kit

RBA4110-938

Type #304 stainless steel, satin finish. 6 LPM, 5 Star WELS chrome handset. Modular design allows rail to be positioned as LH, RH or centred. 700 [W] x 1096mm [H]



5 Star Modular Shower T-Rail Kit & Mixer

RBA4110-952

Type #304 stainless steel, satin finish. 6 LPM, 5 Star WELS chrome handset. Electroplated chrome mixer. Modular design allows rail to be positioned as LH, RH or centred. 700 [W] x 1096mm [H]



Shower Curtain Track Kit

RBA4177-128 | 1200mm²
RBA4177-168 | 1635mm²

25 [H] x 20mm [D] Anodised aluminium track. 1000mm ceiling support. Fully adjustable. Includes hooks and weighted taffeta shower curtain.



Shower Curtain Rail

RBA4171-100 | Rail only
RBA4171-101 | Rail, Curtain & Hooks

Type #304 stainless steel, satin finish. Fully adjustable. -101 includes stainless steel hooks and vinyl shower curtain. 1635 [W] x 1000 [H] x 1500mm [D]



Bobrick Accessible Folding Shower Seat

B819687

Solid white phenolic seat. Type #304 stainless steel, satin finish frame and brackets. Certified low VOC. 960 [W] x 355mm [D]



Folding Shower Seat with Legs

RBA4157-777-003

Self-draining phenolic seat. Type #304 stainless steel, satin finish frame. Support legs fold away when not in use. 960 [W] x 480 [H] x 400mm [D]



enda Accessible Shelf

RBA1622-106

Heavy-duty brass, chrome finish. Frosted acrylic shelf. Radiused corners and edges to minimise catching. 395 [W] x 29 [H] x 147mm [D]



Bobrick Accessible Stainless Steel Shelf

B295x14

Type #304 stainless steel, satin finish. Edge is hemmed for safe handling. 355 [W] x 75 [H] x 125mm [D]



Bobrick Accessible Mirror | Premium

B2908 1639

Type #304 stainless steel angle frame, satin finish. Tempered safety glass on shock absorbent padding. 15 year warranty against silver spoilage.
406 [W] x 991mm [H]



Bobrick Accessible Mirror | Budget

B1658 1639

Type #304 stainless steel channel frame, bright polish. Tempered safety glass on shock absorbent padding. 15 year warranty against silver spoilage.
406 [W] x 991mm [H]



Curvilinear™ Basin

RBA8889-181 | Basin only
RBA8889-182 | Basin & Trap Cover
RBA8889-186 | Basin, Trap Cover & Tap

1.5-2mm type #304 stainless steel, satin finish. Seamless construction for lasting appeal. Vandal resistant enclosed trap cover. Double, triple and quadruple basins available.
483 [W] x 353 [H] x 544mm [D]



Inox Lead-Free Time-Flow Tap

RBA1083-600 | Bright Polish
RBA1083-607 | Satin Finish

Type #304 stainless steel tap body. Self-closing, water saving valve. 4-10s runtime. 6 Star WELS rating [5 LPM] 100% lead-free waterpath. 1.7 LPM models available on request.
46 [W] x 118 [H] x 166mm [D]



Bobrick Contura™ Paper Towel & Waste

B4369 | Recessed [100mm RD]
B43699 | Surface Mount

Type #304 stainless steel, satin finish. 350 C-fold, 475 multifold paper towels. 11.4L waste capacity. Radius on doors and corners to match other Contura™ products. Includes TowelMate® and LinerMate®.
325 [W] x 710 [H]



Bobrick Contura™ Paper Towel Dispenser

B4262

Type #304 stainless steel, satin finish. 400 C-fold or 525 multifold paper towels. Radius on doors and corners to match other Contura™ products. Includes TowelMate® to reduce paper waste by up to 20%.
275 [W] x 345 [H] x 125mm [D]



Bobrick TrimlineSeries™ 3-in-1 Towel, Waste & Dryer

B38030 | Recessed [100mm RD]
B380309 | Surface Mount

Type #304 stainless steel, satin finish. 450 C-fold, 600 multifold paper towels. 13.7L waste capacity. Dryer, paper and waste bin all accessible from single location. Includes TowelMate® to reduce paper waste by up to 20%.
396 [W] x 1450 [H]



Bobrick TrimlineSeries™ Paper Towel & Waste

B36903 | Recessed [95mm RD]
B369039 | Surface Mount

Type #304 stainless steel, satin finish. 300 C-fold or 400 multifold paper towels. 6L waste capacity. Includes TowelMate® to reduce paper waste by up to 20%.
330 [W] x 790 [H]



Bobrick Contura™ Soap Dispenser

B4112 | Satin Finish
B4112-316 | #316 Stainless Steel
B4112-HP | Bright Polish

Type #304 stainless steel. Radius on front and corners to match other Contura™ products. Vandal resistant valve can't be removed from the front. Resistant to antibacterial soaps. 1.2L capacity.
180 [W] x 155 [H] x 85mm [D]



Sensor Sanitiser and Soap Dispenser

B2012 | Liquid (shown)
B2013 | Foam

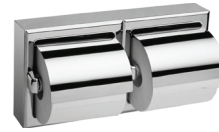
Type #304 stainless steel, satin finish. Touch-free operation. Corrosion resistant valve dispenses a wide range of soaps and sanitisers. 800-850ml capacity.
108 [W] x 242 [H] x 107mm [D]



Bobrick Hooded Single Toilet Roll Holder

B6699 | Bright Polish
B66997 | Satin Finish

Type #304 stainless steel. Single roll capacity. Theft-resistant spindles available on request. 155 [W] x 155 [H] x 120mm [D]



Bobrick Hooded Double Toilet Roll Holder

B6999 | Bright Polish
B69997 | Satin Finish

Type #304 stainless steel. Double roll capacity. Theft-resistant spindles available on request. 315 [W] x 155 [H] x 120mm [D]



öken Single Toilet Roll Holder

RBA1631-112

Heavy-duty brass, chrome finish. Dual fixing points for durability. Radiused corners and edges to minimise catching. 165 [W] x 25 [H] x 60mm [D]



öken Double Toilet Roll Holder

RBA1631-122

Heavy-duty brass, chrome finish. Dual fixing points for durability. Radiused corners and edges to minimise catching. 300 [W] x 25 [H] x 60mm [D]



Toilet Tactile Sign

RBA4330-001 | Male
RBA4330-002 | Female
RBA4330-006 | Unisex

Type #316 marine-grade stainless steel. Vandal and fade resistant. Also available in polycarbonate. 200 [W] x 200 [H] x 1.6mm



Accessible Toilet Tactile Sign

RBA4330-020 | LH
RBA4330-021 | RH

Type #316 marine-grade stainless steel. Vandal and fade resistant. Also available in polycarbonate. 250 [W] x 200 [H] x 1.6mm



Accessible Toilet & Shower Tactile Sign

RBA4330-018 | LH
RBA4330-019 | RH

Type #316 marine-grade stainless steel. Vandal and fade resistant. Also available in polycarbonate. 300 [W] x 200 [H] x 1.6mm



Accessible Toilet & Baby Change Tactile Sign

RBA4330-024 | LH
RBA4330-025 | RH

Type #316 marine-grade stainless steel. Vandal and fade resistant. Also available in polycarbonate. 300 [W] x 200 [H] x 1.6mm



Ambulant Toilet Tactile Sign

RBA4330-022 | Male
RBA4330-023 | Female
RBA4330-026 | Unisex

Type #316 marine-grade stainless steel. Vandal and fade resistant. Also available in polycarbonate. 250 [W] x 200 [H] x 1.6mm



Toilet & Ambulant Toilet Tactile Sign

RBA4330-029 | Male
RBA4330-030 | Female

Type #316 marine-grade stainless steel. Vandal and fade resistant. Also available in polycarbonate. 250 [W] x 200 [H] x 1.6mm

WASHROOM ACCESSORIES



Bobrick Contura™ Towel & Waste | Large

B43944 | Recessed [100mm RD]
B43949 | Surface Mount

Type #304 stainless steel, satin finish. 600 C-fold, 800 multifold paper towels. 56.8L waste capacity. Radius on doors and corners to match other Contura™ products. Includes TowelMate® and LinerMate®. 445 [W] x 1430mm [H]



Bobrick Contura™ Towel & Waste | Mid

B4369 | Recessed [100mm RD]
B43699 | Surface Mount

Type #304 stainless steel, satin finish. 350 C-fold, 475 multifold paper towels. 11.4L waste capacity. Radius on doors and corners to match other Contura™ products. Includes TowelMate® and LinerMate®. 325 [W] x 710mm [H]



Bobrick TrimlineSeries™ 3-in-1 Towel, Waste & Dryer

B38030 | Recessed [100mm RD]
B380309 | Surface Mount

Type #304 stainless steel, satin finish. 450 C-fold, 600 multifold paper towels. 13.7L waste capacity. Dryer, paper and waste bin all accessible from single location. Includes TowelMate® to reduce paper waste by up to 20%. 396 [W] x 1450mm [H]



Bobrick TrimlineSeries™ 3-in-1 Towel, Waste & Dryer

B38031 | Recessed [203mm RD]
B380319 | Surface Mount

Type #304 stainless steel, satin finish. 450 C-fold, 600 multifold paper towels. 27.4L waste capacity. Dryer, paper and waste bin all accessible from single location. Includes TowelMate® to reduce paper waste by up to 20%. 396 [W] x 1449mm [H]



Bobrick TrimlineSeries™ 3-in-1 Towel, Waste & Dryer

B38033 | Recessed [145mm RD]
B380339 | Surface Mount

Type #304 stainless steel, satin finish. 12.5L waste capacity. Includes TowelMate® to reduce paper waste by up to 20%. 385 [W] x 1415mm [H]



Bobrick TrimlineSeries™ Towel & Waste | Large

B39003 | Recessed [200mm RD]
B390039 | Surface Mount

Type #304 stainless steel, satin finish. 45.4L waste capacity. 600 C-fold, 800 multifold or 1100 single fold paper towels. Includes TowelMate® to reduce paper waste by up to 20%. Also available in Matte Black. 435 [W] x 1420mm [H]



Bobrick TrimlineSeries™ Towel & Waste | Mid

B3803 | Recessed [146mm RD]
B38039 | Surface Mount

Type #304 stainless steel, satin finish. 24L waste capacity. 600 C-fold, 800 multi-fold paper towels. Includes TowelMate® to reduce paper waste by up to 20%. Also available in Matte Black. 330 [W] x 1400mm [H]



Bobrick TrimlineSeries™ Towel & Waste | Mid

B38034 | Recessed [95mm RD]
B380349 | Surface Mount

Type #304 stainless steel, satin finish. 14.4L waste capacity. 600 C-fold, 800 multi-fold paper towels. Includes TowelMate® to reduce paper waste by up to 20%. Also available in Matte Black. 330 [W] x 1400mm [H]



Bobrick TrimlineSeries™ Towel & Waste | Small

B36903 | Recessed [95mm RD]
B369039 | Surface Mount

Type #304 stainless steel, satin finish. 6L waste capacity. 300 C-fold or 400 multifold paper towel. Includes TowelMate® to reduce paper waste by up to 20%. 330 [W] x 790mm [H]



Bobrick 3-in-1 Towel, Waste & Dryer

B815969 | Recessed [145mm RD]
B8159699 | Surface Mount

Type #304 stainless steel, satin finish. 12.5L waste capacity. Includes TowelMate® to reduce paper waste by up to 20%. 330 [W] x 1829mm [H]

NOTE: Full-height floor-to-ceiling combination cabinets are available on request!



Bobrick PureDri Hand Dryer & Air/Hand Sanitiser

B9100

Type #304 stainless steel, satin finish. Industry leading 0.2kW power usage. Delivers <20s dry time followed by 6s sanitising blast. Provides continuous active air purification for 20m². Safely neutralises up to 98.11% of microorganisms. 266 [W] x 817 [H] x 102mm [D]



Bobrick InstaDry™ Hand Dryer

B7125

Type #304 stainless steel, satin finish. Industry leading 0.2kW power usage. High-speed, quick drying action. 5 year warranty. 319 [W] x 274 [H] x 98mm [D]



Bobrick TrimlineSeries™ Recessed Hand Dryer

B3725 | Satin Finish
RBA7740-777-015 | Matte Black

Type #304 stainless steel. Efficient 1.0kW power usage. Quiet ~70dB(A) operation. 5 year warranty. 300 [W] x 610 [H] x 100mm [RD]



Bobrick TerraDry™ Hand Dryer

B7180E | White Gloss
B7188E | Chrome

Aluminium die-cast cover. Efficient 1.0kW power usage. Quiet ~70dB(A) operation. 10 year warranty. 259 [W] x 351 [H] x 100mm [D]



Bobrick Elan™ Hand Dryer

B715E

Type #304 stainless steel, satin finish. Suitable for accessible installations. Vandal resistant construction. 5 year warranty. 295 [W] x 280 [H] x 140mm [D]



Bobrick Contura™ Paper Towel Dispenser

B4262

Type #304 stainless steel, satin finish. 400 C-fold or 525 multifold paper towels. Radius on doors and corners to match other Contura™ products. Includes TowelMate® to reduce paper waste by up to 20%. 275 [W] x 345 [H] x 125mm [D]



Bobrick TrimlineSeries™ Paper Towel Dispenser

B359033 | Recessed [95mm RD]
B359039 | Surface Mount

Type #304 stainless steel, satin finish. 300 C-fold or 400 multifold paper towel. Includes TowelMate® to reduce paper waste by up to 20%. Also available in Matte Black. 330 [W] x 480mm [H]



Bobrick ClassicSeries® Paper Towel Dispenser

B262 | Tumbler Lock (shown)
B2620 | Knob Latch

Type #304 stainless steel, satin finish. 400 C-fold or 525 multifold paper towel. Full-length piano-wire hinge for added strength. 275 [W] x 355 [H] x 100mm [D]



Bobrick Countertop Paper Towel Dispenser

B526

Type #304 stainless steel, satin finish. 300 C-fold or multifold paper towel. Intuitive, front-loaded design. Spring-loaded tray expands out when filled. 325 [W] x 155 [H] x 440mm [max. D]



Bobrick In-Wall Paper Towel Dispenser

B318

Type #304 stainless steel, satin finish. For concealing in-wall, behind mirror or within cabinetry. Bottom loaded design allows refilling without front access. 290 [W] x 455 [H] x 114mm [min. RD]*

*See technical datasheet for more information



Bobrick Contura™ Soap Dispenser

B4112 | Satin Finish
B4112-316 | #316 Stainless Steel
B4112-HP | Bright Polish

Type #304 stainless steel. Radius on front and corners to match other Contura™ products. Vandal resistant valve can't be removed from the front. Resistant to antibacterial soaps. 1.2L capacity. 180 [W] x 155 [H] x 85mm [D]



Bobrick TrimlineSeries™ Soap Dispenser

B26617 | Liquid
B26637 | Foam

Type #304 stainless steel, satin finish. Capable of using soap cartridges or bulk refill. 1L capacity. 96 [W] x 336 [H] x 153mm [D]



Bobrick Vertical Soap Dispenser

B2111

Type #304 stainless steel, satin finish. Corrosion resistant valve dispenses most commercially marketed soaps. Lockable reservoir for added vandal resistance. 1.2L capacity. 120 [W] x 205 [H] x 90mm [D]



Bobrick Horizontal Soap Dispenser

B2112

Type #304 stainless steel, satin finish. Corrosion resistant valve dispenses most commercially marketed soaps. Lockable reservoir for added vandal resistance. 1.2L capacity. 205 [W] x 120 [H] x 90mm [D]



Bobrick Sensor Sanitiser and Soap Dispenser

B2012 | Liquid
B2013 | Foam (shown)

Type #304 stainless steel, satin finish. Sensor operation limits cross-contamination. Corrosion resistant valve dispenses a wide range of soaps and sanitisers. 800-850ml capacity. 108 [W] x 242 [H] x 107mm [D]



Bobrick Basin Mounted Soap Dispenser

B822 | Liquid
B823 | Foam

Type #304 stainless steel, bright polish spout and escutcheon. 100mm spout hangs over basin, reducing mess. Top or bottom filling for ease of maintenance. 1L capacity. Also available in other capacities on request.



Bobrick Sureflo® Sensor Soap Dispenser

B824 | Liquid
B828 | Foam

Durable ABS plastic, chrome plated. Sensor operation limits cross-contamination. Top-filling with integrated spout for ease of maintenance. 1L capacity.



Bobrick Multi-Feed Sensor Soap Dispenser

B820-258 | Liquid Dispenser
B820-248 | Foam Dispenser
B820 | Reservoir

Type #304 stainless steel, bright polish. Designed for high-traffic facilities. Sensor operation limits cross-contamination. Accessible benchtop fill-port lights up when soap level low. 6L B820 reservoir can feed up to six dispensers.



ënda Soap Dish

RBA1622-101

Type #304 stainless steel, satin finish. Dual fixing points for durability. Radiused corners and edges to minimise catching. 110 [W] x 38 [H] x 110mm [D]



Bobrick Soap Dish

B680 | Bright Polish
B6807 | Satin Finish

Type #304 stainless steel, bright polish. Heavy-duty, 1.6mm stainless mounting bracket. Integral holes for water drainage. Budget models also available on request. 110 [W] x 50 [H] x 85mm [D]



Bobrick Safety Glass Mirror | Premium

B2908 1830 | 460 [W] x 760mm [H]
B2908 1836 | 460 [W] x 910mm [H]
B2908 2436 | 610 [W] x 910mm [H]
B2908 2448 | 610 [W] x 1220mm [H]

Type #304 stainless steel angle frame, satin finish. Frame corners are welded, ground and polished smooth for a superior finish. Tempered safety glass on shock absorbent padding. 15 year warranty against silver spoilage



Bobrick Safety Glass Mirror | Budget

B1658 1836 | 460 [W] x 910mm [H]
B1658 2430 | 610 [W] x 760mm [H]
B1658 2436 | 610 [W] x 910mm [H]
B1658 2448 | 610 [W] x 1220mm [H]

Type #304 stainless steel channel frame, bright polish. One piece frame with 90° mitred corners. Tempered safety glass on shock absorbent padding. 15 year warranty against silver spoilage.



Bobrick Contura™ Double Toilet Roll Holder

B4288

Type #304 stainless steel, satin finish. Radius on front and corners to match other Contura™ products. Theft resistant spindles and automatic reload.
 155 [W] x 280 [H] x 150mm [D]



Bobrick Double Toilet Roll Holder

B2888

Type #304 stainless steel, satin finish. Equipped with tumbler lock keyed like other Bobrick accessories. Theft resistant spindles and automatic reload.
 155 [W] x 280 [H] x 150mm [D]



Bobrick Triple Toilet Roll Holder

B27313

Type #304 stainless steel, satin finish. Equipped with tumbler lock keyed like other Bobrick accessories. Suitable for up to 120mm dia. toilet rolls.
 120 [W] x 375 [H] x 125mm [D]



Bobrick Jumbo Toilet Roll Holder

B2890 | Single (shown)
B2892 | Double

Type #304 stainless steel, satin finish. Convertible to suit a wide range of toilet rolls. Equipped with tumbler lock keyed like other Bobrick accessories. Rounded serrations for added safety.



Bobrick Single Toilet Roll Holder

B685 | Bright Polish
B6857 | Satin Finish

Type #304 stainless steel. Heavy-duty 1.6mm mounting plate for extra durability. Chrome-plated plastic spindle. Budget models and/or theft-resistant spindles available on request.
 185 [W] x 50 [H] x 100mm [D]



Bobrick Double Toilet Roll Holder

B686 | Bright Polish
B6867 | Satin Finish

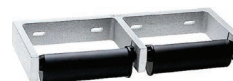
Type #304 stainless steel. Heavy-duty 1.6mm mounting plate for extra durability. Chrome-plated plastic spindle. Budget models and/or theft-resistant spindles available on request.
 320 [W] x 50 [H] x 100mm [D]



Bobrick Single Aluminium Toilet Roll Holder

B2730 | Standard Delivery
B273 | Controlled Delivery

Durable cast aluminium, satin finish. Theft-resistant spindles supplied as standard. Controlled delivery only allows 3/4 revolution of spindle to minimise waste.
 165 [W] x 40 [H] x 125mm [D]



Bobrick Double Aluminium Toilet Roll Holder

B2740 | Standard Delivery
B274 | Controlled Delivery

Durable cast aluminium, satin finish. Theft-resistant spindles supplied as standard. Controlled delivery only allows 3/4 revolution of spindle to minimise waste.
 320 [W] x 40 [H] x 125mm [D]



ända Single Toilet Roll Holder with Phone Shelf

RBA1622-105

Heavy-duty brass, chrome finish. Dual fixing points for durability. Radiused corners and edges to minimise catching. 140 [W] x 81 [H] x 74mm [D]



öken Single Toilet Roll Holder #1

RBA1631-102

Heavy-duty brass, chrome finish. Dual fixing points for durability. Radiused corners and edges to minimise catching. 146 [W] x 22 [H] x 98mm [D]



öken Single Toilet Roll Holder #2

RBA1631-112

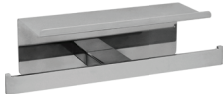
Heavy-duty brass, chrome finish. Dual fixing points for durability. Radiused corners and edges to minimise catching. 165 [W] x 25 [H] x 60mm [D]



öken Towel Rail

RBA1631-104

Heavy-duty brass, chrome finish. Dual fixing points for durability. Radiused corners and edges to minimise catching. 600 [W] x 22 [H] x 50mm [D]



äska Double Toilet Roll Holder with Shelf

RBA1643-142

Heavy-duty brass, chrome finish. Dual fixing points for durability. Radiused corners and edges to minimise catching. 290 [W] x 72 [H] x 87mm [D]



äska Single Toilet Roll Holder #1

RBA1643-102

Heavy-duty brass, chrome finish. Dual fixing points for durability. Radiused corners and edges to minimise catching. 138 [W] x 22 [H] x 95mm [D]



äska Single Toilet Roll Holder #2

RBA1643-112

Heavy-duty brass, chrome finish. Dual fixing points for durability. Radiused corners and edges to minimise catching. 165 [W] x 25 [H] x 60mm [D]



äska Towel Rail

RBA1631-114

Heavy-duty brass, chrome finish. Dual fixing points for durability. Radiused corners and edges to minimise catching. 600 [W] x 22 [H] x 99mm [D]



ända Towel Rail

RBA1622-108 | Single (shown)

RBA1622-109 | Double

Heavy-duty brass, chrome finish. Dual fixing points for durability. Radiused corners and edges to minimise catching



Bobrick Cubicle Towel Rail

B545x18 | 460mm [W]

B545x24 | 610mm [W]

Type #304 stainless steel, satin finish. Threaded flanges conceal heavy-duty mounting bracket. Also available in bright polish. Various [W] x 49 [H] x 95mm [D]



äska Robe Hook

RBA1643-100 | Chrome
RBA1643-300 | Matte Black

Heavy-duty brass. Dual fixing points for durability. Radiused corners and edges to minimise catching. 21 [W] x 65 [H] x 30mm [D]



Bobrick Coat Hook with Bumper

B212

Durable cast aluminium, satin finish. Hard rubber bumper secured with drive-screw. Protects wall or partition surfaces. 40 [W] x 50 [H] x 95mm [D]



Bobrick Heavy-Duty Robe Hook

B211 | Standard Fixings
B2116 | Concealed Fixings

Single piece brass casting, nickel-plated satin finish. Withstands 136kg downward pull when installed properly. Available with concealed wall plate for vandal resistance. 70 [dia.] x 85mm [D]



Bobrick Cubicle Hook

B542 | Satin Finish
B5426 | Bright Polish

Type #304 machined stainless steel. Threaded flange conceals mounting plate. 49 [dia.] x 33mm [D]



Bobrick Vertical Double Hook

B682 | Bright Polish
B6827 | Satin Finish

Type #304 stainless steel, satin finish. 1.6mm stainless steel wall plate for added strength. 25 [W] x 165 [H] x 80mm [D]



Bobrick Horizontal Double Hook

B672 | Bright Polish
B6727 | Satin Finish

Type #304 stainless steel, satin finish. 1.6mm stainless steel wall plate for added strength. 105 [W] x 50 [H] x 60mm [D]

PUBLIC AMENITIES



Acorn Accessible Toilet Suite

RBA8847-428

1.5-1.9mm Type #304 stainless steel, satin finish. 6/3L flush, 3 Star WELS rated. P-Trap, supplied with S-Trap converter. Front or rear fix. Includes security toilet seat suitable for AS1428.1. 480 [W] x 880 [H] x 800mm [D]



Acorn Ambulant Toilet Suite

RBA8847-156 | S-Trap
RBA8847-157 | P-Trap

1.6-1.9mm Type #304 stainless steel, satin finish. 6/3L flush, 3 Star WELS rated. Front fix only. Includes security toilet seat and lid suitable for AS1428.1. 520 [W] x 1082 [H] x 659mm [D]



Acorn Accessible Toilet Pan

RBA8851-428

1.5-1.9mm Type #304 stainless steel, satin finish. 6/3L flush, 3 Star WELS rated. P-Trap, supplied with S-Trap converter. Front or rear fix. Also available in #316 S/S or coloured Enviro-Glaze®. 355 [W] x 460 [H] x 800mm [D]



Acorn Ambulant Toilet Pan

RBA8851-156 | S-Trap
RBA8841-156 | P-Trap

1.5-1.9mm Type #304 stainless steel, satin finish. 5.6/2.6L flush, 4 Star WELS rated. Front fix only. Also available in #316 S/S or coloured Enviro-Glaze®. 355 [W] x 495 [H] x 660mm [D]



Accessible Stainless Toilet Suite

RBA5600-001-850 | P-Trap
RBA5600-001-851 | S-Trap

1.2-2mm Type #304 stainless steel, satin finish. Water efficient 4.5L/3L flush, 4 Star WELS rated. Includes security toilet seat suitable for ASI428.1. 475 [W] x 910 [H] x 800mm [D]



Accessible Stainless Toilet Pan

RBA5600-001-800 | P-Trap
RBA5600-001-801 | S-Trap

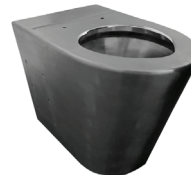
1.2-2mm Type #304 stainless steel, satin finish. Water efficient 4.5L/3L flush, 4 Star WELS rated. Includes security toilet seat suitable for ASI428.1. 370 [W] x 460 [H] x 800mm [D]



Ambulant Stainless Toilet Pan

RBA5600-001-600 | P-Trap
RBA5600-001-601 | S-Trap

1.2-2mm Type #304 stainless steel, satin finish. Water efficient 4.5L/3L flush, 4 Star WELS rated. Includes security toilet seat and lid suitable for ASI428.1. 370 [W] x 460 [H] x 645mm [D]



Standard Stainless Toilet Pan

RBA5600-001-602 | P-Trap
RBA5600-001-603 | S-Trap

1.2-2mm Type #304 stainless steel, satin finish. Water efficient 4.5L/3L flush, 4 Star WELS rated. 370 [W] x 435 [H] x 645mm [D]



Acorn Curvalinear™ Basin, Trap & Tap

RBA8889-181 | Basin only
RBA8889-182 | Basin & Trap Cover
RBA8889-186 | Basin, Trap Cover & Tap

1.5-2mm type #304 stainless steel, satin finish. Seamless construction for lasting appeal. Vandal resistant enclosed trap cover. Double, triple and quadruple basins available. 483 [W] x 353 [H] x 544mm [D]



Acorn Benefit Basin

RBA8867-100 | Basin only
RBA8867-186 | Basin & Tap

1.2mm type #304 stainless steel, satin finish. Fully enclosed trap for vandal resistance. Optional 6 Star WELS lead-free tapware. 457 [W] x 380 [H] x 470mm [D]



Acorn Economy Basin

RBA8864-100

1.3mm type #304 stainless steel, satin finish. Durable, vandal resistant design. Suitable for ASI428.1. 600 [W] x 150 [H] x 420mm [D]



Acorn Euro Basin

RBA8888-100

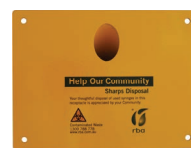
1.6-3mm type #304 stainless steel, satin finish. Hygienic vandal resistant design. Fully enclosed trap. No gaps or crevices. 395 [W] x 287 [H] x 408mm [D]



Sharps Disposal Box

RBA7400-100 | Safety Yellow
RBA7400-150 | Satin Finish

1.6mm mild or type #304 stainless steel. Vandal resistant, lockable design. Includes directional sticker and 1L disposable container. 108 [W] x 274 [H] x 116mm [D]



Sharps Chute

RBA7400-777-003 | Safety Yellow
RBA7400-777-004 | Satin Finish

3mm type #304 stainless steel, satin finish. Includes directional sticker and 1L disposable container. 200 [W] x 150 [H] x 144mm [D]

PLUMBING & SHOWERS



Lead-Free Pre-Plumbed Trough and Tapware

RBA5503-series | LH Drain
RBA5504-Series | RH Drain

1.2mm type #304 stainless steel, satin finish. Available in a wide range of widths to suit up to 6 users. Pre-plumbed with stainless steel waterpath and tapware. 6 Star WELS, 5 LPM tapware. Various [W] x 356 [H] x 370mm [D]



Stainless Steel Wash Trough

RBA5501-Series | LH Drain
RBA5502-Series | RH Drain

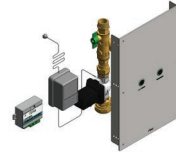
1.2mm type #304 stainless steel, satin finish. Available in a wide range of widths to suit up to 6 users. Suitable for basin-mount or wall-mount tapware or bubblers. Various [W] x 356 [H] x 370mm [D]



Nautilus Electronic Dual Flush Valve

RBA1882-100-000-series

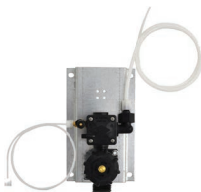
Supplied with integrated isolating ball valve and strainer, flush valve, touch-activated piezo buttons and vacuum breaker. Adjustable to 4 Star 4.5/3L or 3 Star 6/3L flush volumes. Available with a wide range of mounting plates to suit project.



Wave-N-Go™ Touch Free Dual Flush Valve

RBA1882-100-500-series

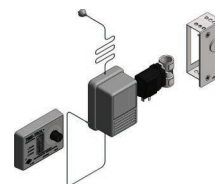
Wave-n-Go™ Touch-Free sensor activated. Supplied with integrated isolating ball valve and strainer, flush valve and vacuum breaker. Adjustable to 4 Star 4.5/3L or 3 Star 6/3L flush volumes. Available with a wide range of mounting plates to suit project.



AirTrol Pneumatic Valve

RBA8000-series

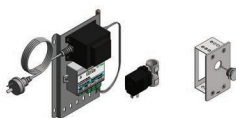
Timed-flow valve with site adjustable run time, 5-60s. No electricity needed, perfect for remote applications. To suit showers, basins, bubblers and more. Multiple outlet and actuation options available.



Time-Trol™ Water Management Kit

RBA8010-100 | Kit only
RBA8010-105 | Kit & Showerhead
RBA8010-106 | Kit, Showerhead & Handles

Electronic microprocessor controlled timed-flow valve. Easily adjustable profile switch, select from 12 settings which vary in run-time, lockout and cycle interrupt. Controller can be located up to 20m from the valve. Indicator lights for easy troubleshooting.



T4 Water Management Kit

RBA8013-100 | Kit only
RBA8013-101 | Kit & Showerhead

Electronic microprocessor controlled timed-flow valve. Easily adjustable dials, select from 32 pre-programmed run-time options ranging from 0.25 to 300s. Includes stainless steel piezo plate with recess box. Optional water-efficient 6 LPM showerhead available, see RBA8519-114.



Mastertrol™ Electronic Water Management

Centralise control of facility's water supply to a single device, perfect for large scale institutional and commercial projects. Each controller can manage up to 18 valves while still allowing individual remote control. Motherboard can be removed and replaced in under 3 minutes, minimising downtime.



Chronomite Instant Flow Instantaneous Hot Water Unit

Compact design to suit under bench installation. 99% energy efficient, single phase power utilising bare wire technology. Microprocessor temperature & energy regulator. Hot water in as little as 4s. Wide range of models available to suit application.



Pre-Plumbed Water Heater & TMV Box

RBAM-40-TMVB

Type #304 stainless steel, satin finish lockable mounting box. 99% energy efficient, single phase Chronomite heater. Includes a water isolation valve for easy maintenance. Perfect for AS1428.1 and applications where main water heater isn't close by. 475 [W] x 475 [H] x 80-102mm [D]



Water Saving Shower Valve

RBA1055-510 | 7-10s Runtime
RBA1055-530 | 20-30s Runtime

DZR brass, chrome plated. Self closing shower valve perfect for public washrooms. Single temperature [incl. pre-mixed] only. Self-cleaning cartridge can be installed flush to wall for ligature and vandal resistance. 70 [Dia.] x 64.5-80.5mm [D]



Coolum Commercial Showerhead

RBA8519-114

DZR brass, chrome plated. 5 Star WELS rating [5.9 LPM]. High vandal and ligature resistance. Innovative design allows front or rear fixing and for servicing without removing body from the wall. 80 [Dia.] x 60mm [D]



Coolum Commercial Shower Handle

RBA8519-115

DZR brass, chrome plated. High vandal and ligature resistance. 3 coloured temperature indicators supplied. 56 [Dia.] x 60-70mm [D]



Coolum Commercial Showerhead & Handles

RBA8519-201

DZR brass, chrome plated. 5 Star WELS rating [5.9 LPM]. High vandal and ligature resistance. Handles supplied with 3 coloured temperature indicators. Innovative showerhead design allows front or rear fixing and for servicing without removing body from the wall.



öken Shower Mixer Rectangle Plate

RBA1110-750

DZR brass, chrome plated. Dual, intuitive temperature indicators. Radiused corners and edges to minimise catching. Other handle and plate options available on request. 115 [W] x 160 [H] x 110mm [D]



öken Shower Mixer Round Plate

RBA1110-643 | Matte Black
RBA1110-650 | Chrome

DZR brass. Dual, intuitive temperature indicators. Radiused corners and edges to minimise catching. Other handle and plate options available on request. 115 [dia.] x 110mm [D]



5 Star Shower Rail Kit

RBA4110-993

Type #304 stainless steel, satin finish 900mm straight rail. 6.0 LPM, 5 Star WELS handset and hose [1.5m in length], chrome finish.



5 Star Shower Rail Kit & Mixer

RBA4110-994

Type #304 stainless steel, satin finish 900mm straight rail. 6.0 LPM, 5 Star WELS handset and hose [1.5m in length], chrome finish. DZR brass, chrome plated mixer.



Emergency Eye Wash

RBA8300-440 | Wall Mounted
RBA8300-340 | Pedestal (shown)

Type #304 stainless steel, satin finish. 300mm [dia.] bowl, stay-open ball valve and bracket. Yellow ABS Plastic eye and face spray outlet w/ integral dust covers. Push handle operation for quick activation. Supplied with universal ID sign and weekly inspection card.



Emergency Shower & Eye Wash Pedestal

RBA8302-200 | Wall Mounted
RBA8302-340 | Pedestal (shown)

Type #304 stainless steel, satin finish. 185mm [dia.] showerhead, stay-open ball valve. Pull-rod operation for quick activation. Supplied with universal ID sign and weekly inspection card.



Formatta Sensor Tap

RBA1211-600

DZR brass, chrome plated. 6 Star WELS rating [5 LPM]. Sensor activation minimises common touchpoints. Internal solenoid simplifies installation and saves on maintenance. 59 [W] x 161 [H] x 158mm [D]



Bronte Sensor Tap

RBA1321-200

Lead-free DZR brass, chrome plated. 6 Star WELS rating [6 LPM]. Sensor activation minimises common touchpoints. Internal solenoid simplifies installation and saves on maintenance. 53 [dia.] x 140 [H] x 169mm [D]



Coogee Sensor Tap Basin Mount

RBA1301-200

Lead-free DZR brass, chrome plated. 6 Star WELS rating [6 LPM]. Sensor activation minimises common touchpoints. Includes battery backup for continuous operation. 46 [dia.] x 175 [H] x 140mm [D]



Coogee Sensor Tap Wall Mount

RBA1311-200

Lead-free DZR brass, chrome plated. 6 Star WELS rating [6 LPM]. Sensor activation minimises common touchpoints. Includes battery backup for continuous operation. 60 [dia.] x 61 [H] x 199mm [D]



Inox Lead-Free Self Closing Tap

RBA1083-600 | Bright Polish
RBA1083-607 | Satin Finish

Type #304 stainless steel tap body. Self-closing, water saving valve. 4-10s runtime. 6 Star WELS rating [5 LPM]. 100% lead-free waterpath. 1.7 LPM models available on request. 52 [W] x 261 [H] x 147mm [D]



Rio Wall Mounted Self-Closing Tap

RBA1053-600
RBA1053-688 | w/ Isolation Valve

DZR brass, chrome plated. Self-closing, water saving valve. 4-10s runtime. 6 Star WELS rating [4.5 LPM]. Self-cleaning cartridge minimises maintenance. 50 [dia.] x 65 [H] x 148mm [D]



Gooseneck Self Closing Tap

RBA1047-600

DZR brass, chrome plated. Self-closing, water saving valve. 12-15s runtime. 6 Star WELS rating [5.5 LPM]. Self-cleaning cartridge minimises maintenance. 52 [dia.] x 261 [H] x 147mm [D]



Benefit Lever Self Closing Tap

RBA1015-600

DZR brass, chrome plated. Self-closing, water saving valve. 4-10s runtime. 6 Star WELS rating [4.5 LPM]. Black cover on handle for safety and luminance contrast. 44 [dia.] x 192 [H] x 123mm [D]



Rio Self-Closing Tap

RBA1044-600

DZR brass, chrome plated. Self-closing, water saving valve. 4-10s runtime. 6 Star WELS rating [4.5 LPM]. Self-cleaning cartridge minimises maintenance. 44 [dia.] x 110 [H] x 125mm [D]



Alpha Self-Closing Tap

RBA1043-600

DZR brass, chrome plated. Self-closing, water saving valve. 4-10s runtime. 6 Star WELS rating [5.5 LPM]. Self-cleaning cartridge minimises maintenance. 44 [dia.] x 93 [H] x 112mm [D]

MENTAL HEALTHCARE



Acorn Security Basin & Self-Closing Tap

RBA8880-100 | Satin Finish
RBA8880-777-002 | Enviro-Glaze® White

1.6mm Type #304 stainless steel. 6 Star WELS rating [1.5 LPM]. High vandal and ligature resistance with fully enclosed trap. Push button, self-closing spout included. 5-60s adjustable runtime. 425 [W] x 433 [H] x 355mm [D]



Coolum Commercial Showerhead & Handles

RBA8519-201

DZR brass, chrome plated. 5 Star WELS rating [5.9 LPM]. High vandal and ligature resistance. Handles supplied with 3 coloured temperature indicators. Innovative showerhead design allows front or rear fixing and for servicing without removing body from the wall.



Adjustable Ligature Resistant Hook

RBA8130-103 | Satin Finish
RBA8130-104 | Enviro-Glaze® White

2mm Type #304 stainless steel. High vandal and ligature resistance. Adjustable release range of 0-15kg. Non-ligature resistant auto-release hooks also available. 130 [W] x 130 [H] x 22mm [D]



Recessed Soap Dish

RBA8132-100 | Satin Finish
RBA8132-117 | Enviro-Glaze® White

2mm Type #304 stainless steel. High vandal and ligature resistance. Raised dimples for air circulation. Budget and rear-fix models available on request. 190 [W] x 155 [H] x 70mm [RD]



Bestcare® Ligature Resistant Vanity Shelf

RBA8121-200

1.6mm Type #304 stainless steel, Enviro-Glaze® White. High vandal and ligature resistance. Open shelf design allows easy inspection. 305 [W] x 460 [H] x 76mm [D]



Bestcare® Ligature Resistant Shower Caddy

RBA8121-201

1.6mm Type #304 stainless steel, Enviro-Glaze® White. High vandal and ligature resistance. Raised dimples for air circulation. 203 [W] x 476 [H] x 76mm [D]



Ligature Resistant Grab Rails

RBA4000-Lig-Resist-series

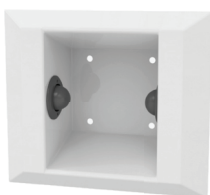
Type #304 stainless steel, satin finish. Infilled design for maximum ligature resistant. Made to order and manufactured to your dimensions.



Recessed Ligature Resistant Toilet Roll Holder

RBA8140-500

White Corterra™ Polymer Resin. High vandal and ligature resistance without the institutional look. Radiused corners to eliminate sharp edges. 178 [W] x 292 [H] x 86mm [RD]



Ligature Resistant Toilet Roll Holder

RBA8141-118

1.5mm Type #304 stainless steel, Enviro-Glaze® White. High vandal and ligature resistance. Spring loaded spindle buttons hold roll in place. 193 [H] x 224 [W] x 73mm [D]



Polycarbonate Mirror

RBA8117-101

Single sheet of 6mm reflective polycarbonate. High vandal and ligature resistance. Radiused corners. Suitable for safety and security applications. Custom sizes available on request. 390 [W] x 990mm [H]

BARIATRIC

Acorn Bariatric Toilet

RBA8851-137-series



1.5-2mm Type #304 stainless steel. 6/3L, 3 Star WELS rating. Larger surface area facilitates easier transfers. Withstands loads of up to 910kg with no measurable deflection. Available with Big John Bariatric Toilet Seat and in Satin or Enviro-Glaze® White. 610 [W] x 425 [H] x 800mm [D]

4.5/3L Bariatric Toilet

RBA5600-001-200-series



1.5-2mm Type #304 stainless steel. 4.5/3L, 4 Star WELS rating. Larger surface area facilitates easier transfers. Maximum load capacity of 540kg. Available with Big John Bariatric Toilet Seat and in Satin or White Powder Coat. 590 [W] x 410 [H] x 800mm [D]

Big John Bariatric Toilet Seat Closed Front

RBA8186-853



White high impact resistant ABS. Extra wide seat for better weight distribution. Maximum load capacity of 540kg. Suitable for toilets with fixings between 130-140mm. 485 [W] x 60 [H] x 485mm [D]

Big John Bariatric Toilet Seat Open Front

RBA8186-855



White high impact resistant ABS. Extra wide seat for better weight distribution. Maximum load capacity of 540kg. Suitable for toilets with fixings between 130-140mm. 488 [W] x 62 [H] x 472mm [D]

Bariatric Drop Down Grab Rail

RBA4007-212 | LH (shown) RBA4007-214 | RH



38mm dia. Type #304 stainless steel, Gloss White. Withstands 500kg downwards and 160kg laterally. Rail locks in upright position when not in use. 250 [W] x 805 [H] x 850mm [D]

Bariatric Drop Down Grab Rail with Toilet Roll Holder

RBA4007-213 | LH (shown) RBA4007-215 | RH



38mm dia. Type #304 stainless steel, Gloss White. Withstands 500kg downwards and 160kg laterally. Rail locks in upright position when not in use. 250 [W] x 805 [H] x 850mm [D]

Bariatric Drop Down Grab Rail with Nurse Call Button

RBA4007-216 | LH (shown) RBA4007-217 | RH



38mm dia. Type #304 stainless steel, Gloss White. Withstands 500kg downwards and 160kg laterally. Rail locks in upright position when not in use. Nurse call hardware by others. 250 [W] x 805 [H] x 850mm [D]

Bobrick Bariatric Folding Shower Seat

B918116L | LH (shown) B918116R | RH



Zinc-plated steel frame with white vinyl antibacterial finish. 8mm thick solid phenolic, cannot delaminate. Self locking mechanism. Supports up to 500kg. 800 [W] x 457 [H] x 572mm [D]

Unisex Bariatric Braille & Tactile Sign Stainless

RBA4330-027



Type #316 marine-grade stainless steel. Vandal and fade resistant. 250 [W] x 200 [H] x 1.6mm



Unisex Bariatric Braille & Tactile Sign | Acrylic

RBA4330-827

Blue acrylic. Luminance contrast. 250 [W] x 200mm [H]

CHANGING PLACES



Koala Kare Adjustable Height Adult Change Table

KB3000-AHL

Stainless steel and durable white UHMW construction. Height-adjustable using single hand with emergency stop. Safely supports up to 225kg. IPX4 rating, capable of withstanding significant exposure to water. 1913 [W] x 1536 [H] x 1023mm [D]



Changing Places Folding Shower Seat

RBA4157-777-005

Self-draining phenolic seat. 1.2mm 304 stainless steel frame, satin finish. Maximum load capacity of 180kg. Support legs fold away when not in use. 960 [W] x 479 [H] x 450mm [D]



Changing Places AutoLock Drop Down Grab Rail

RBA4007-777-008

Type #304 stainless steel, satin finish. AutoLock device retains rail in upright position. Includes toilet roll holder. 75 [W] x 300 [H] x 850mm [D]



5 Star Modular Shower Rail Kit & Mixer

RBA4110-952

Type #304 stainless steel, satin finish 6.0 LPM, 5 Star WELS Handset and Hose [1.5m in length], chrome finish. DZR brass, chrome plated mixer. Modular design allows rail to be positioned as LH, RH or centred. 700 [W] x 1096mm [H]



Bobrick Changing Places Shelf

B296x18

Type #304 stainless steel, satin finish. Hemmed front edge for safe handling. 455 [W] x 75 [H] x 150mm [D]



öken Robe Hook

RBA1631-100

Heavy-duty brass, chrome finish. Dual fixing points for durability. Radiused corners and edges to minimise catching. 22 [W] x 72 [H] x 30mm [D]



Changing Places Braille & Tactile Sign

RBA4330-028

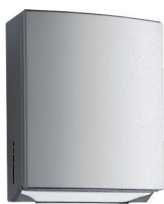
Type #316 marine-grade stainless steel. Vandal and fade resistant. Also available in polycarbonate. 250 [W] x 200 [H] x 1.6mm



Bobrick TrimlineSeries™ Recessed Hand Dryer

B3725 | Satin Finish
RBA7740-777-015 | Matte Black

Type #304 stainless steel. Efficient 1.0kW power usage. Quiet ~70dB(A) operation. 5 year warranty. 300 [H] x 610 [W] x 100mm [RD]



Bobrick Contura™ Paper Towel Dispenser

B4262

Type #304 stainless steel, satin finish. 400 C-fold or 525 multifold paper towels. Radius on doors and corners to match other Contura™ products. Includes TowelMate® to reduce paper waste by up to 20%. 275 [W] x 345 [H] x 125mm [D]



Bobrick Safety Glass Mirror | Budget

B1658 2448

Type #304 stainless steel channel frame, bright polish. One piece frame with 90° mitred corners. Tempered safety glass on shock absorbent padding. 15 year warranty against silver spoilage. 610 [W] x 1220 [H]



