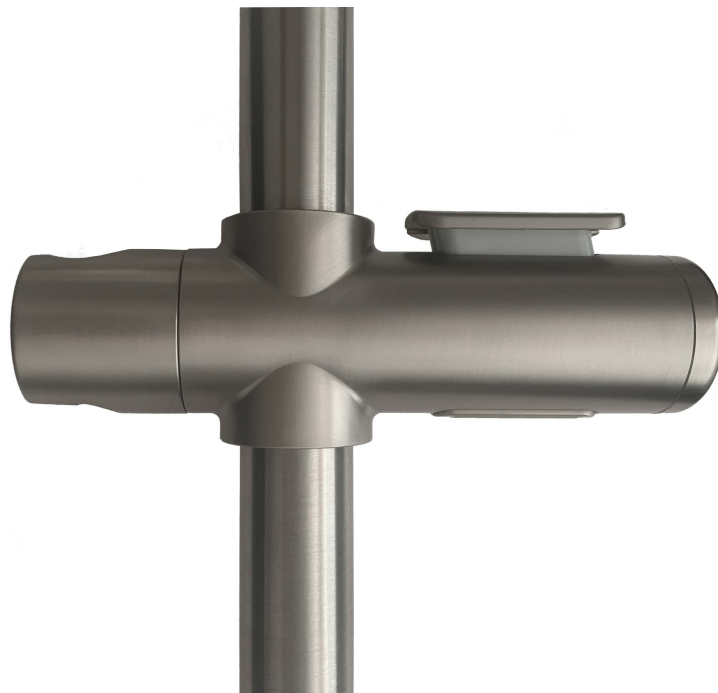


MODELS

RBA4110-999-SERIES

- RBA4110-999-011** ënda Shower Rail Handset Slider | Chrome
- RBA4110-999-013** ënda Shower Rail Handset Slider | Satin
- RBA4110-999-014** ënda Shower Rail Handset Slider | Matte Black, LH
- RBA4110-999-016** ënda Shower Rail Handset Slider | PVD Gunmetal [shown]
- RBA4110-999-023** ënda Shower Rail Handset Slider | PVD Brushed Brass



As improvements in the design and performance of RBA products are continuous, specifications may be subject to change without notice. The illustrations and descriptions herein are applicable to production as of the date of this Installation Instructions Sheet. Revised 07/24 © 2024 by RBA Group II/Model RBA4110-999-series/0724

Installation Instructions



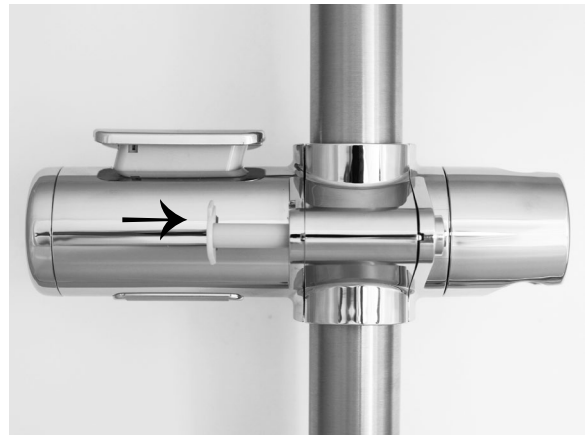
1. Check parts.



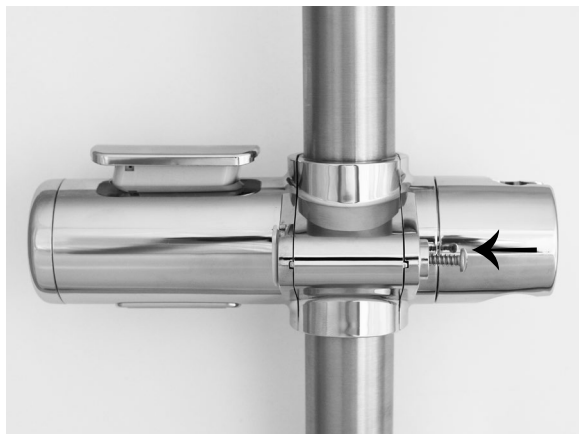
2. Slide sleeve & base onto rail.



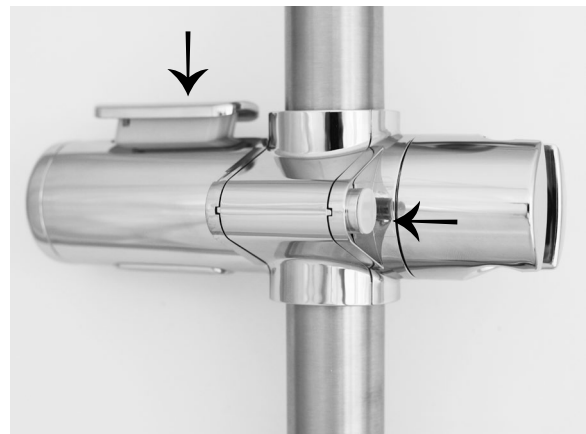
3. Slide clamp into place.



4. Insert pin.



5. Insert screw.



6. Insert cap over screw.

7. Push down on button to move slider.

8. Reverse slider so that clamp side is facing the wall.