

Models RBA4806-731



Materials & Features

Modular PVD-coated shower rail kit complete with slider, handset and 1.5m hose with wall connection [includes backflow prevention]. Grab rail is accessible compliant to AS1428.1 when installed alongside RBA4806-090. PVD coating is a premium coating process in which a solid material is vaporised and slowly layered onto a fixture. This results in a durable, versatile finish that's more environmentally friendly than traditional coating methods. Find out more at rba.com.au/pvd.

Technical Detail

Rail:	900mm, 304 Satin Stainless Steel, 32mm [Dia.]
Hose:	1.5m
Finish:	PVD Gunmetal
Inlet Connection:	DN 15mm [1/2"] BSP Includes backflow prevention
Water Pressure:	150-500 kPa
Water Temperature:	50°C Maximum
Flow Rate:	6.0 LPM
WELS:	5 Star
WELS Reg. Number:	S14913

Available Models

RBA4806-731

Modular Shower Rail Kit | PVD Gunmetal

Related Products

B819687

Bobrick Accessible Compliant Folding Shower Seat

RBA4171-101

Shower Curtain Rail + 2 Curtains & Hooks

RBA4806-721

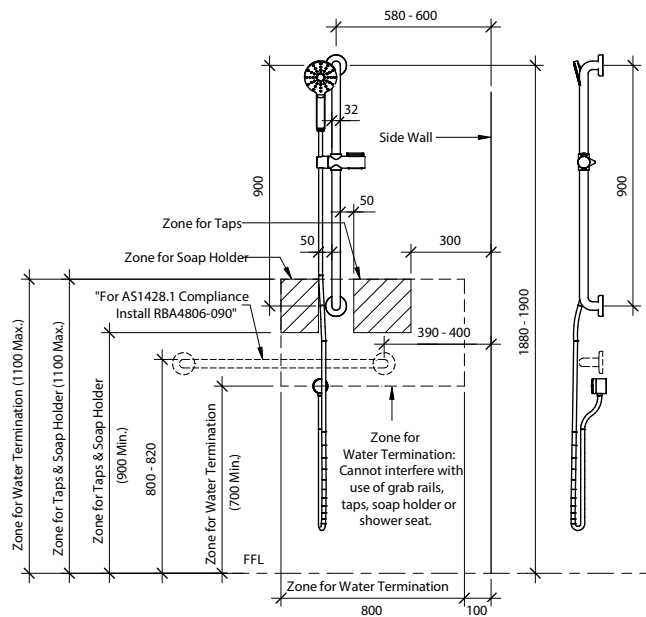
Modular Shower T-Rail Kit | PVD Gunmetal

Installation

Warning: Grab rails are no stronger than the anchors or walls to which they are attached and must be firmly secured in order to support the loads for which they are intended. Refer to local codes and Installation Instructions for location of fixing points, method of attachment, etc.

For best results, unit should be inspected and cleaned regularly as per the instructions in the RBA Product Warranty, Cleaning Care Guide, available on our websites.

Important: Installation instructions and current rough-in details should be furnished with each fixture. Do not rough in without certified dimensions. Dimensions are subject to manufacturer's tolerance of +/-10mm. Due to the semi-reflective nature of PVD, colours may appear differently depending on surface shape and lighting conditions. RBA recommends viewing fixtures under the same lighting conditions where they are to be installed.



As improvements in the design and performance of RBA products are continuous, specifications may be subject to change without notice. The illustrations and descriptions herein are applicable to production as of the date of this Technical Data Sheet. Revised 02/24 © 2024 by RBA Group TD/Model RBA4806-731/0224