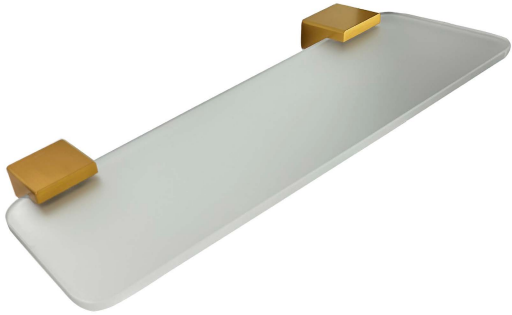


## Model RBA1631-506

### Materials & Features

Manufactured from durable acrylic and heavy duty brass finished in PVD Brushed Brass. enda is a suite of attractive commercial grade accessories with radiused corners and edges to increase comfort and minimise catch. PVD coating is a premium coating process in which a solid material is vaporised and slowly layered onto a fixture. This results in a durable, versatile finish that's more environmentally friendly than traditional coating methods. Find out more at [rba.com.au/pvd](http://rba.com.au/pvd).



### Technical Detail

Brackets:	Heavy Duty Brass, PVD Brushed Brass Finish
Shelf:	Frosted Acrylic
Mounting:	2 x Heavy Duty Brass Lugs
Fixings:	Included

### Available Model

**RBA1631-506** enda Accessible Shelf | PVD Brushed Brass

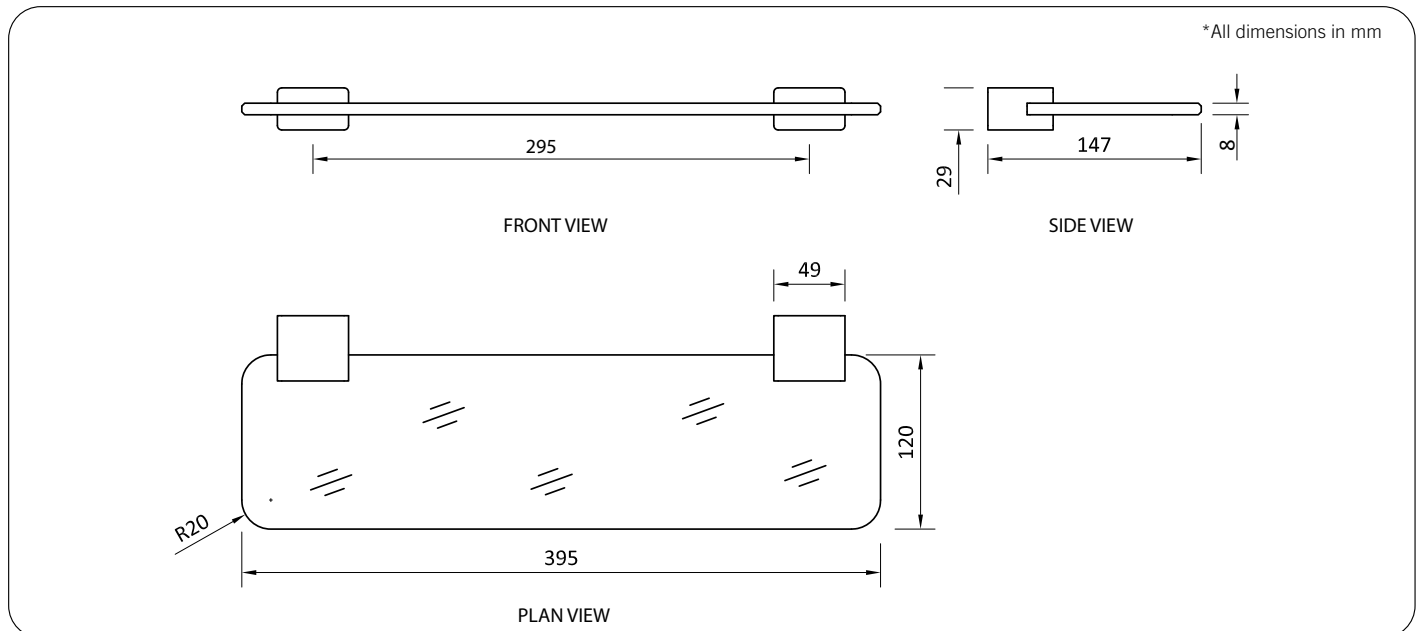
### Related Products

**RBA1631-500** öken Robe Hook | PVD Brushed Brass

**RBA1631-512** öken Single Toilet Roll Holder | PVD Brushed Brass

**RBA1631-522** öken Double Toilet Roll Holder | PVD Brushed Brass

**Important:** Installation instructions and current rough-in details should be furnished with each fixture. Do not rough in without certified dimensions. Dimensions are subject to manufacturer's tolerance of +/-10mm. Due to the semi-reflective nature of PVD, colours may appear differently depending on surface shape and lighting conditions. RBA recommends viewing fixtures under the same lighting conditions where they are to be installed.



Global-Mark.com.au®  
Sourced/Supplied under QMS