

MODELS

RBA MODULAR SHOWER RAILS

RBA480X-711

Modular Shower T-Rail

RBA480X-721

Modular Shower T-Rail Kit with Handset, Slider & Hose

RBA480X-722

Modular Shower T-Rail Kit with Handset, Slider, Hose & Mixer



As improvements in the design and performance of RBA products are continuous, specifications may be subject to change without notice. The illustrations and descriptions herein are applicable to production as of the date of this Installation Instructions Sheet. Revised 11/23 © 2023 by RBA Group II/Model RBAModularShowerRails/0224

Attention

You are responsible for the safe operation of this unit. For optimum installation, use at least 4 suitable screws for each wall plate. Screws should be selected to suit the wall type. Grab rails are no stronger than the anchors or walls to which they are attached, and therefore must be firmly secured in order to support the loads for which they are intended.

Exceeding the maximum load values may cause permanent product damage. If this happens, cease use until checked by a specialised maintenance person. Improper use, such as for gymnastic exercises or as a step, may cause accidents with serious consequences. Reliable operation and product safety depend on the way the products are installed and used. Ensure installation is performed by qualified personnel. Incorrect installation can seriously compromise product functionality.

Maintenance and Cleaning Instructions

Do not use detergents containing bleach, acids, alkalis, chlorine or abrasive products. Do not use abrasive objects [e.g. scouring pads]. Do not use chemicals that can damage plastic. Clean the surface with water and a neutral detergent; rinse carefully and dry with a clean cloth. If alternative cleaning methods and/or chemicals are used, warranty may become void.

Tools Required

- Screw Driver
- Extended Driver Bit
- Spirit Level

Components Supplied For RBA Modular Shower Rails

- 1x Handset, Slider & Hose Kit (RBA480X-721 only)
- 1x Handset, Slider, Hose & Mixer Kit (RBA480X-722 only)
- 1x Open-ended straight rail
- 1x Double-ended straight rail
- 1x Rail connector
- 4x Flange cover
- 4x Wall plate
- 4x Bolt
- 12x Screws
- 12x Wall plugs

Part 1 - Install Horizontal Rail

1. Lay rail flat with thread facing up.



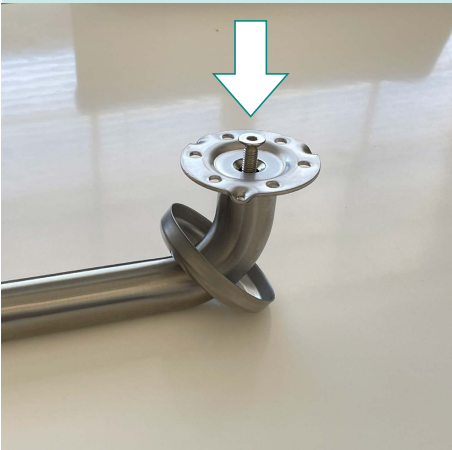
2. Slide flange cover over post.



3. Insert bolt through wall plate.



4. Insert wall plate and bolt assembly.



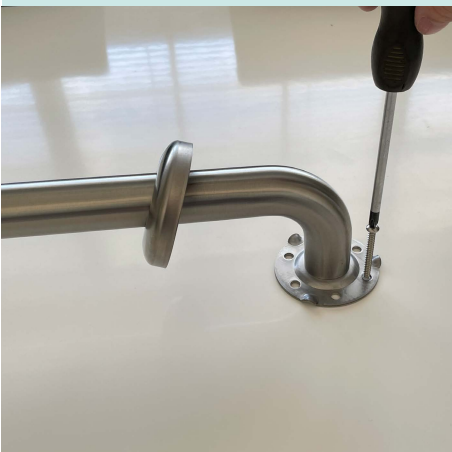
5. Tighten.



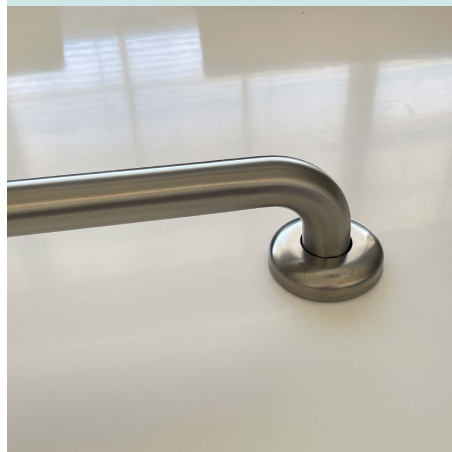
6. Repeat for other fixing points.



7. Ensuring rail is level, slide up flange cover and secure screws. Repeat for all fixing points.

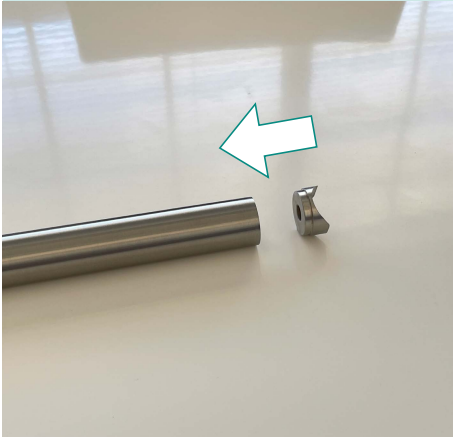


8. Slide flange covers down into place.

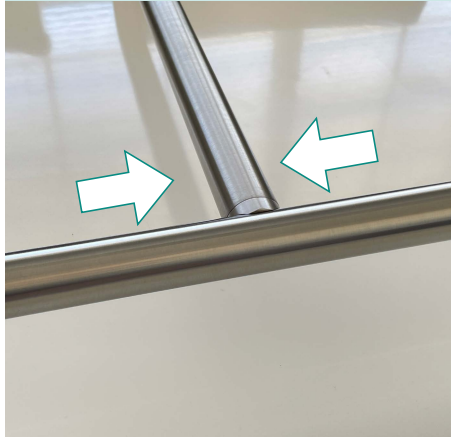


Part 2 - Install Vertical Rail

7. Insert rail connector piece into open-ended rail.



8. Position vertical rail to meet installation requirements. Refer to drawings below for recommended mounting locations to suit AS1428.1.



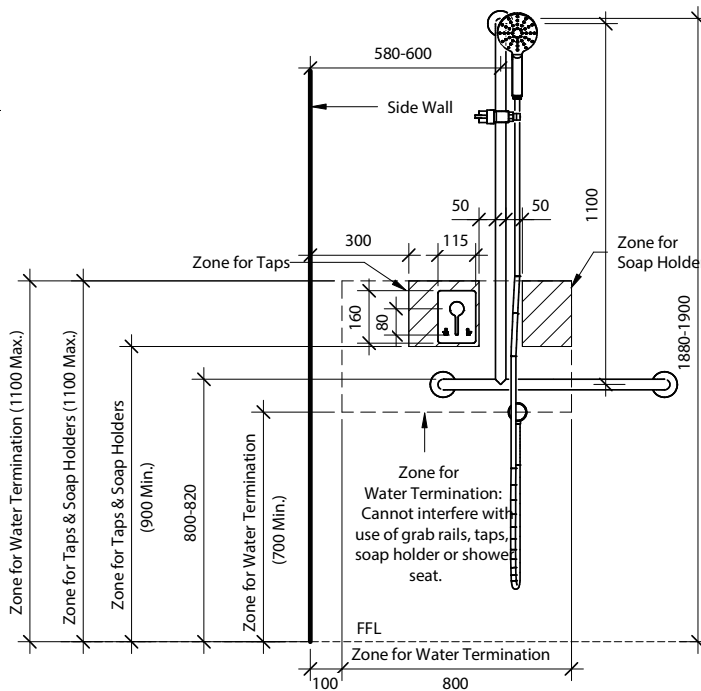
9. Ensuring rail is level, slide up flange cover and secure screws. Once complete, slide flange cover into place.



Dimensions

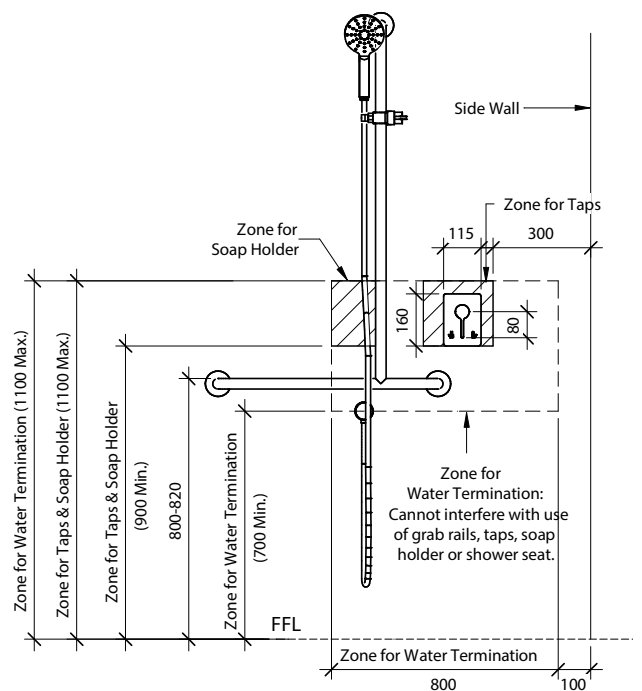
Left Hand

Recommended Installation to suit AS1428.1-2021



Right Hand

Recommended Installation to suit AS1428.1-2021



Note: This product should be installed, by suitably qualified persons, in a fit for purpose application, to suitable materials, using suitable fixings and comply with any relevant codes. It should be inspected periodically for signs of wear and tear that may affect performance or safety.

Dimensions are subject to manufacturer's tolerance of +/-10mm. Rough-in should be completed with each fixture.

Important: Installation Instructions are subject to change without notice. Please visit **our websites** for latest revision.