

Model RBA4801-711



Materials & Features

Modular stainless steel shower T-rail to meet the requirements of AS1428.1 when installed correctly. Snap flange covers conceal fixings after installation. Rails are ambidextrous, allowing the vertical rail to be positioned left, right or centre to suit site requirements.

Technical Detail

Rail: 32mm [Dia], 304 Satin Stainless Steel
Fixings: Supplied

Available Model

RBA4801-711

Modular Shower T-Rail | Modular

Related Products

B819687

Bobrick Accessible Compliant Folding Shower Seat

RBA4171-101

Shower Curtain Rail + 2 Curtains & Hooks

RBA4110-944

5 Star Handset, Hose, Slider & Mixer Kit

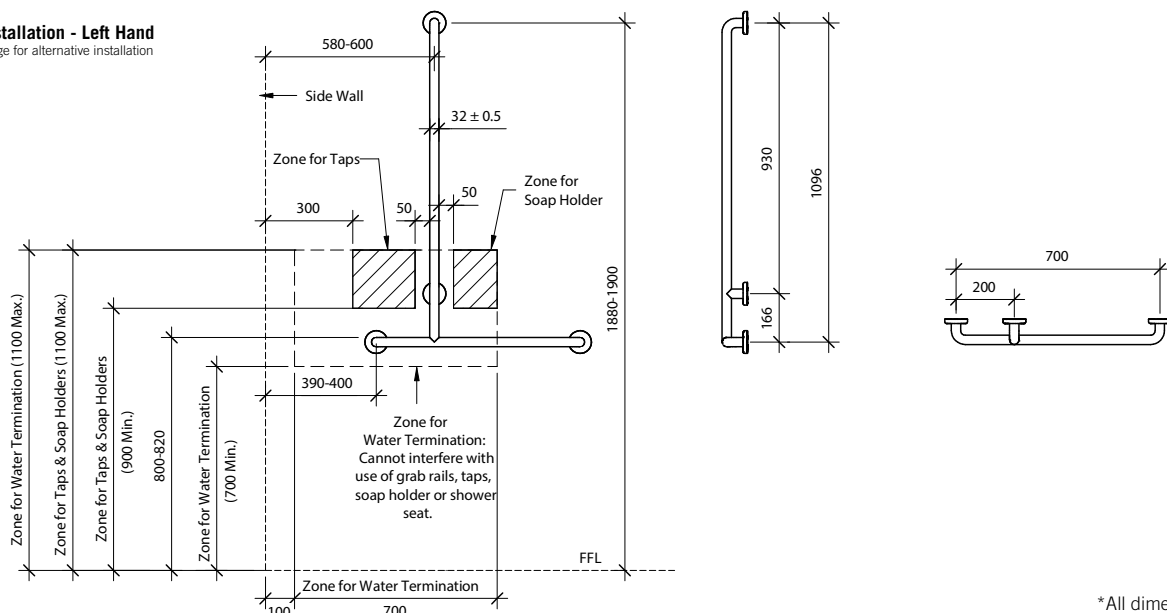
Installation

Warning: Grab rails are no stronger than the anchors or walls to which they are attached and must be firmly secured in order to support the loads for which they are intended. Refer to local codes and Installation Instructions for location of fixing points, method of attachment, etc.

Important: Installation instructions and current rough-in details should be furnished with each fixture. Do not rough in without certified dimensions. Dimensions are subject to manufacturer's tolerance of +/-10mm.

Potential Installation - Left Hand

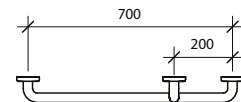
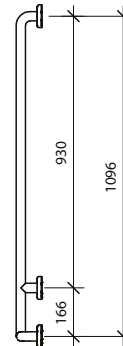
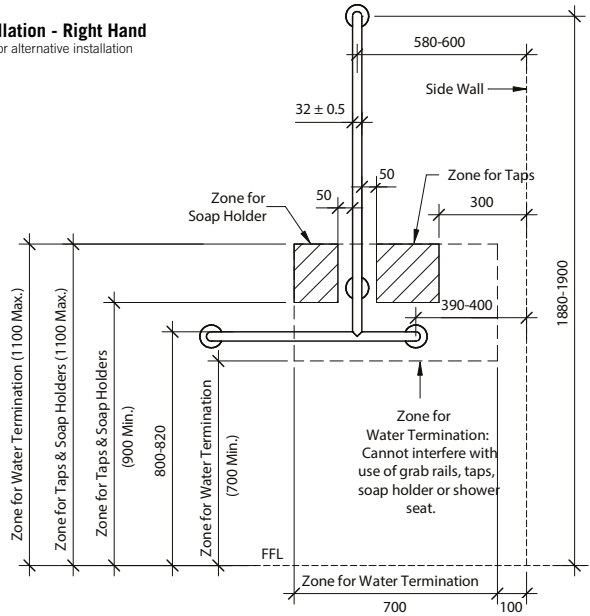
See following page for alternative installation



Model RBA4801-711

Potential Installation - Right Hand

See previous page for alternative installation



*All dimensions in mm