

## Model RBA4801-450



## Materials & Features

Modular stainless steel 90° angled grab rail to meet requirements of the ambulant section of AS1428.1 when installed correctly. Snap flange covers conceal fixings after installation. Unit is ambidextrous, allowing installation on left or right hand side.

## Technical Detail

Rail:	32mm [Dia], 304 Satin Stainless Steel
Fixings:	Supplied

### Available Models

RBA4801-450

Modular Ambulant Grab Rail 90° 450 x 450mm

## Related Products

RBA4090-999-001

RBA4330-022

RBA4330-023

### Single Dress Plate For Panel Mounting

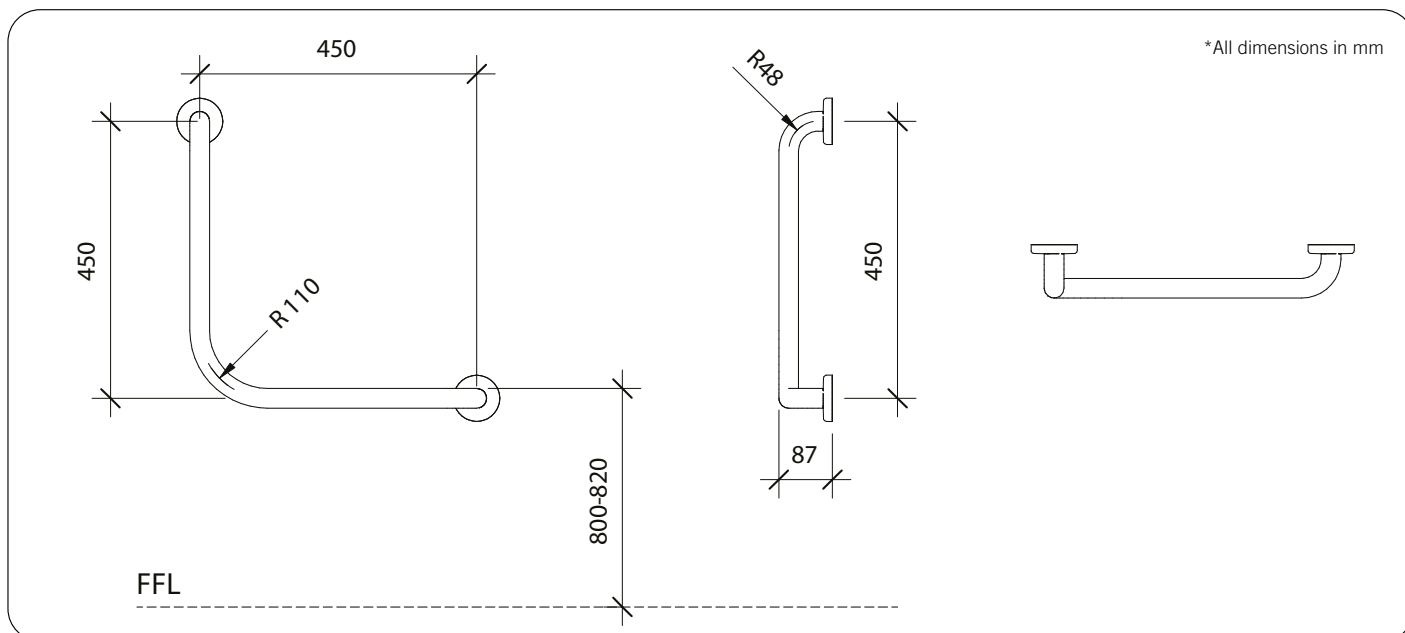
Tactile Sign, Male Ambulant, 316 Stainless Steel

Tactile Sign, Female Ambulant, 316 Stainless Steel

## Installation

Warning: Grab Rails are no stronger than the anchors or walls to which they are attached and, therefore, must be firmly secured in order to support the loads for which they are intended. Refer to local codes and Installation Instructions for location of fixing points, method of attachment, etc.

**Important:** Installation instructions and current rough-in details should be furnished with each fixture. Do not rough in without certified dimensions. Dimensions are subject to manufacturer's tolerance of +/-10mm.



The illustrations and descriptions herein are applicable to production as of the date of this Technical Data Sheet. Revised 03/23 © 2023 by RBA Group TD/Model RBA4801-450/0323