

MODELS

2-WALL GRAB RAIL & BACKREST

RBA4150-229

90° Rail, Polyurethane Backrest, Stainless Steel Grab Rail | RH

RBA4150-230

90° Rail, Polyurethane Backrest, Stainless Steel Grab Rail | LH

RBA4150-239

40° Rail, Polyurethane Backrest, Stainless Steel Grab Rail | RH

RBA4150-240

40° Rail, Polyurethane Backrest, Stainless Steel Grab Rail | LH



*RBA4150-229 Shown



Installation Instructions

1. Mount Backrest concealed wall fixing plate in a location as per Fig. A
2. Assemble Polyurethane Backrest to rail with hardware provided.
3. Based on location of toilet seat hinge point, determine desired length of the Backrest to achieve 95°-100° angle on seat when raised as shown in Fig B.
4. Cut stainless steel bar of Backrest to suit the required angle of the toilet seat when open.
5. Loosely fit mounting brackets for adjoining rails over the ends of the Backrest rail. The FxF connector [Fig. C] should be on the rail near the side wall and the MxF connector [Fig. D] on the opposite side.
6. Slide Backrest mounting brackets with dress rings onto the stainless steel bar of the Backrest. Tighten the mounting bracket cover with the tension bolts to a torque of 80Nm.
7. Set the bracket cover over concealed mounting bracket and secure with locking bolts on the bottom of the mounting bracket cover.
8. Set toilet seat upright to confirm correct position.
9. Slide the side wall rail into the bracket located on the Grab Rail.
10. Locate the side wall rail in the correct location in accordance with the drawing & AS1428.1
11. Remove cover flange and mount unit to wall. Fixings by others.
12. Tighten allen head grub screws on FxF connector.
13. Slide the rear wall rail into the MxF connector.
14. Remove cover flange and mount unit to wall. Fixings by others.
15. Tighten allen head grub screws on the MxF connector.
16. Replace covers over the rail mounting flanges ensure raised edges of the flange are lined up with the dimples of the bracket cover and press into place.

Notes

1. Measure site to find correct location for Grab Rail & Backrest ensuring it is installed to meet AS1428.1 and local building codes.
2. Ensure wall construction is able to support the unit and loads it is subject to. Grab Rails & Backrests are no stronger than the anchors & walls to which they are attached.
3. Wall anchors to be supplied by others.
4. Rough-in should be done with each unit. Construction is subject to manufacturers tolerances of 10mm.

Model RBA4150-229

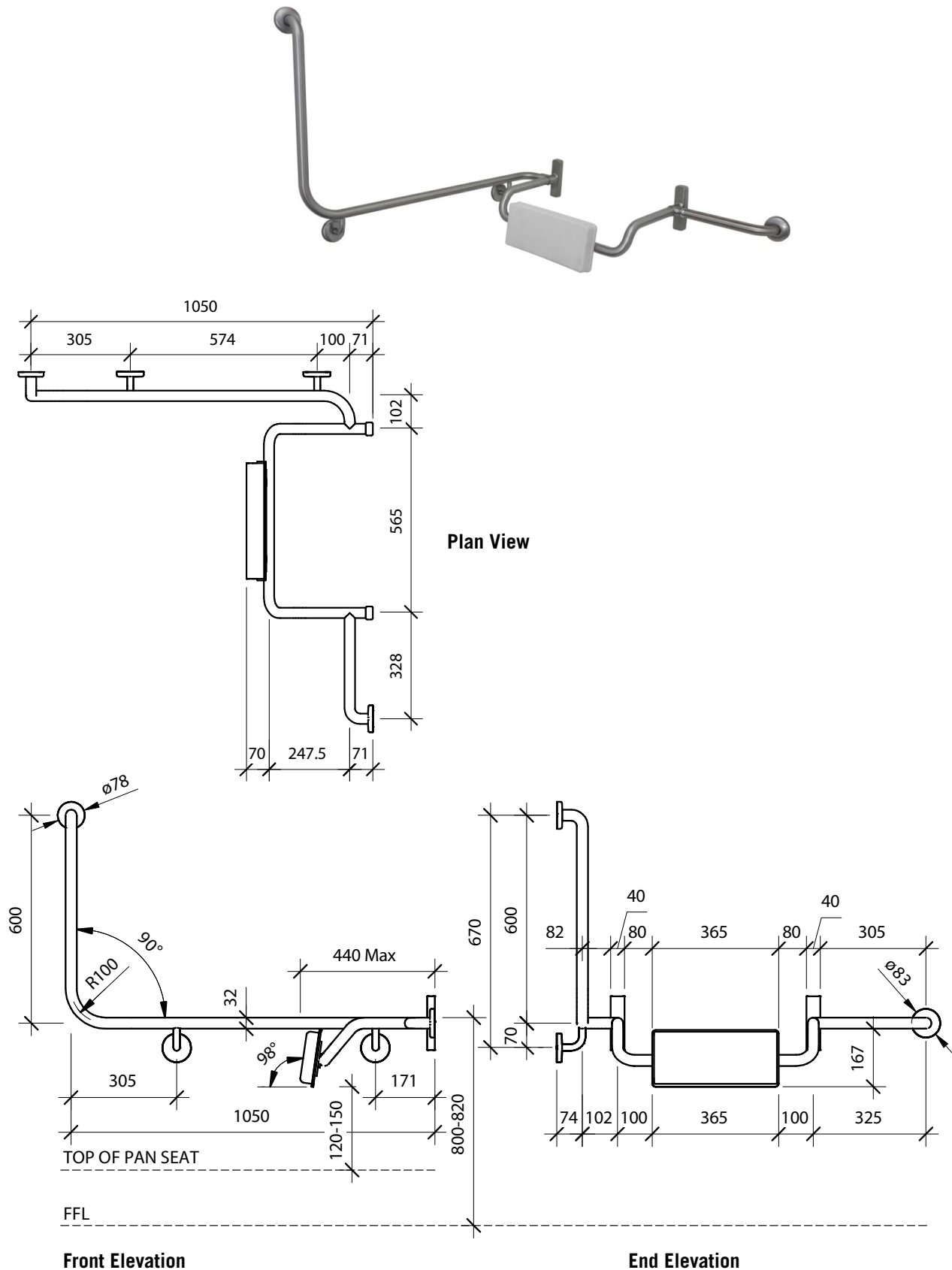


Fig. E: RBA4150-229 90° Right Hand 2 Wall grab Rail With Backrest

Model RBA4150-230

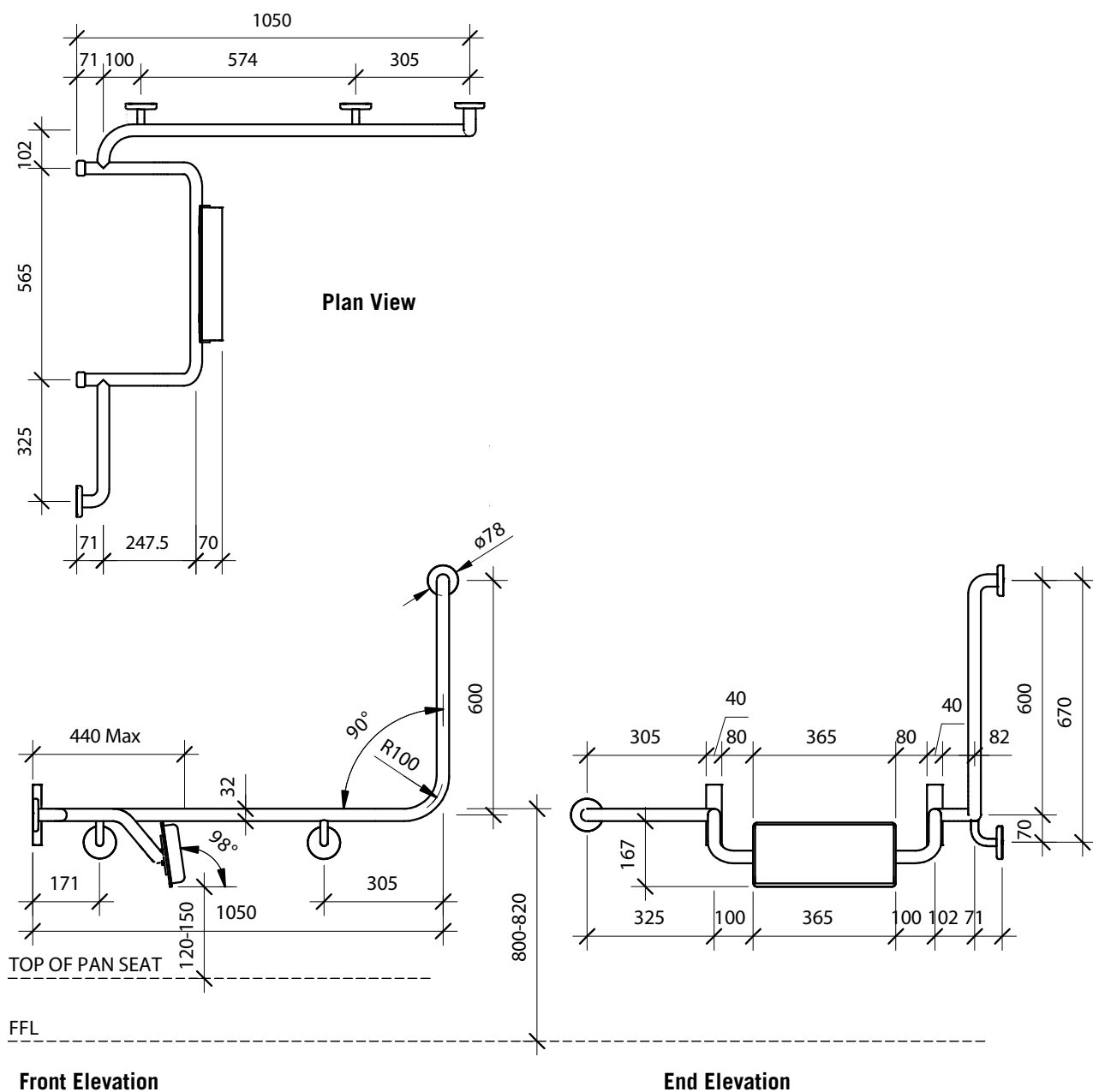
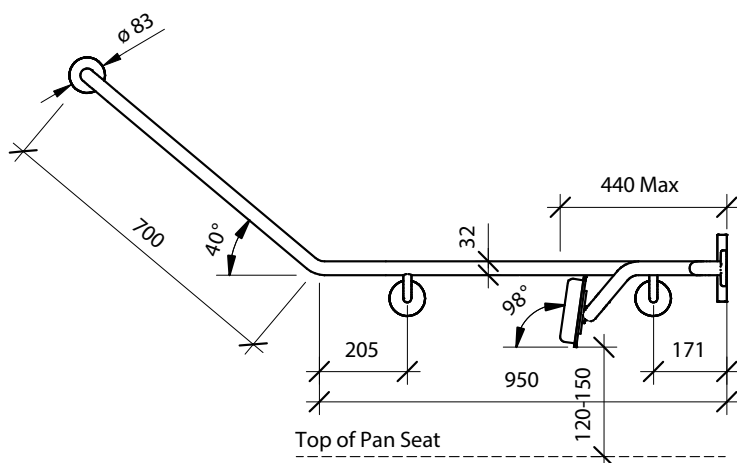
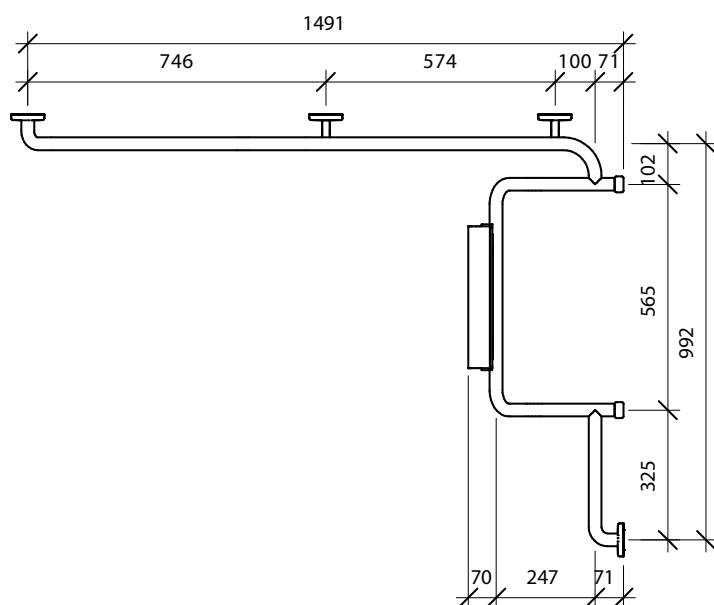
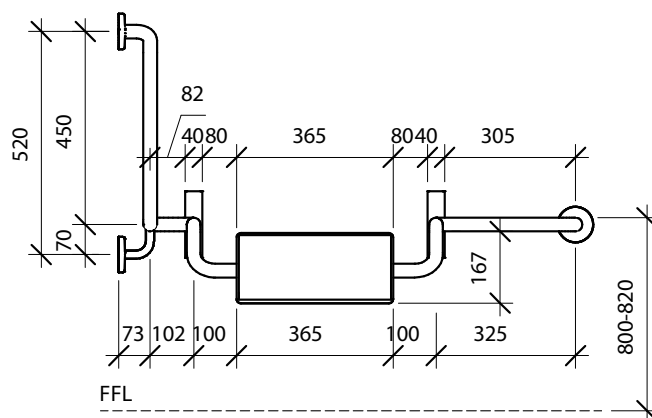


Fig. F RBA4150-230 90° Left Hand 2 Wall grab Rail With Backrest

Model RBA4150-239



Front Elevation



End Elevation

Fig. G RBA4150-239 40° Right Hand 2 Wall grab Rail With Backrest

Model RBA4150-240

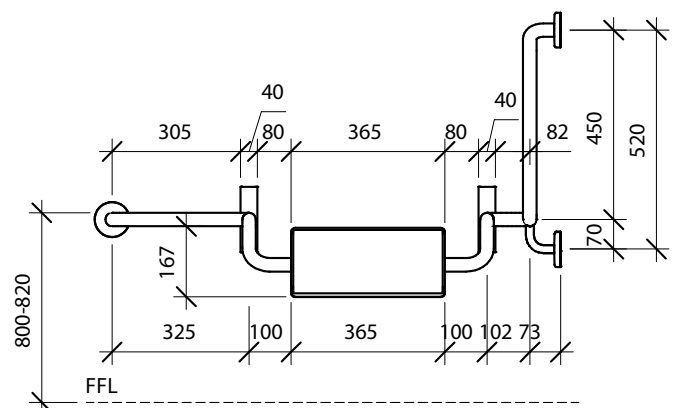
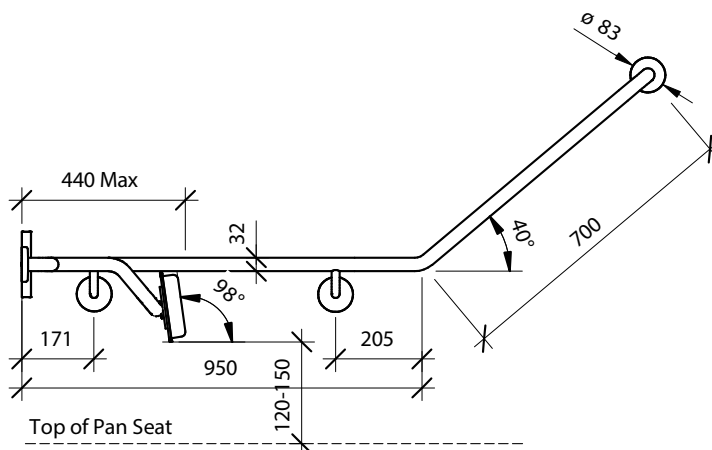
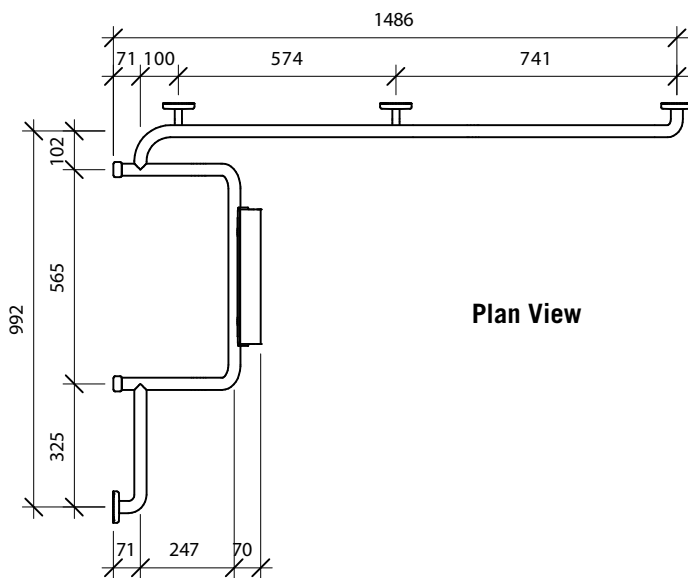


Fig. H RBA4150-240 40° LeftHand 2 Wall Grab Rail with Backrest

Note: This product should be installed, by suitably qualified persons, in a fit for purpose application, to suitable materials, using suitable fixings and comply with any relevant codes. It should be inspected periodically for signs of wear and tear that may affect performance or safety.

Dimensions are subject to manufacturer's tolerance of +/-10mm. Rough-in should be completed with each fixture.

Important: Installation Instructions are subject to change without notice. Please visit **our websites** for latest revision.

