

NOTES



For further information,
contact the nearest RBA Group office:
SYDNEY • MELBOURNE • BRISBANE • PERTH
Phone: 1300 788 778 • Fax: 1300 788 878
info@rba.com.au • www.rba.com.au



INSTALLATION INSTRUCTIONS

MODEL RBA8302-340 SERIES ALL STAINLESS STEEL COMBINATION STATIONS



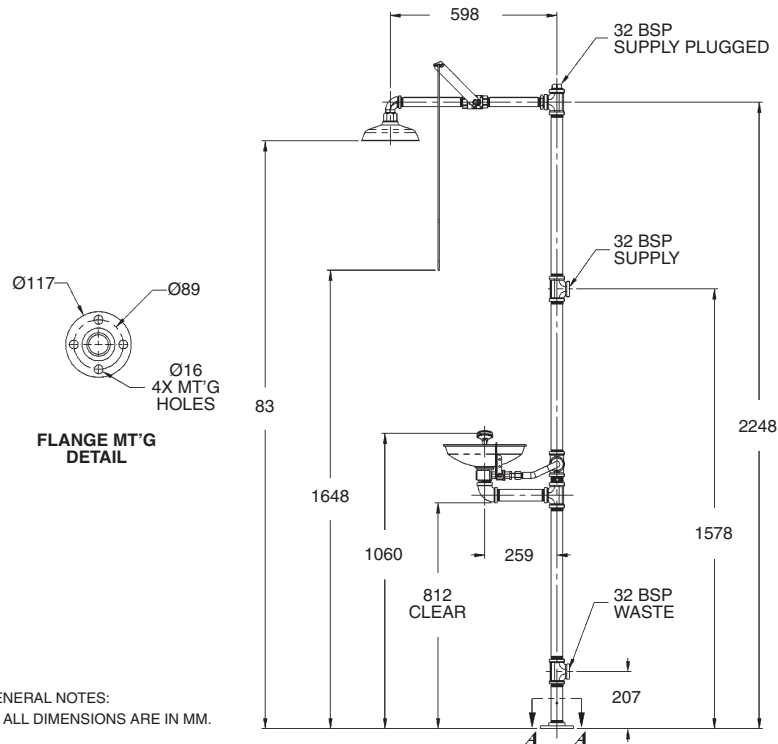
NOTES TO INSTALLER:

- 1) Please leave this documentation with the owner of the fixture when finished
- 2) Please read this entire booklet before beginning the installation
- 3) Check your installation for compliance with plumbing, electrical, AS 4775, and other applicable codes.

INSTALLATION – PRELIMINARY STEPS

- 1) Read the installation instructions prior to beginning the installation
- 2) Separate parts from packaging and verify all necessary parts are accounted for and undamaged. Obtain missing or damaged parts from Acorn Safety prior to beginning installation.
- 3) Flush water supply lines prior to installation. This will remove unwanted debris from the lines and prevent unwanted blockages in the safety equipment.
- 4) In order to comply with AS 4775, the safety equipment must be inspected periodically. An inspection tag has been provided for documentation purposes.
- 5) All employees at risk of contamination should be informed and trained in the use of this and any other safety equipment. The signage provided should be posted appropriately in close proximity to this equipment.

ROUGH-IN



INSTALLATION

SUPPLIES REQUIRED: (not provided by RBA)

- 1) Wall fasteners for signage mounting.
- 2) Pipe sealant or Teflon tape for sealing water connections.

IMPORTANT: flush water supply lines prior to connection to safety equipment.

Notes:

- Top of spray nozzles must be between 838 - 1143mm from finished floor in order to meet AS 4775.
- Bottom of shower head must be between 2083 - 2438mm from finished floor in order to meet AS 4775.
- Use hand tools and wrenches in a manner which will prevent marring finished surfaces. Strap wrenches or tools with plastic jaw linings are highly recommended.
- Refer to Rough-in for location of supply and drain lines.
- Fragments of Teflon tape or pipe sealant residue can interfere with the proper operation of this unit. Ensure pipe sealant methods do not cause contamination in the system.
- Prior to beginning assembly, TURN OFF water supply to 32mm potable water supply line.

Step One: PEDESTAL

- 1) Locate and assemble components "A, B, & C" to create freestanding pedestal base using proper plumbing techniques to seal all made up threads.
- 2) Position center of pedestal assembly a minimum of 0 - 228mm from left and rear wall. Position from center of assembly a minimum of 0 - 280mm from right side wall.
- 3) While holding the assembly in position, mark floor flange mounting hole positions.
- 4) Remove assembly and install appropriate floor anchors to receive mounting bolts (supplied by others).
- 5) Re-position assembly and install mounting bolts and washers.

Step Two: UPPER SHOWER ASSEMBLY

- 1) Assemble components "D, E, F, G, & H" to pedestal subassy in sequential order using proper plumbing techniques to seal all made up threads.
- 2) Ensure that fittings are aligned and perpendicular as shown to allow for later stages of assembly
- 3) Assemble components "N, I & J" in a similar manner.
- 4) Assemble component "K" to valve with clips provided.

INSTALLATION

Step Three: SUPPLY AND SANITARY DRAIN CONNECTION

Note: Refer to Rough-In for supply and drain line locations.

- 1) Install necessary pipe fittings (supplied by others) to make connection to 32mm BSP waste tee with sanitary drain line.
- 2) Install necessary pipe fittings (supplied by others) to make connection to 32mm BSP supply tee w/ potable water supply line.

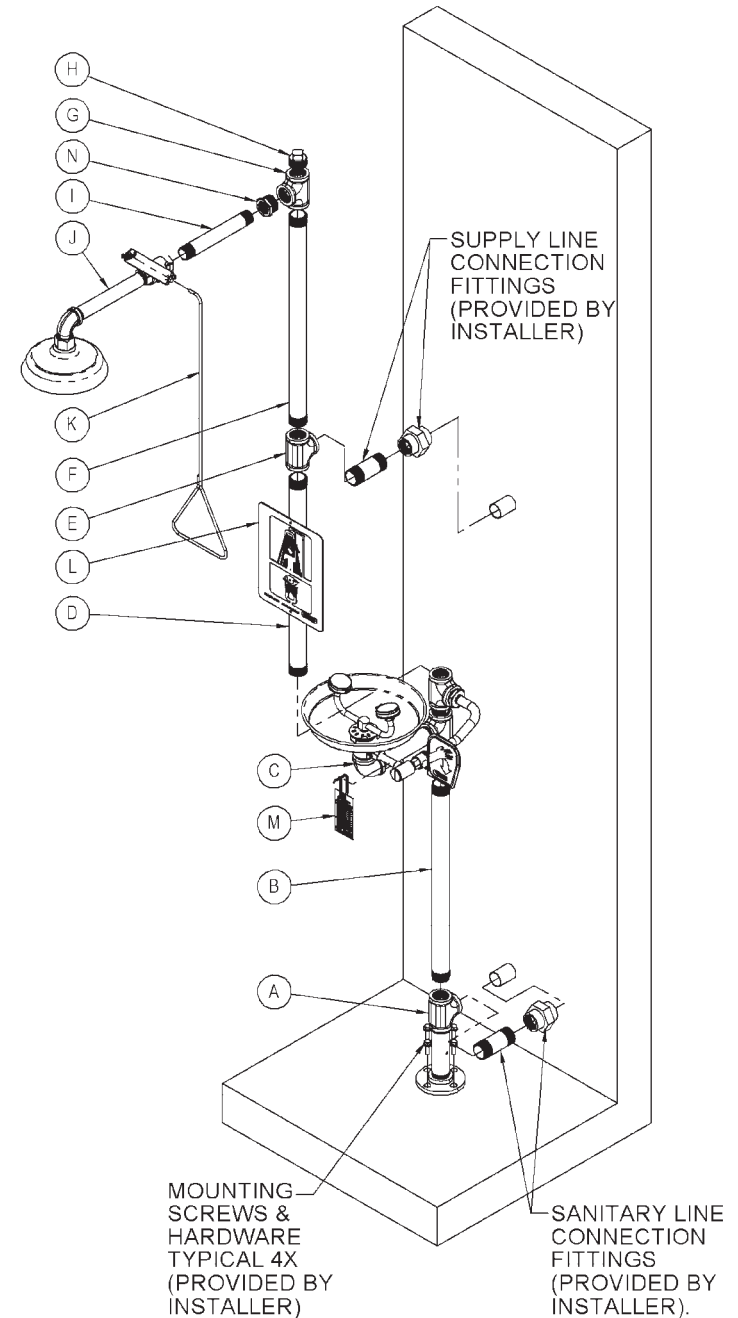
Step Four: TEST

- 1) Verify 12mm supply valve for eye/face wash and 24mm supply valve for shower are turned OFF.
- 2) Turn on water supply to 32mm potable water supply.
- 3) Inspect system for leaks.
- 4) Verify shower and eye/ face wash flow properly.

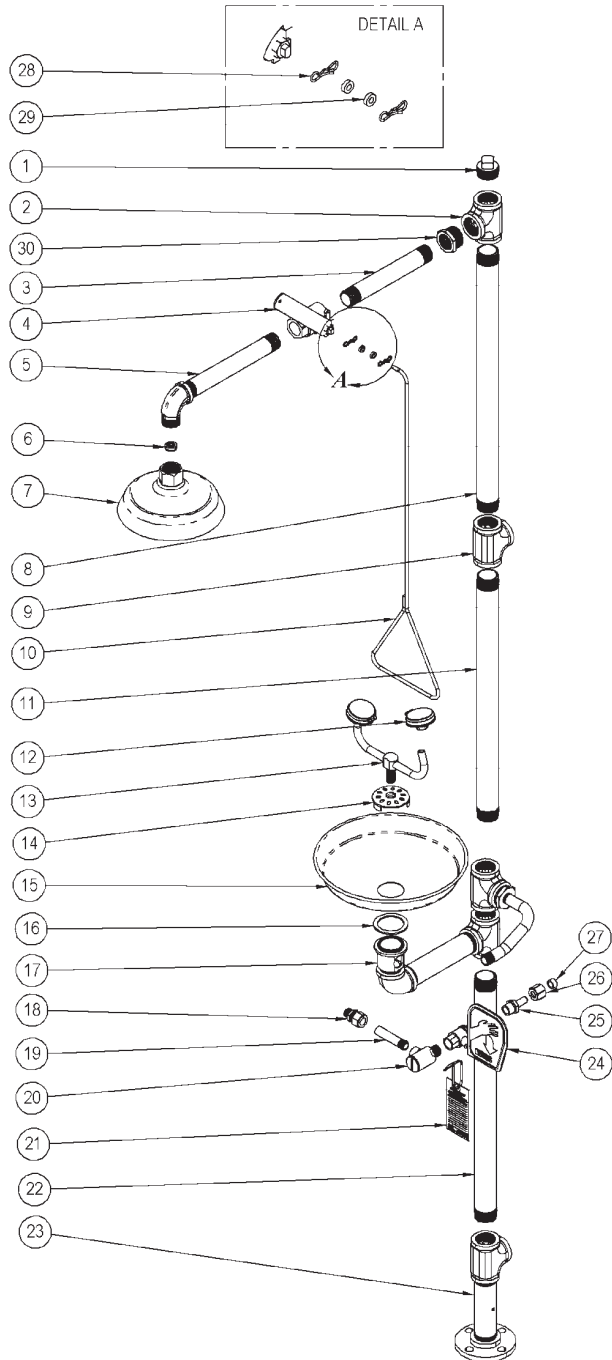
Step Five: SIGNAGE AND INSPECTION

- 1) Install sign "L" with clear visibility as shown, with appropriate hardware (supplied by others).
- 2) Attach inspection tag "M" supplied, with plastic zip tie to 12mm supply line as shown.

INSTALLATION



PARTS LIST



PARTS LIST

ITEM #	PART NUMBER	DESCRIPTION
1	7100-129-000	1 1/4" NPT S/S PLUG
2	7100-131-000	1 1/4 x 11 1/4" NPT S/S TEE
3	2015-012-000	1" NPT x 8.75 LG S/S PIPE
4	7102-414-002	1" BALL VALVE ASSY-S/S
5	7102-414-001	S/S - PIPE ASSY, HORIZ. SHOWER
7	102-631-001	S/S - PIPE ASSY, HORIZ. SHOWER (BF)
6	7102-351-000	SHOWER FLOW REGULATOR-ONLY
7	7102-305-001	S/S SHOWER HEAD ASSY
8	7100-205-000	1 1/4 x 24.00 "L S/S NPT PIPE
9	7100-131-000	1 1/4 x 11 1/4" NPT S/S TEE
10	7102-350-000	PULL HANDLE, DRENCH SHOWER, 29"
	7102-347-000	PULL HANDLE, DRENCH SHOWER, 48" (BF)
11	7100-206-000	1 1/4 x 22.50" L S/S NPT PIPE
	7100-209-000	1 1/4 x 27.50" L S/S NPT PIPE (BF)
12	7101-104-001	FACEWASH NOZZLE
	7101-100-001	EYEWASH NOZZLE
13	7101-404-001	YOKE STEM ASSEMBLY - S/S
14	7100-108-000	BOWL STRAINER
15	7100-008-000	S/S BOWL
16	7101-046-000	S/S BOWL GASKET
17	7101-073-001	BASIN DRAIN, S/S
18	7101-079-000	5/8 x 3/8 NPTM ADAPTOR-S/S
19	7101-405-199	3/8 NPT x 3" LG. 304 S/S PIPE
20	7101-075-001	WATER SUPPLY STRAINER - S/S
21	7100-401-000	INSPECTION TAG
22	7100-206-000	1 1/4 x 22.50" L S/S NPT PIPE
	7100-208-000	1 1/4 x 17.50" L S/S NPT PIPE (BF)
23	7101-406-001	BASE FLANGE ASSY - S/S
24	7101-210-001	S/S BALL VALVE PADDLE-ASSY
25	7102-031-199	1/2NPT x 1/2OD MALE FITTING-S/S
26	7102-029-199	1/2NPS COMP NUT CUSTOM-S/S
27	7102-032-000	1/2"OD TUBE BUNA-N SLEEVE
28	7100-211-000	BOW TIE COTTER PIN
29	7100-219-000	NYLON WASHER
30	7100-215-000	HEX BUSHING, 1 1/4" x 1" NPT - S/S