

Note: This product should be installed, by suitably qualified persons, in a fit for purpose application, to suitable materials, using suitable fixings and comply with any relevant codes. It should be inspected periodically for signs of wear and tear that may affect performance or safety.

Dimensions are subject to manufacturer's tolerance of +/-10mm. Rough-in should be completed with each fixture.

Important: Installation Instructions are subject to change without notice. Please visit www.rba.com.au for latest revision.



- RBA7730-003** Wall Mounted Gel Sanitiser & Soap Dispenser
- RBA7730-004** Wall Mounted Gel Sanitiser & Soap Dispenser with Drip Tray
- RBA7730-005** Gel Sanitiser & Soap Dispenser with Drip Tray & Stand
- RBA7730-013** Wall Mounted Spray Sanitiser & Soap Dispenser
- RBA7730-014** Wall Mounted Spray Sanitiser & Soap Dispenser with Drip Tray
- RBA7730-015** Spray Sanitiser & Soap Dispenser with Drip Tray & Stand

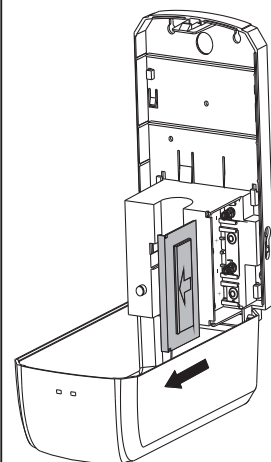
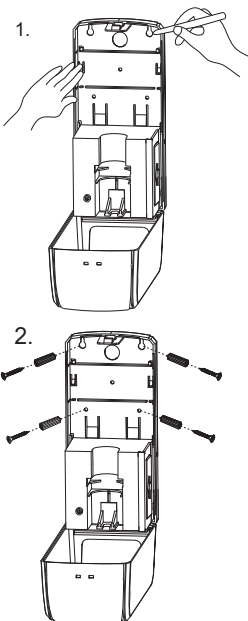
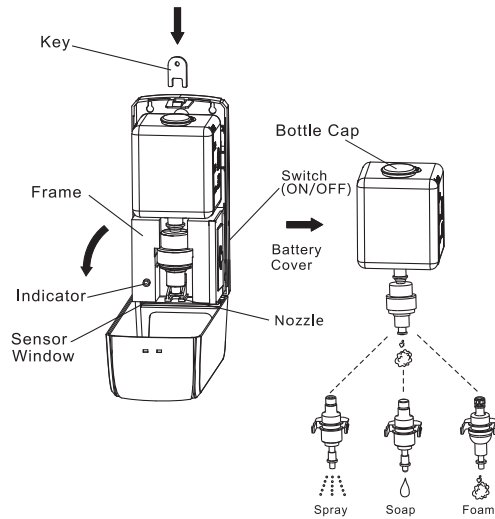
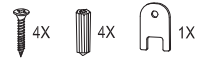
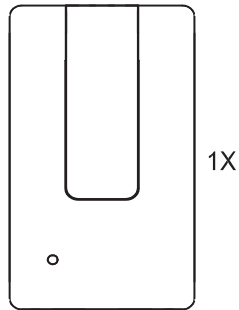


Model	Sanitiser Dispenser
Date	14/08/20

Supersedes all previous

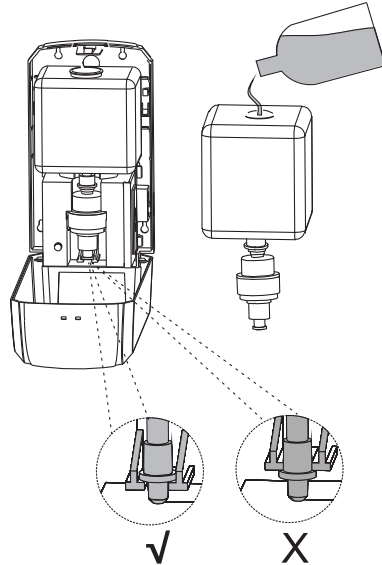
Packing List

4 x C batteries not included



4Pcs Batteries (1.5V*4Pcs, Size C) *

*Remove bottle and pump assembly to refill



*Ensure pump & bottle are properly replaced after refilling

Installation

Use screw fixings provided.
 If electing to use double sided tape [by others] to fix to wall, RBA7730-999-006 Drip Tray cannot be installed as unit will sit too far off the wall.
 If installing to meet AS1428.1-2009 in a bathroom, ensure outlet of dispenser is 900-1100mm off the FFL and compliant with all other aspects of the code.
 Avoid excess humidity, reflective surfaces and direct sunlight when installing.
 Allow 400mm bench clearance under the dispenser
 The installer/owner should assess of the potential risk of sanitiser being ingested by children and locate the dispenser at an appropriate height and/or a supervised location.

Operation

Hold hand under dispenser for sensor operation. Do not remove hand until dispense operation is complete. To refill bottle and/or clean inside unit, turn unit off and remove bottle assembly to avoid spillage Do not use >75% alcohol sanitiser

Maintenance

Turn unit off and wipe with a damp cloth. Soft detergents can be used if necessary. Do not use bleach-based or abrasive cleaning chemical. Periodically clean the dispenser by pumping warm water through the unit

Indicator Light:

- Green 5 Second Flash - Normal Operation
- Red 5 Seconds Flash - Low Battery
- Red 2 Second Flash - Obstructed Sensor

Troubleshooting

Problem	Probable Cause	Solution
Unusual activation	Direct sunlight/ Highly reflective surface	Remove Direct/Bright light
Soap / Sanitiser does not dispense	Batteries are loose or expired	Ensure correct battery installation
	Soap/Sanitiser bottle is empty	Refill
	Sensor is obstructed	Remove obstruction
Blocked/Clogged nozzle	Incorrect Sanitiser being used	Confirm the viscosity of sanitiser suits the type of pump

Spare Parts

- RBA7730-999-006 Drip Tray Kit
- RBA7730-999-007 Stand Kit
- RBA7730-999-008 Replacement Bottle
- RBA7730-999-009 Replacement Pump - Spray
- RBA7730-999-010 Replacement Pump - Foam
- RBA7730-999-011 Replacement Pump - Liquid/Gel

***For Battery recycling options in your area visit <https://recyclingnearyou.com.au/>