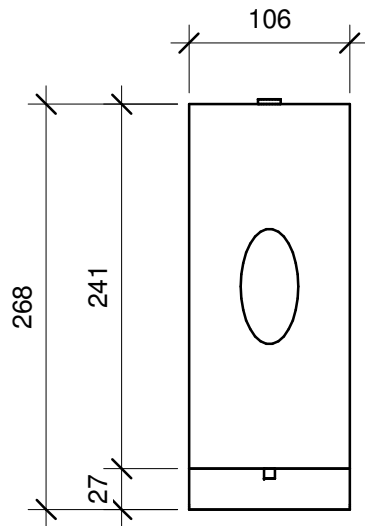
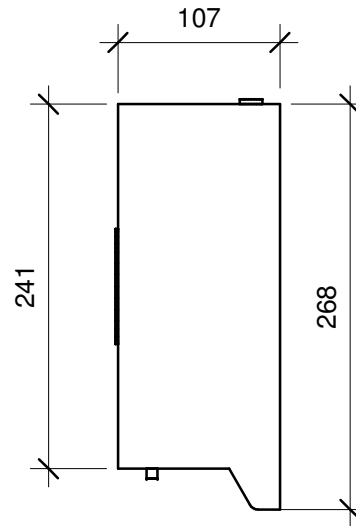


1 PLAN VIEW
1 : 5

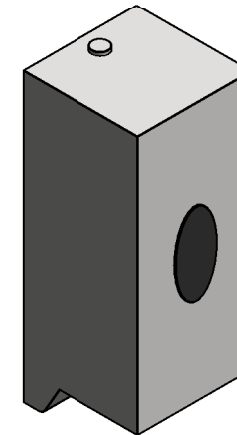
Manufacturer Name: Bobrick Washroom Equipment, Inc.
 Model Number: RBA-B2012
 Modified Issue: 20200323.01
 Description: Automatic Wall Mounted Liquid Soap Dispenser
 URL: <http://www.bobrick.com/Pages/default.aspx>
 Materials and Finishes: Stainless Steel - Satin



2 FRONT ELEVATION
1 : 5



3 SIDE ELEVATION
1 : 5



4 3D VIEW

23/03/2020 2:32:21 PM

ALL DIMENSIONS ARE IN MILLIMETERS

"This drawing & the information contained herein is and shall remain the property of RBA Group. It must not be used or reproduced for any other purpose other than that stated in the document for which it was produced. Unauthorised use in any form whatsoever is strictly prohibited." © RBA Group 2020

NO.	REVISION	BY	DATE

DRAWN: RV	 rba Sydney . Brisbane . Melbourne . Auckland 1300 788 778 www.rba.com.au info@rba.com.au	PROJECT	
DATE: 23.03.2020		TITLE Automatic Wall Mounted Liquid Soap Dispenser	
CHECKED: JL	SCALE: 1 : 5 @ A4	DRAWING No: rba-bim-B2012	SHEET
APPROVED:			REV