

## Model RBA2730-032



### Materials & Features

Basin manufactured from stainless steel with all exposed surfaces in satin finish. Anti-microbial flexible bubbler with self-closing push button and non-squirt features. Stainless steel bubbler options available on request. Valve includes flow adjuster and strainer. Integral perforated drain for hygiene & ease of cleaning. Smooth radiused design eliminates sharp corners. Fully concealed pipework and fixings.

### Technical Detail

Inlet Connection:	G½B
Outlet Connection:	40mm BSP waste
Water Pressure:	200 – 500 kPa
Basin:	1.6mm, type 304 Stainless Steel
Housing:	Granite powder coated on galvanized steel
Force to activate:	≤ 22N
Refrigerant:	R-134a
Power Requirement:	220VAC, 50HZ, single phase
Capacity:	30L/hr drinking water at 10oC (incoming 27oC, ambient 32oC)

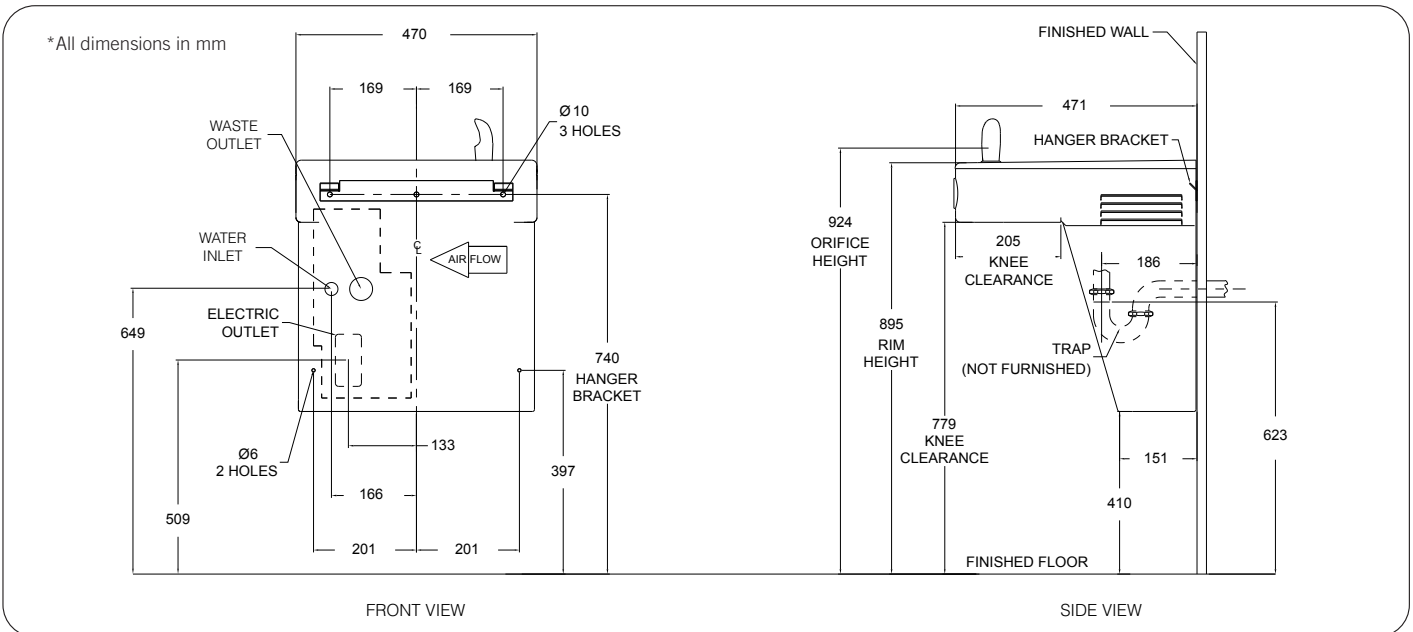
### Available Models

- RBA2730-032** Wall Mounted 'Compact', granite powder coated water cooler, 30L/hr
- RBA2730-132** Wall Mounted 'Compact', granite powder coated water cooler, with glass filler, 30L/hr
- RBA2730-732** Wall Mounted 'Compact', granite powder coated water cooler, with sensor bottle filler, 30L/hr

### Installation

Ensure wall construction is suitable to support the unit and mount to wall with front-fixing frame and S-clip provided. Trap and wall anchors by others. Isolation valve, trap & GPO by others. Allow 100mm minimum clearance either side for ventilation.

**Important:** Installation instructions and current rough-in details should be furnished with each fixture. Do not rough in without certified dimensions. Dimensions are subject to manufacturer's tolerance of +/-10mm.



As improvements in the design and performance of RBA products are continuous, specifications may be subject to change without notice. The illustrations and descriptions herein are applicable to production as of the date of this Technical Data Sheet. Revised 04/21 © 2021 by RBA Group TD/Model RBA2730-032/0421