

MODELS

RBA8902-SERIES

RBA8902-102

Free Standing, Wall Fixed Drinking Fountain

RBA8902-151

Free Standing, Wall Fixed, Junior Height



As improvements in the design and performance of RBA products are continuous, specifications may be subject to change without notice. The illustrations and descriptions herein are applicable to production as of the date of this Installation Instructions Sheet. Revised 07/22 © 2021 by RBA Group II/Model RBA8900-102/0722

Components

- Stainless Steel Drinking Fountain
- Stainless Steel Fixing Bracket
- Security Screws and bit

Components supplied by others

- Floor and wall anchors
- 40mm trap

Hydraulic Requirements

Pressure:	Min: 200kPa Max: 500kPa
Inlet Connection:	G½B inlet connection
Outlet Connection:	40mm BSP Waste connection
Water Temperature:	4 - 30°C

Pre-Installation

Installation should be in accordance with AS/NZS 3500.1 & AS/NZS 3500.2, local authority and statutory requirements, and as per these installation instructions.

1. Water should be terminated with a 15mm mini cock, within the shaded area shown. Towards the top of the area is preferable due to the proximity of the access panel.
2. 40mm waste should be terminated at 830mm [675mm for Junior Height] from finished floor, and centre of the unit. This dimension is arrived at using a Iplex standard 40mm P trap supplied by others.
3. If S trap configuration is required, floor penetration should be within an area not closer than 40mm from the edge of the footprint of the unit.

Installation

1. Remove the mounting frame and access panel from the unit using the security bit provided.
2. Fix the mounting frame and S-clip to the wall in the location shown, using suitable fixings supplied by others. Using a level, ensure that the frame is vertical, and the S-clip is level.
3. Fix the unit to the frame and mark the fixing holes in the base of the unit. Remove the unit, drill the floor, fit floor anchors [by others] and re-fit the unit.
4. Ensure that the unit is securely fitted to the frame and make the necessary water and waste connections.
5. Check for leaks and replace the access panel.

1 Bubbler

2 Stainless Steel Access Panel

3 Vandal Resistant Fasteners

4 Wall & Floor Anchors (By Others)

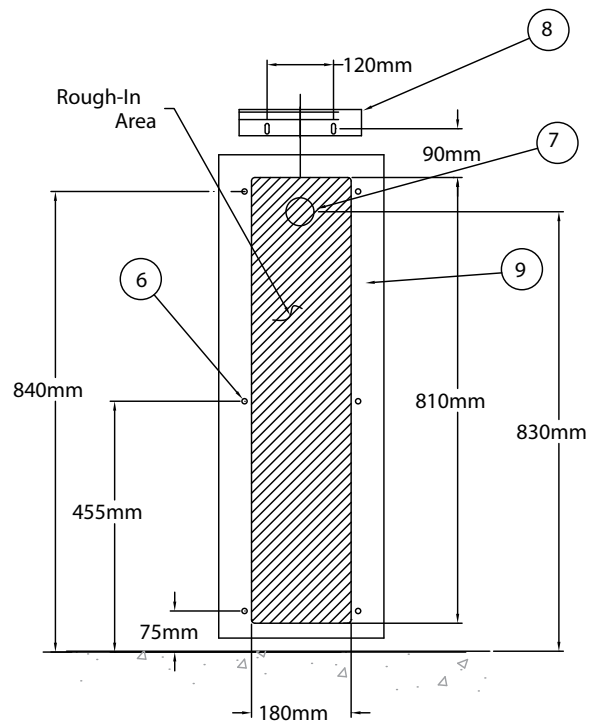
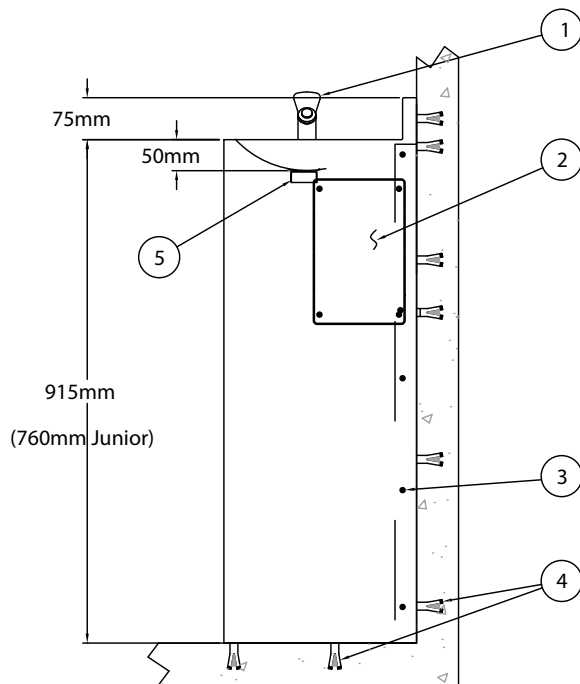
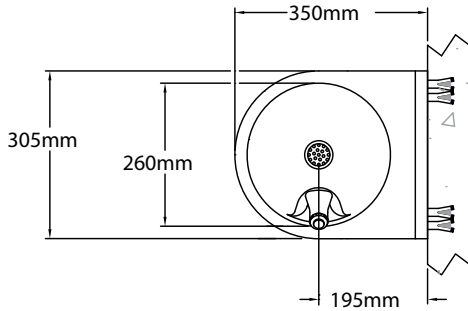
5 40mm BSP Waste Connection

6 9mm DIA. Anchoring Holes

7 Waste outlet for Hardies 40mm "P" trap

8 "S" Clip

9 Mounting Frame



RBA8902-102 Free Standing Drinking Fountain

Unit is a free standing drinking fountain fabricated of 1.6mm thick, type 304 stainless steel with exposed surfaces polished to a satin finish. Smooth radiused design eliminates sharp corners. Supplied with CP self closing, push button bubbler with mouth shield.

Troubleshooting

Problem	Probable Cause	Solution
No flow or low volume	Water turned off. Inlet strainer blocked.	Turn on. Remove and clean.
Water flows continuously	Cartridge blocked with dirt or cartridge damaged	Remove and clean. Replace the cartridge
Leak from body	Loose cap or cartridge damaged	Tighten cartridge cap. Replace the cartridge
Short or long flow stream	Low or high pressure	Rectify supply pressure as per hydraulic requirements.
Short or long flow stream	Cartridge adjustment required	Remove button, adjust white screw in cartridge clockwise to reduce, or counter clockwise to increase.

Spare Parts

RBA Code No.	Description
RBA8900-999-002	Replacement cartridge

Note: This product should be installed, by suitably qualified persons, in a fit for purpose application, to suitable materials, using suitable fixings and comply with any relevant codes. It should be inspected periodically for signs of wear and tear that may affect performance or safety.

Dimensions are subject to manufacturer's tolerance of +/-10mm. Rough-in should be completed with each fixture.

Important: Installation Instructions are subject to change without notice.

Please visit **our websites** for latest revision.