

MODELS

RECESSED SOAP DISH

RBA8132-100

Recessed Soap Dish | Stainless Steel | Satin

RBA8132-101

Recessed Soap Dish | Stainless Steel | Satin | Budget

RBA8132-117

Recessed Soap Dish | Stainless Steel | Enviro-Glaze® White

RBA8132-144

Recessed Soap Dish | Stainless Steel | Satin | Rear Fix [shown]



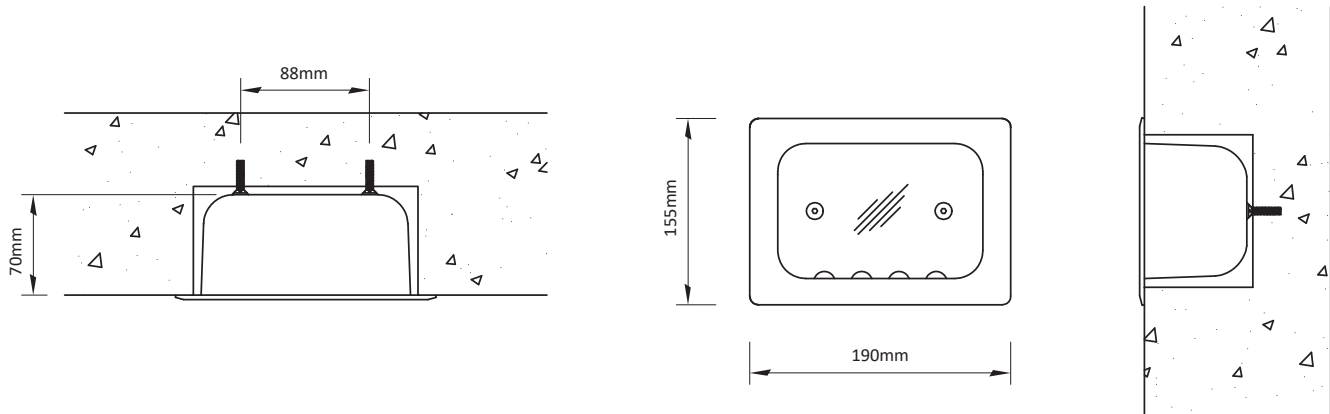
As improvements in the design and performance of RBA products are continuous, specifications may be subject to change without notice. The illustrations and descriptions herein are applicable to production as of the date of this Installation Instructions Sheet. Revised 09/25 © 2025 by RBA Group II/Model RBA8132series/0925

Description

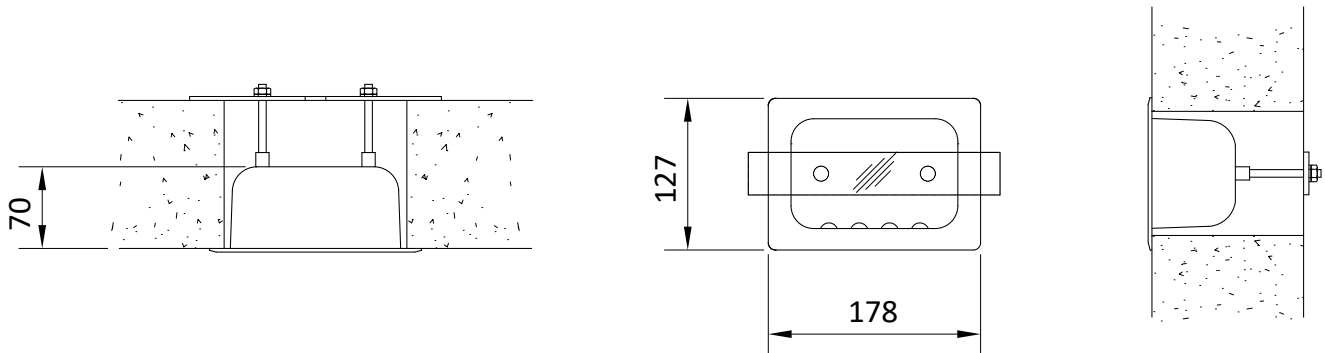
Constructed from heavy-duty stainless steel with all exposed surfaces in satin finish. Features bevelled face plate for ligature and vandal resistance, as well as raised dimples that provides air circulation around soap bar. Both front and rear-fixed options available.

Rough In and Dimensions

RBA8132-100 Series



RBA8132-144

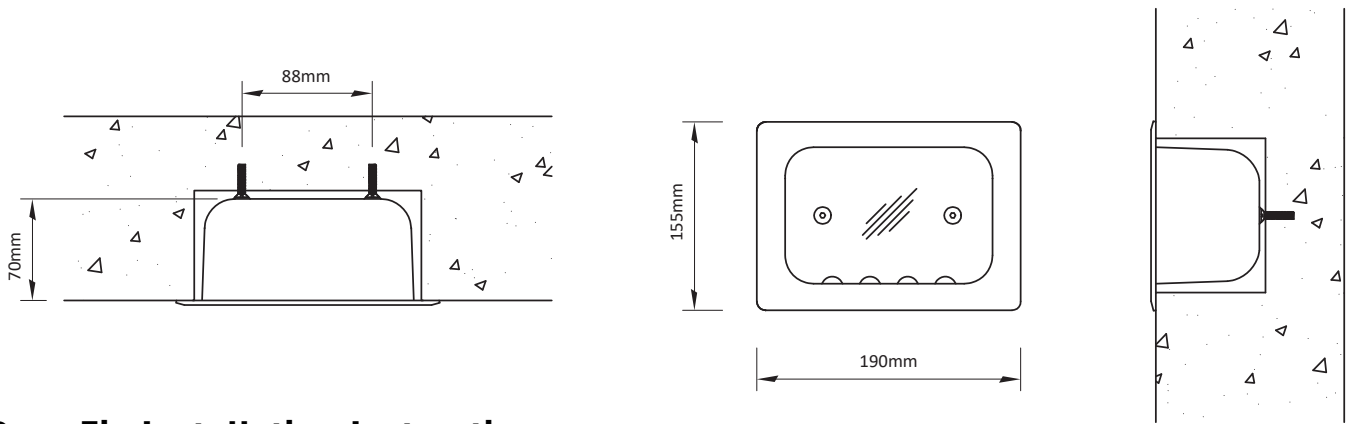


Installation Notes

- Please leave this documentation with the owner of the fixture when finished.
- Please read the entirety of this booklet before commencing installation. Check your installation for compliance with relevant local standards.
- All wall penetrations in wet areas are to be in accordance with NCC Vol.2: Wet Areas.

Front Fix Installation Instructions

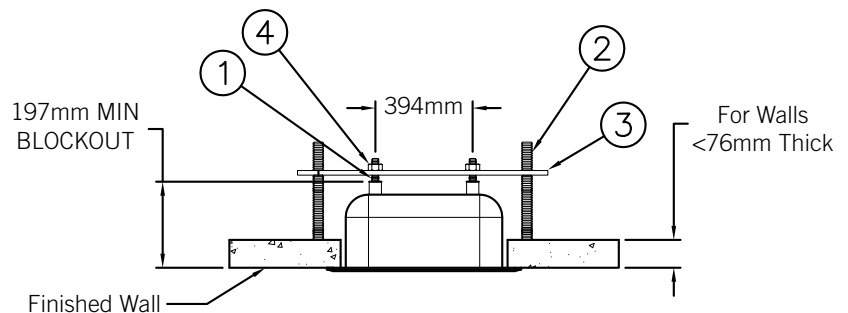
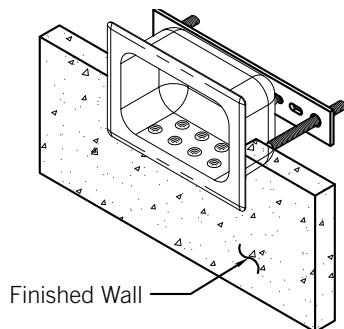
1. Install security fixings [by others] through the pre-drilled fixing holes and into the mounting substrate.
2. If required, seal with anti-pick sealant [by others] to eliminate gaps between wall and fixtures.



Rear-Fix Installation Instructions

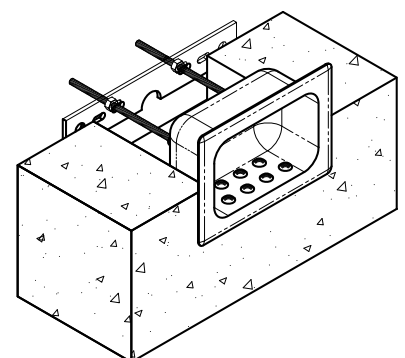
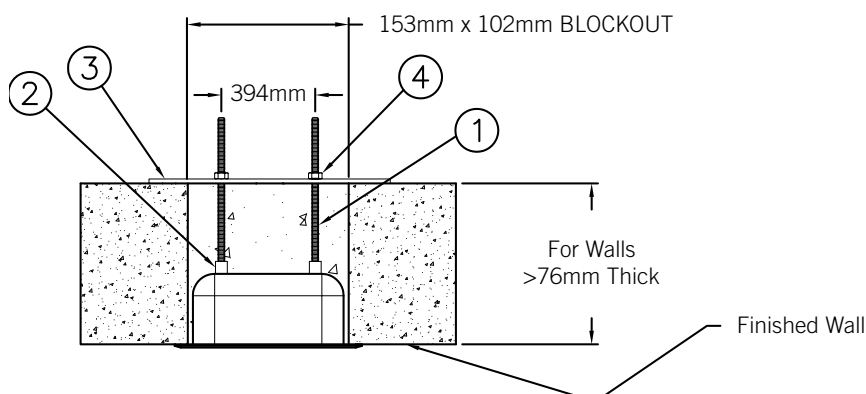
For Walls Less Than 76mm

1. Assemble inside threaded rods [1] onto the rear of the soap dish and position assembly in block-out.
2. While holding secure, assemble outside threaded rods from the rear side, [2] to back plate [3] and secure to soap dish with washers and nuts provided [4].
3. Turn threaded rods [2] by hand until wall is reached. Do not torque above 30Nm. Create tension by tightening the nuts on the inside rods [1] as shown.
4. If required, seal with anti-pick sealant [by others] to eliminate gaps between wall and fixtures.



For Walls Thicker Than 76mm

1. Connect the threaded rod [1] to the soap dish [2].
2. From fixture side of wall, slide soap dish [2] and rods [1] through wall block out.
3. On the rear side, install back plate [3] and tighten with hex nut [4] until secure.
4. If required, seal with anti-pick sealant [by others] to eliminate gaps between wall and fixtures.





While RBA takes all reasonable measures to ensure our ligature resistant products consistently perform as advertised, we do not perform load testing on every item. RBA strongly recommends all customers perform their own load testing on each item prior to installation and at regular intervals throughout the life of the product.

RBA does not offer or warrant any of our products as 'anti-ligature' as no product can be truly ligature-free. RBA will not be liable for any claims, losses or damage arising from ligature attachment to our products. It is the responsibility of the purchaser and installer to ensure supplied products are suitable for the environments they are to be installed into.

Note: This product should be installed, by suitably qualified persons, in a fit for purpose application, to suitable materials, using suitable fixings and comply with any relevant codes. It should be inspected periodically for signs of wear and tear that may affect performance or safety.

Dimensions are subject to manufacturer's tolerance of +/-10mm. Rough-in should be completed with each fixture.

Important: Installation Instructions are subject to change without notice. Please visit **our websites** for latest revision.