

## Model RBA1643-110

### Materials & Features

Manufactured from heavy duty brass with all exposed surfaces in bright chrome. äska is a suite of attractive commercial grade accessories with radiused corners and edges to increase comfort and minimise catch.



### Technical Detail

Material: Heavy Duty Brass  
 Finish: Bright Chrome  
 Bracket: Heavy Duty Brass Lug  
 Fixings: Included

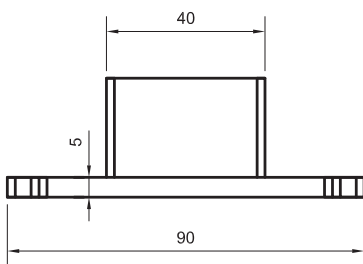
### Available Model

RBA1643-110

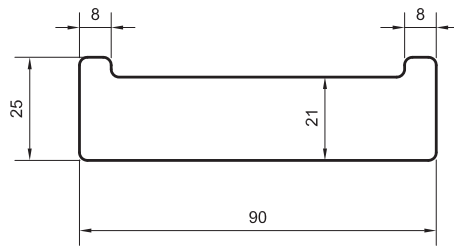
äska Double Robe Hook

**Important:** Installation instructions and current rough-in details should be furnished with each fixture. Do not rough in without certified dimensions. Dimensions are subject to manufacturer's tolerance of +/-10mm.

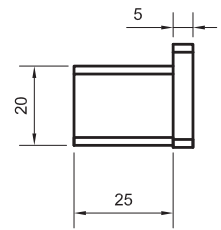
\*All dimensions in mm



PLAN VIEW



FRONT VIEW



SIDE VIEW



Global-Mark.com.au®  
 Sourced/ Supplied under OMS

As improvements in the design and performance of RBA products are continuous, specifications may be subject to change without notice. The illustrations and descriptions herein are applicable to production as of the date of this Technical Data Sheet. Revised 04/21 © 2021 by RBA Group TD/Model RBA1643-110/0421



### äska Robe Hook

20mm[W] x 65mm[H] x 30mm[D]

**RBA1643-100**



### äska Double Robe Hook

90mm[W] x 25mm[H] x 30mm[D]

**RBA1643-110**



### äska Toilet Roll Holder #1

138mm[W] x 22mm[H] x 95mm[D]

**RBA1643-102**



### äska Toilet Roll Holder #2

165mm[W] x 25mm[H] x 60mm[D]

**RBA1643-112**



### äska Towel Loop

200mm[W] x 22mm[H] x 105mm[D]

**RBA1643-103**



### äska Double Toilet Roll Holder

290mm[W] x 25mm[H] x 60mm[D]

**RBA1643-122**



### ända Soap Dish

110mm[W] x 38mm[H] x 110mm[D]

**RBA1622-101**



### ända Toilet Roll Holder w/ Phone Shelf

140mm [W] x 81mm[H] x 74mm[D]

**RBA1622-105**



### äska Towel Rail #1

600mm[W] x 22mm[H] x 50mm[D]

**RBA1643-104**



### äska Towel Rail #2

600mm[W] x 22mm[H] x 100mm[D]

**RBA1643-114**